


Product datasheet

FITC Anti-CD3 epsilon antibody [OKT3] ab210316

1 Image

Overview

Product name	FITC Anti-CD3 epsilon antibody [OKT3]
Description	FITC Mouse monoclonal [OKT3] to CD3 epsilon
Host species	Mouse
Conjugation	FITC. Ex: 493nm, Em: 528nm
Tested applications	Suitable for: Flow Cyt
Species reactivity	Reacts with: Human Predicted to work with: Chimpanzee 
Positive control	Human peripheral blood lymphocyte
General notes	<p>ab210316 is a widely used phenotypic marker for Human T cells. In addition, as the CD3 epsilon subunit of the TCR complex contains intracellular signaling domains, binding of ab210315 to CD3 epsilon can induce cell activation.</p> <p>The Life Science industry has been in the grips of a reproducibility crisis for a number of years. Abcam is leading the way in addressing this with our range of recombinant monoclonal antibodies and knockout edited cell lines for gold-standard validation. Please check that this product meets your needs before purchasing.</p> <p>If you have any questions, special requirements or concerns, please send us an inquiry and/or contact our Support team ahead of purchase. Recommended alternatives for this product can be found below, along with publications, customer reviews and Q&As</p>

Properties

Form	Liquid
Storage instructions	Shipped at 4°C. Store at +4°C. Do Not Freeze. Store In the Dark. Store undiluted.
Storage buffer	pH: 7.20 Preservative: 0.09% Sodium azide Constituents: 0.16% Monobasic dihydrogen sodium phosphate, 0.1% Gelatin, 0.87% Sodium chloride
Purity	Affinity purified
Purification notes	Purified from tissue culture supernatant.
Clonality	Monoclonal

Clone number	OKT3
Isotype	IgG2a
Light chain type	kappa

Applications

The Abpromise guarantee Our **Abpromise guarantee** covers the use of ab210316 in the following tested applications. The application notes include recommended starting dilutions; optimal dilutions/concentrations should be determined by the end user.

Application	Abreviews	Notes
Flow Cyt		Use at an assay dependent concentration. Use 5 μ L (1 μ g)

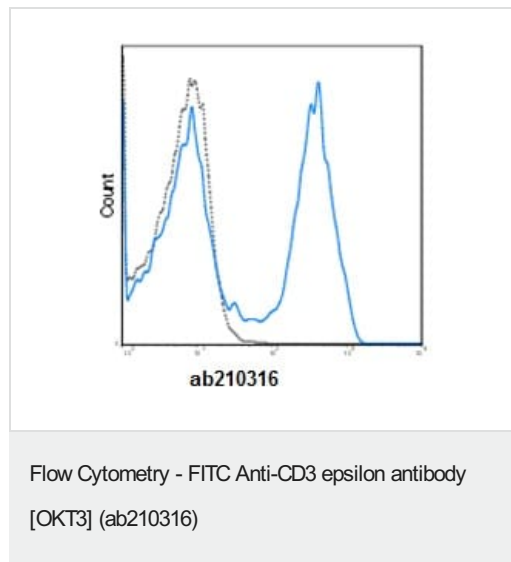
Target

Function The CD3 complex mediates signal transduction.

Sequence similarities Contains 1 Ig-like (immunoglobulin-like) domain.
Contains 1 ITAM domain.

Cellular localization Membrane.

Images



Flow cytometric analysis of Human peripheral blood lymphocyte labeling CD3 epsilon using 5 μ L (1 μ g) of ab210316 (solid line) and 1 μ g of FITC Mouse IgG2a control (dashed line).

Please note: All products are "FOR RESEARCH USE ONLY. NOT FOR USE IN DIAGNOSTIC PROCEDURES"

Our Abpromise to you: Quality guaranteed and expert technical support

- Replacement or refund for products not performing as stated on the datasheet
- Valid for 12 months from date of delivery

- Response to your inquiry within 24 hours
- We provide support in Chinese, English, French, German, Japanese and Spanish
- Extensive multi-media technical resources to help you
- We investigate all quality concerns to ensure our products perform to the highest standards

If the product does not perform as described on this datasheet, we will offer a refund or replacement. For full details of the Abpromise, please visit <https://www.abcam.com/abpromise> or contact our technical team.

Terms and conditions

- Guarantee only valid for products bought direct from Abcam or one of our authorized distributors