

Product datasheet

FITC Anti-CD32 antibody [FUN-2] ab134384

[1 Image](#)

Overview

Product name	FITC Anti-CD32 antibody [FUN-2]
Description	FITC Mouse monoclonal [FUN-2] to CD32
Host species	Mouse
Conjugation	FITC. Ex: 493nm, Em: 528nm
Tested applications	Suitable for: Flow Cyt
Species reactivity	Reacts with: Human
Immunogen	Tissue, cells or virus corresponding to Human CD32. Burkitt lymphoma cell line (called "Kobayashi")
Positive control	Human monocytes, Human granulocytes, Human B cells, Human platelets
General notes	<p>The Life Science industry has been in the grips of a reproducibility crisis for a number of years. Abcam is leading the way in addressing this with our range of recombinant monoclonal antibodies and knockout edited cell lines for gold-standard validation. Please check that this product meets your needs before purchasing.</p> <p>If you have any questions, special requirements or concerns, please send us an inquiry and/or contact our Support team ahead of purchase. Recommended alternatives for this product can be found below, along with publications, customer reviews and Q&As</p>

Properties

Form	Liquid
Storage instructions	Shipped at 4°C. Store at +4°C.
Storage buffer	<p>pH: 7.20</p> <p>Preservative: 0.09% Sodium azide</p> <p>Constituents: 98% PBS, 0.2% BSA</p>
Purity	Protein A purified
Purification notes	ab134384 is 95% pure and free of unconjugated FITC.
Clonality	Monoclonal
Clone number	FUN-2
Isotype	IgG2b
Light chain type	kappa

Applications

The Abpromise guarantee

Our **Abpromise guarantee** covers the use of ab134384 in the following tested applications.

The application notes include recommended starting dilutions; optimal dilutions/concentrations should be determined by the end user.

Application	Abreviews	Notes
Flow Cyt		Use 5-20µl for 10 ⁶ cells. in 100 µl staining volume. Or use 100 µl of whole blood. ab134384 Mouse monoclonal IgG2b is suitable for use as an

Target

Function

Binds to the Fc region of immunoglobulins gamma. Low affinity receptor. By binding to IgG it initiates cellular responses against pathogens and soluble antigens.

Tissue specificity

Found on monocytes, neutrophils and eosinophil platelets.

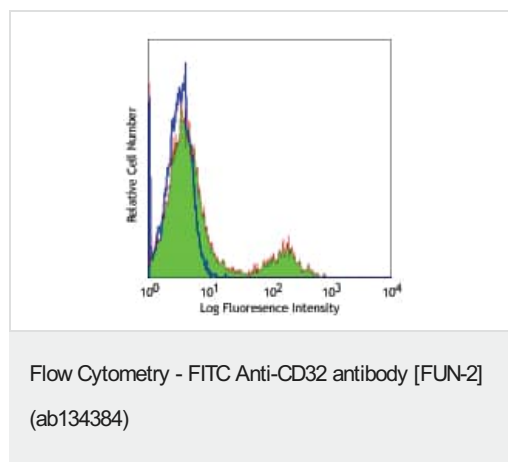
Sequence similarities

Contains 2 Ig-like C2-type (immunoglobulin-like) domains.

Cellular localization

Cell membrane.

Images



Flow cytometry of Human peripheral blood lymphocytes labelling CD32 with ab134384.

Please note: All products are "FOR RESEARCH USE ONLY. NOT FOR USE IN DIAGNOSTIC PROCEDURES"

Our Abpromise to you: Quality guaranteed and expert technical support

- Replacement or refund for products not performing as stated on the datasheet
- Valid for 12 months from date of delivery

- Response to your inquiry within 24 hours
- We provide support in Chinese, English, French, German, Japanese and Spanish
- Extensive multi-media technical resources to help you
- We investigate all quality concerns to ensure our products perform to the highest standards

If the product does not perform as described on this datasheet, we will offer a refund or replacement. For full details of the Abpromise, please visit <https://www.abcam.com/abpromise> or contact our technical team.

Terms and conditions

- Guarantee only valid for products bought direct from Abcam or one of our authorized distributors