

FITC Anti-CD43 antibody [MEM-59] ab21853

[1 Abreviews](#) [2 References](#) [2 Images](#)

Overview

Product name	FITC Anti-CD43 antibody [MEM-59]
Description	FITC Mouse monoclonal [MEM-59] to CD43
Host species	Mouse
Conjugation	FITC. Ex: 493nm, Em: 528nm
Tested applications	Suitable for: Flow Cyt
Species reactivity	Reacts with: Human
Immunogen	Tissue, cells or virus corresponding to Human CD43. T lymphocytes
General notes	<p>The purified antibody is conjugated with Fluorescein isothiocyanate (FITC) under optimum conditions. The reagent is free of unconjugated FITC and adjusted for direct use.</p> <p>The Life Science industry has been in the grips of a reproducibility crisis for a number of years. Abcam is leading the way in addressing this with our range of recombinant monoclonal antibodies and knockout edited cell lines for gold-standard validation. Please check that this product meets your needs before purchasing.</p> <p>If you have any questions, special requirements or concerns, please send us an inquiry and/or contact our Support team ahead of purchase. Recommended alternatives for this product can be found below, along with publications, customer reviews and Q&As</p>

Properties

Form	Liquid
Storage instructions	Shipped at 4°C. Store at +4°C.
Storage buffer	<p>pH: 7.40</p> <p>Preservative: 0.097% Sodium azide</p> <p>Constituents: PBS, BSA</p>
Purity	Protein G purified
Clonality	Monoclonal
Clone number	MEM-59
Isotype	IgG1

Applications

Applications

The Abpromise guarantee

Our **Abpromise guarantee** covers the use of ab21853 in the following tested applications.

The application notes include recommended starting dilutions; optimal dilutions/concentrations should be determined by the end user.

Application	Abreviews	Notes
Flow Cyt		Use 1µl for 10 ⁶ cells. ab91356 - Mouse monoclonal IgG1, is suitable for use as an isotype control with this antibody.

Target

Function

One of the major glycoproteins of thymocytes and T lymphocytes. Plays a role in the physicochemical properties of the T-cell surface and in lectin binding. Presents carbohydrate ligands to selectins. Has an extended rodlike structure that could protrude above the glycocalyx of the cell and allow multiple glycan chains to be accessible for binding. Is a counter receptor for SN/Siglec-1 (By similarity). During T-cell activation is actively removed from the T-cell-APC (antigen-presenting cell) contact site thus suggesting a negative regulatory role in adaptive immune response.

Tissue specificity

Cell surface of thymocytes, T-lymphocytes, neutrophils, plasma cells and myelomas.

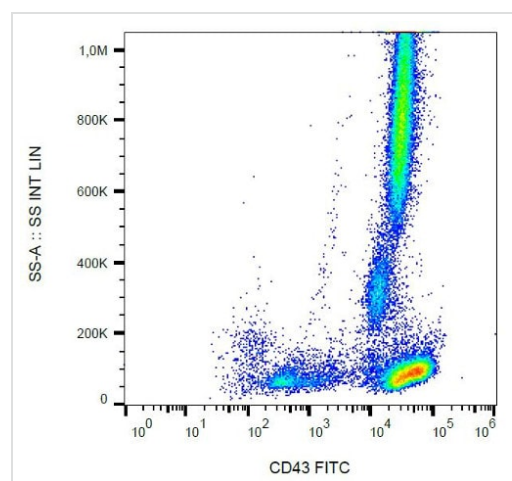
Post-translational modifications

Glycosylated; has a high content of sialic acid and O-linked carbohydrate structures.

Cellular localization

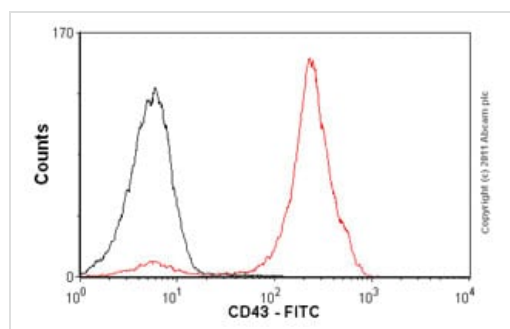
Membrane.

Images



Flow Cytometry analysis of human peripheral blood cells labeling CD43 with Anti-CD43 antibody [MEM-59] (FITC) (ab21853).

Flow Cytometry - FITC Anti-CD43 antibody [MEM-59] (ab21853)



Flow Cytometry - FITC Anti-CD43 antibody [MEM-59] (ab21853)

Overlay histogram showing peripheral blood lymphocytes stained with ab21853 (red line). The cells incubated in 1x PBS / 10% normal goat serum / 0.3M glycine to block non-specific protein-protein interactions. The cells were then incubated with the antibody (ab21853, 0.5 μ g/ 1×10^6 cells) for 30 min at 22°C. Isotype control antibody (black line) was mouse IgG1 FITC (2 μ g/ 1×10^6 cells) for 30 min at 22°C. Acquisition of >5,000 events was performed.

Please note: All products are "FOR RESEARCH USE ONLY. NOT FOR USE IN DIAGNOSTIC PROCEDURES"

Our Abpromise to you: Quality guaranteed and expert technical support

- Replacement or refund for products not performing as stated on the datasheet
- Valid for 12 months from date of delivery
- Response to your inquiry within 24 hours
- We provide support in Chinese, English, French, German, Japanese and Spanish
- Extensive multi-media technical resources to help you
- We investigate all quality concerns to ensure our products perform to the highest standards

If the product does not perform as described on this datasheet, we will offer a refund or replacement. For full details of the Abpromise, please visit <https://www.abcam.com/abpromise> or contact our technical team.

Terms and conditions

- Guarantee only valid for products bought direct from Abcam or one of our authorized distributors