


Product datasheet

FITC Anti-CD55 antibody [MEM-118], prediluted ab28112

1 Image

Overview

Product name	FITC Anti-CD55 antibody [MEM-118], prediluted
Description	FITC Mouse monoclonal [MEM-118] to CD55, prediluted
Host species	Mouse
Conjugation	FITC. Ex: 493nm, Em: 528nm
Specificity	ab28112 recognizes an epitope in SCR4 domain of CD55 antigen (Decay accelerating factor).
Tested applications	Suitable for: Flow Cyt
Species reactivity	Reacts with: Human
	Predicted to work with: Non human primates 
Immunogen	Tissue, cells or virus corresponding to Human CD55. T cell line HPB-ALL
General notes	<p>The purified antibody is conjugated with Fluorescein isothiocyanate (FITC) under optimum conditions. The reagent is free of unconjugated FITC and adjusted for direct use.</p> <p>The Life Science industry has been in the grips of a reproducibility crisis for a number of years. Abcam is leading the way in addressing this with our range of recombinant monoclonal antibodies and knockout edited cell lines for gold-standard validation. Please check that this product meets your needs before purchasing.</p> <p>If you have any questions, special requirements or concerns, please send us an inquiry and/or contact our Support team ahead of purchase. Recommended alternatives for this product can be found below, along with publications, customer reviews and Q&As</p>

Properties

Form	Liquid
Storage instructions	Shipped at 4°C. Store at +4°C.
Storage buffer	pH: 8.0 Preservative: 0.097% Sodium azide Constituents: Tris buffered saline, 0.2% BSA
Purity	Purified IgM
Clonality	Monoclonal

Clone number	MEM-118
Isotype	IgM

Applications

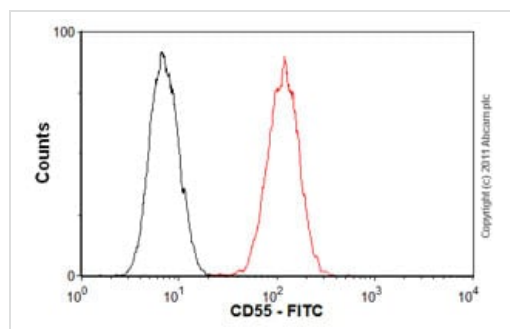
The Abpromise guarantee Our **Abpromise guarantee** covers the use of ab28112 in the following tested applications. The application notes include recommended starting dilutions; optimal dilutions/concentrations should be determined by the end user.

Application	Abreviews	Notes
Flow Cyt		Use 10µl for 10 ⁶ cells. ab91546 - Mouse monoclonal IgM, is suitable for use as an isotype control with this antibody.

Target

Function	This protein recognizes C4b and C3b fragments that condense with cell-surface hydroxyl or amino groups when nascent C4b and C3b are locally generated during C4 and c3 activation. Interaction of daf with cell-associated C4b and C3b polypeptides interferes with their ability to catalyze the conversion of C2 and factor B to enzymatically active C2a and Bb and thereby prevents the formation of C4b2a and C3bBb, the amplification convertases of the complement cascade.
Tissue specificity	Expressed on the plasma membranes of all cell types that are in intimate contact with plasma complement proteins. It is also found on the surfaces of epithelial cells lining extracellular compartments, and variants of the molecule are present in body fluids and in extracellular matrix.
Sequence similarities	Belongs to the receptors of complement activation (RCA) family. Contains 4 Sushi (CCP/SCR) domains.
Domain	The first Sushi domain (SCR1) is not necessary for function. SCR2 and SCR4 provide the proper conformation for the active site on SCR3.
Post-translational modifications	The Ser/Thr-rich domain is heavily O-glycosylated.
Cellular localization	Cell membrane.

Images



Flow Cytometry - FITC Anti-CD55 antibody [MEM-118], prediluted (ab28112)

Overlay histogram showing THP1 cells stained with ab28112 (red line). The cells were fixed with 80% methanol (5 min) and incubated in 1x PBS / 10% normal goat serum / 0.3M glycine to block non-specific protein-protein interactions followed by the antibody (ab28112, 10 μ l/1x10⁶ cells) for 30 min at 22°C. Isotype control antibody (black line) was mouse IgM (FITC) (ab91546, 10 μ l/1x10⁶ cells) used under the same conditions. Acquisition of >5,000 events was performed. This antibody gave a positive signal in THP1 cells fixed with 4% paraformaldehyde (10 min) used under the same conditions.

Please note that Abcam do not have any data for use of this antibody on non-fixed cells. We welcome any customer feedback.

Please note: All products are "FOR RESEARCH USE ONLY. NOT FOR USE IN DIAGNOSTIC PROCEDURES"

Our Abpromise to you: Quality guaranteed and expert technical support

- Replacement or refund for products not performing as stated on the datasheet
- Valid for 12 months from date of delivery
- Response to your inquiry within 24 hours
- We provide support in Chinese, English, French, German, Japanese and Spanish
- Extensive multi-media technical resources to help you
- We investigate all quality concerns to ensure our products perform to the highest standards

If the product does not perform as described on this datasheet, we will offer a refund or replacement. For full details of the Abpromise, please visit <https://www.abcam.com/abpromise> or contact our technical team.

Terms and conditions

- Guarantee only valid for products bought direct from Abcam or one of our authorized distributors