

FITC Anti-CD63 antibody [MEM-259] ab18235

[10 References](#) [1 Image](#)

Overview

| | |
|----------------------------|---|
| Product name | FITC Anti-CD63 antibody [MEM-259] |
| Description | FITC Mouse monoclonal [MEM-259] to CD63 |
| Host species | Mouse |
| Conjugation | FITC. Ex: 493nm, Em: 528nm |
| Tested applications | Suitable for: Flow Cyt |
| Species reactivity | Reacts with: Human |
| Immunogen | Tissue, cells or virus corresponding to Human CD63. T cell line HPB-ALL |
| General notes | <p>The purified antibody is conjugated with Fluorescein isothiocyanate (FITC) under optimum conditions. The reagent is free of unconjugated FITC and adjusted for direct use. No reconstitution is necessary.</p> <p>The Life Science industry has been in the grips of a reproducibility crisis for a number of years. Abcam is leading the way in addressing this with our range of recombinant monoclonal antibodies and knockout edited cell lines for gold-standard validation. Please check that this product meets your needs before purchasing.</p> <p>If you have any questions, special requirements or concerns, please send us an inquiry and/or contact our Support team ahead of purchase. Recommended alternatives for this product can be found below, along with publications, customer reviews and Q&As</p> |

Properties

| | |
|-----------------------------|--|
| Form | Liquid |
| Storage instructions | Shipped at 4°C. Store at +4°C. |
| Storage buffer | <p>pH: 7.40</p> <p>Preservative: 0.097% Sodium azide</p> <p>Constituents: PBS, BSA</p> |
| Clonality | Monoclonal |
| Clone number | MEM-259 |
| Isotype | IgG1 |

Applications

The Abpromise guarantee

Our **Abpromise guarantee** covers the use of ab18235 in the following tested applications.

The application notes include recommended starting dilutions; optimal dilutions/concentrations should be determined by the end user.

| Application | Abreviews | Notes |
|-------------|-----------|---|
| Flow Cyt | | 1/5. 20 µl for a 100 µl sample is recommended. ab91356 - Mouse monoclonal IgG1 - is suitable for use as an |

Target

Function

This antigen is associated with early stages of melanoma tumor progression. May play a role in growth regulation.

Tissue specificity

Dysplastic nevi, radial growth phase primary melanomas, hematopoietic cells, tissue macrophages.

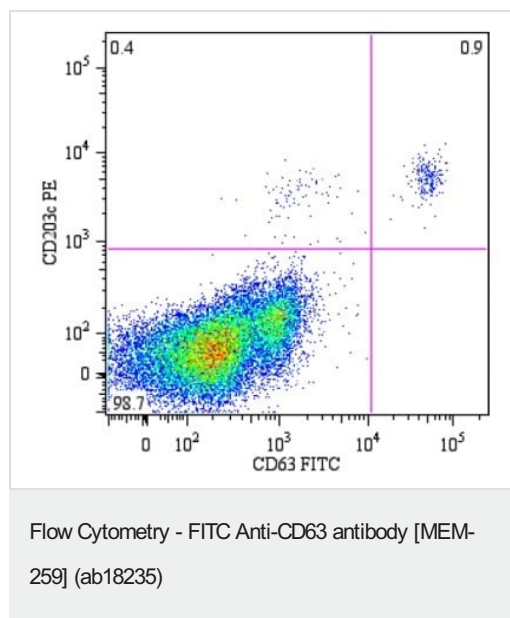
Sequence similarities

Belongs to the tetraspanin (TM4SF) family.

Cellular localization

Cell membrane. Lysosome membrane. Late endosome membrane. Also found in Weibel-Palade bodies of endothelial cells. Located in platelet dense granules.

Images



ab18235 staining CD63 in human peripheral blood lymphocytes from a patient with allergy to bee venom after stimulation with bee venom, analysed by Flow Cytometry.

Please note: All products are "FOR RESEARCH USE ONLY. NOT FOR USE IN DIAGNOSTIC PROCEDURES"

Our Abpromise to you: Quality guaranteed and expert technical support

- Replacement or refund for products not performing as stated on the datasheet
- Valid for 12 months from date of delivery
- Response to your inquiry within 24 hours
- We provide support in Chinese, English, French, German, Japanese and Spanish
- Extensive multi-media technical resources to help you
- We investigate all quality concerns to ensure our products perform to the highest standards

If the product does not perform as described on this datasheet, we will offer a refund or replacement. For full details of the Abpromise, please visit <https://www.abcam.com/abpromise> or contact our technical team.

Terms and conditions

- Guarantee only valid for products bought direct from Abcam or one of our authorized distributors