


## Product datasheet

# FITC Anti-CD8 alpha antibody [3-298] ab24910

1 Image

### Overview

---

<b>Product name</b>	FITC Anti-CD8 alpha antibody [3-298]
<b>Description</b>	FITC Mouse monoclonal [3-298] to CD8 alpha
<b>Host species</b>	Mouse
<b>Conjugation</b>	FITC. Ex: 493nm, Em: 528nm
<b>Specificity</b>	This antibody recognises CD8a.
<b>Tested applications</b>	<b>Suitable for:</b> Flow Cyt
<b>Species reactivity</b>	<b>Reacts with:</b> Chicken <b>Predicted to work with:</b> Turkey 
<b>Immunogen</b>	Tissue, cells or virus corresponding to CD8 alpha. Chicken thymocytes
<b>Positive control</b>	Flow Cyt: Chicken peripheral blood lymphocytes.
<b>General notes</b>	<p>In chicken, the CD8 molecule is present in two forms: (i) a homodimer of two alpha chains, and (ii) a heterodimer of an alpha chain and a beta chain. Chicken CD8 is expressed on approximately 80% of thymocytes, 45% of blood mononuclear cells and 50% of spleen cells, but &lt;1% of cells in the bursa and bone marrow. While the vast majority of CD8+ cells in the thymus, spleen, and blood of adult chickens express both CD8 alpha and CD8 beta chains, a relatively large proportion of the CD8+ TCR gamma delta cells in the spleens of embryos and young chicks express only the alpha chain of CD8. Among intestinal epithelial lymphocytes, the major CD8+ T cell populations present in mice are conserved, but there is a population of TCR gamma delta CD8 alpha beta cells in the chicken that is not found in rodents.</p>

### Properties

---

<b>Form</b>	Liquid
<b>Storage instructions</b>	Shipped at 4°C. Store at +4°C. Store In the Dark.
<b>Storage buffer</b>	pH: 7.4 Preservative: 0.1% Sodium azide Constituent: PBS
<b>Purity</b>	Affinity purified
<b>Primary antibody notes</b>	In chicken, the CD8 molecule is present in two forms: (i) a homodimer of two alpha chains, and (ii) a heterodimer of an alpha chain and a beta chain. Chicken CD8 is expressed on approximately

80% of thymocytes, 45% of blood mononuclear cells and 50% of spleen cells, but <1% of cells in the bursa and bone marrow. While the vast majority of CD8+ cells in the thymus, spleen, and blood of adult chickens express both CD8 alpha and CD8 beta chains, a relatively large proportion of the CD8+ TCR gamma delta cells in the spleens of embryos and young chicks express only the alpha chain of CD8. Among intestinal epithelial lymphocytes, the major CD8+ T cell populations present in mice are conserved, but there is a population of TCR gamma delta CD8 alpha beta cells in the chicken that is not found in rodents.

<b>Clonality</b>	Monoclonal
<b>Clone number</b>	3-298
<b>Isotype</b>	IgG2b
<b>Light chain type</b>	kappa

## Applications

**The Abpromise guarantee** Our **Abpromise guarantee** covers the use of ab24910 in the following tested applications.

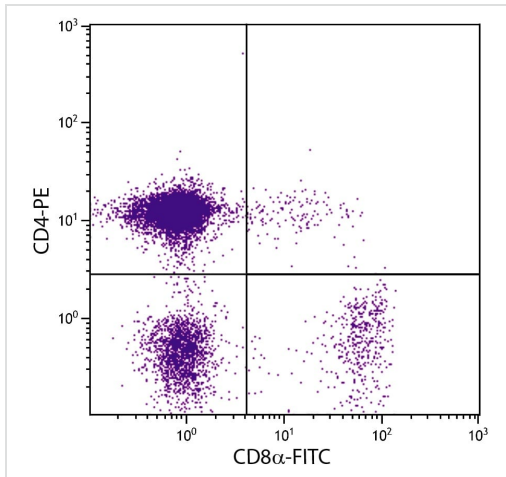
The application notes include recommended starting dilutions; optimal dilutions/concentrations should be determined by the end user.

Application	Abreviews	Notes
Flow Cyt		Use at an assay dependent concentration.

## Target

<b>Function</b>	Identifies cytotoxic/suppressor T-cells that interact with MHC class I bearing targets. CD8 is thought to play a role in the process of T-cell mediated killing. CD8 alpha chains binds to class I MHC molecules alpha-3 domains.
<b>Involvement in disease</b>	Defects in CD8A are a cause of familial CD8 deficiency (CD8 deficiency) [MIM:608957]. Familial CD8 deficiency is a novel autosomal recessive immunologic defect characterized by absence of CD8+ cells, leading to recurrent bacterial infections.
<b>Sequence similarities</b>	Contains 1 Ig-like V-type (immunoglobulin-like) domain.
<b>Post-translational modifications</b>	All of the five most carboxyl-terminal cysteines form inter-chain disulfide bonds in dimers and higher multimers, while the four N-terminal cysteines do not.
<b>Cellular localization</b>	Secreted and Cell membrane.

## Images



Flow Cytometry - Anti-CD8 alpha antibody [3-298] (FITC) (ab24910)

Chicken peripheral blood lymphocytes were costained using CD8 alpha-FITC and CD4-PE to distinguish cell subpopulations. Cells were incubated with anti-CD8 alpha antibody [3-298] (FITC) (ab24910) at  $1 \mu\text{g}/10^6$  cells.

**Please note:** All products are "FOR RESEARCH USE ONLY. NOT FOR USE IN DIAGNOSTIC PROCEDURES"

### Our Abpromise to you: Quality guaranteed and expert technical support

- Replacement or refund for products not performing as stated on the datasheet
- Valid for 12 months from date of delivery
- Response to your inquiry within 24 hours
- We provide support in Chinese, English, French, German, Japanese and Spanish
- Extensive multi-media technical resources to help you
- We investigate all quality concerns to ensure our products perform to the highest standards

If the product does not perform as described on this datasheet, we will offer a refund or replacement. For full details of the Abpromise, please visit <https://www.abcam.com/abpromise> or contact our technical team.

### Terms and conditions

- Guarantee only valid for products bought direct from Abcam or one of our authorized distributors