



## Product datasheet

### FITC Anti-EPCR/CD201 antibody [016] ab275630

Recombinant

2 Images

#### Overview

<b>Product name</b>	FITC Anti-EPCR/CD201 antibody [016]
<b>Description</b>	FITC Rabbit monoclonal [016] to EPCR/CD201
<b>Host species</b>	Rabbit
<b>Conjugation</b>	FITC. Ex: 493nm, Em: 528nm
<b>Tested applications</b>	<b>Suitable for:</b> Flow Cyt
<b>Species reactivity</b>	<b>Reacts with:</b> Mouse
<b>Immunogen</b>	Recombinant fragment (His-tag) corresponding to Mouse EPCR/CD201 aa 1 to the C-terminus (extracellular). Including signal peptide. Database link: <a href="#">Q64695</a>
	 <a href="#">Run BLAST with</a>  <a href="#">Run BLAST with</a>
<b>Positive control</b>	Flow Cyt: bEnd.3 cells.

#### Properties

<b>Form</b>	Liquid
<b>Storage instructions</b>	Shipped at 4°C. Store at +4°C. Do Not Freeze. Store In the Dark.
<b>Storage buffer</b>	Preservative: 0.09% Sodium azide Constituent: 0.5% BSA
<b>Purity</b>	Protein A purified
<b>Clonality</b>	Monoclonal
<b>Clone number</b>	016
<b>Isotype</b>	IgG

#### Applications

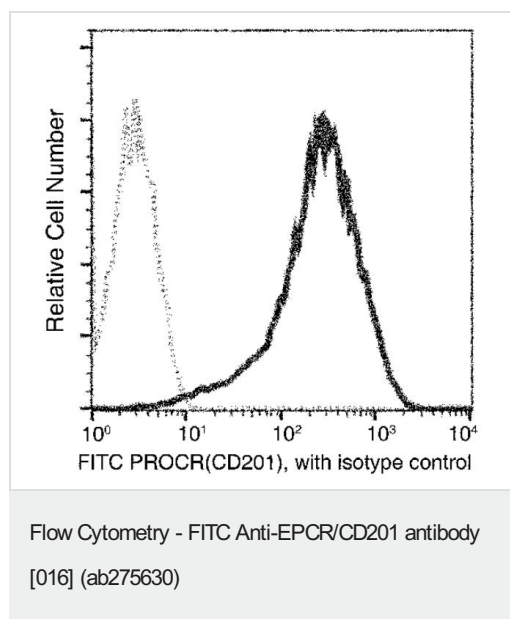
**The Abpromise guarantee** Our [Abpromise guarantee](#) covers the use of ab275630 in the following tested applications.  
The application notes include recommended starting dilutions; optimal dilutions/concentrations should be determined by the end user.

Application	Abreviews	Notes
Flow Cyt		Use at an assay dependent concentration. 5 µl/Test

## Target

<b>Function</b>	Binds activated protein C. Enhances protein C activation by the thrombin-thrombomodulin complex; plays a role in the protein C pathway controlling blood coagulation.
<b>Tissue specificity</b>	Expressed strongly in the endothelial cells of arteries and veins in heart and lung, less intensely in capillaries in the lung and skin, and not at all in the endothelium of small vessels of the liver and kidney.
<b>Post-translational modifications</b>	N-glycosylated. A soluble form exists; probably released by a metalloprotease. Seems to have the same activity as the membrane-bound form.
<b>Cellular localization</b>	Membrane.

## Images



Flow cytometric analysis of bEnd.3 (mouse brain endothelialpolyoma middle T antigen transformed cell line) cells labeling EPCR/CD201 with ab275630 at 5 µl/Test (black) compared with isotype control (Grey). The fluorescence histograms were derived from gated events with the forward and side light-scatter characteristics of intact cells.

### Why choose a recombinant antibody?



**Research with confidence**  
Consistent and reproducible results



**Long-term and scalable supply**  
Recombinant technology



**Success from the first experiment**  
Confirmed specificity



**Ethical standards compliant**  
Animal-free production

FITC Anti-EPCR/CD201 antibody [016] (ab275630)

**Please note:** All products are "FOR RESEARCH USE ONLY. NOT FOR USE IN DIAGNOSTIC PROCEDURES"

### Our Abpromise to you: Quality guaranteed and expert technical support

---

- Replacement or refund for products not performing as stated on the datasheet
- Valid for 12 months from date of delivery
- Response to your inquiry within 24 hours
- We provide support in Chinese, English, French, German, Japanese and Spanish
- Extensive multi-media technical resources to help you
- We investigate all quality concerns to ensure our products perform to the highest standards

If the product does not perform as described on this datasheet, we will offer a refund or replacement. For full details of the Abpromise, please visit <https://www.abcam.com/abpromise> or contact our technical team.

### Terms and conditions

---

- Guarantee only valid for products bought direct from Abcam or one of our authorized distributors