


# FITC Anti-FOXP3 antibody [3G3] ab210230

1 Image

### Overview

<b>Product name</b>	FITC Anti-FOXP3 antibody [3G3]
<b>Description</b>	FITC Mouse monoclonal [3G3] to FOXP3
<b>Host species</b>	Mouse
<b>Conjugation</b>	FITC. Ex: 493nm, Em: 528nm
<b>Tested applications</b>	<b>Suitable for:</b> Flow Cyt (Intra)
<b>Species reactivity</b>	<b>Reacts with:</b> Mouse <b>Predicted to work with:</b> Rhesus monkey 
<b>Immunogen</b>	The details of the immunogen for this antibody are not available.
<b>Positive control</b>	Flow Cyt (Intra): Mouse spleen cells (C57Bl/6 splenocytes)
<b>General notes</b>	<p>The Life Science industry has been in the grips of a reproducibility crisis for a number of years. Abcam is leading the way in addressing this with our range of recombinant monoclonal antibodies and knockout edited cell lines for gold-standard validation. Please check that this product meets your needs before purchasing.</p> <p>If you have any questions, special requirements or concerns, please send us an inquiry and/or contact our Support team ahead of purchase. Recommended alternatives for this product can be found below, along with publications, customer reviews and Q&amp;As</p>

### Properties

<b>Form</b>	Liquid
<b>Storage instructions</b>	Shipped at 4°C. Store at +4°C. Do Not Freeze. Store In the Dark.
<b>Storage buffer</b>	pH: 8.00 Preservative: 0.05% Sodium azide Constituents: 0.87% Sodium chloride, 0.05% BSA, 0.12% Tris
<b>Purity</b>	Affinity purified
<b>Purification notes</b>	ab210230 was purified from tissue culture supernatant via affinity chromatography. The purified antibody was conjugated under optimal conditions, with unreacted dye removed from the preparation
<b>Clonality</b>	Monoclonal
<b>Clone number</b>	3G3

<b>Isotype</b>	IgG1
<b>Light chain type</b>	kappa

## Applications

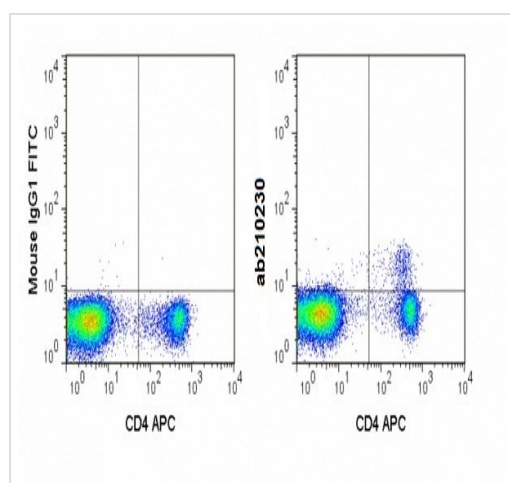
**The Abpromise guarantee** Our **Abpromise guarantee** covers the use of ab210230 in the following tested applications. The application notes include recommended starting dilutions; optimal dilutions/concentrations should be determined by the end user.

Application	Abreviews	Notes
Flow Cyt (Intra)		Use at an assay dependent concentration.

## Target

<b>Function</b>	Probable transcription factor. Plays a critical role in the control of immune response.
<b>Involvement in disease</b>	Defects in FOXP3 are the cause of immunodeficiency polyendocrinopathy, enteropathy, X-linked syndrome (IPEX) [MIM:304790]; also known as X-linked autoimmunity-immunodeficiency syndrome. IPEX is characterized by neonatal onset insulin-dependent diabetes mellitus, infections, secretory diarrhea, trombocytopenia, anemia and eczema. It is usually lethal in infancy.
<b>Sequence similarities</b>	Contains 1 C2H2-type zinc finger. Contains 1 fork-head DNA-binding domain.
<b>Cellular localization</b>	Nucleus.

## Images



Intracellular flow cytometric analysis of Mouse C57Bl/6 splenocytes stained with APC Anti-Mouse CD4, followed by intracellular labeling of Foxp3 with ab210230 at 0.015 ug/test (right panel) or FITC Mouse IgG1 isotype control at 0.015 ug/test (left panel).

Flow Cytometry (Intracellular) - FITC Anti-FOXP3 antibody [3G3] (ab210230)

**Please note:** All products are "FOR RESEARCH USE ONLY. NOT FOR USE IN DIAGNOSTIC PROCEDURES"

## **Our Abpromise to you: Quality guaranteed and expert technical support**

---

- Replacement or refund for products not performing as stated on the datasheet
- Valid for 12 months from date of delivery
- Response to your inquiry within 24 hours
  
- We provide support in Chinese, English, French, German, Japanese and Spanish
- Extensive multi-media technical resources to help you
- We investigate all quality concerns to ensure our products perform to the highest standards

If the product does not perform as described on this datasheet, we will offer a refund or replacement. For full details of the Abpromise, please visit <https://www.abcam.com/abpromise> or contact our technical team.

## **Terms and conditions**

---

- Guarantee only valid for products bought direct from Abcam or one of our authorized distributors