

Product datasheet

FITC Anti-HLA B7 antibody [BB7.1] ab33330

1 Image

Overview

Product name	FITC Anti-HLA B7 antibody [BB7.1]
Description	FITC Mouse monoclonal [BB7.1] to HLA B7
Host species	Mouse
Conjugation	FITC. Ex: 493nm, Em: 528nm
Specificity	This antibody recognizes the HLA B7 antigen and does not cross react with HLA B27 or other related antigens.
Tested applications	Suitable for: Flow Cyt
Species reactivity	Reacts with: Human, Cynomolgus monkey
Immunogen	Full length protein corresponding to Human HLA B7. Papain solubilized HLA-B7 antigen
General notes	<p>This antibody can be used to distinguish true HLA B27 positives from false HLA B27 positives (i.e. HLA B7 positive) in the investigation of diseases such as ankylosing spondylitis and anterior uveitis.</p> <p>The Life Science industry has been in the grips of a reproducibility crisis for a number of years. Abcam is leading the way in addressing this with our range of recombinant monoclonal antibodies and knockout edited cell lines for gold-standard validation. Please check that this product meets your needs before purchasing.</p> <p>If you have any questions, special requirements or concerns, please send us an inquiry and/or contact our Support team ahead of purchase. Recommended alternatives for this product can be found below, along with publications, customer reviews and Q&As</p>

Properties

Form	Liquid
Storage instructions	Shipped at 4°C. Store at +4°C.
Storage buffer	pH: 7.40 Preservative: 0.09% Sodium azide Constituents: PBS, 1% BSA
Purity	Protein G purified
Purification notes	This antibody was purified from tissue culture supernatant.

Primary antibody notes

This antibody can be used to distinguish true HLA B27 positives from false HLA B27 positives (i.e. HLA B7 positive) in the investigation of diseases such as ankylosing spondylitis and anterior uveitis.

Clonality

Monoclonal

Clone number

BB7.1

Isotype

IgG1

Applications

The Abpromise guarantee

Our **Abpromise guarantee** covers the use of ab33330 in the following tested applications.

The application notes include recommended starting dilutions; optimal dilutions/concentrations should be determined by the end user.

Application	Abreviews	Notes
Flow Cyt		1/1 - 1/10. Use 10µl of the suggested working dilution to label 10 ⁶ cells or 100µl whole blood.

Target

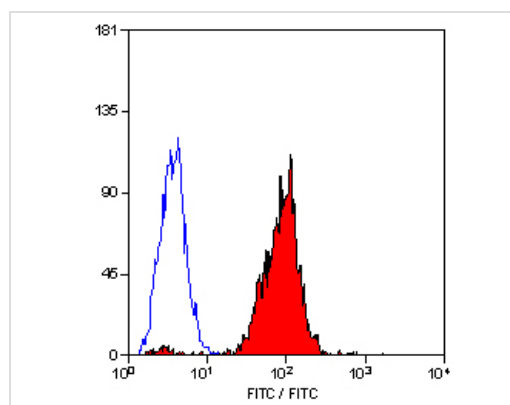
Relevance

HLA B belongs to the HLA class I heavy chain paralogues. This class I molecule is a heterodimer consisting of a heavy chain and a light chain (beta 2 microglobulin). The heavy chain is anchored in the membrane. Class I molecules play a central role in the immune system by presenting peptides derived from the endoplasmic reticulum lumen. They are expressed in nearly all cells. The heavy chain is approximately 45 kDa. Hundreds of HLA B alleles have been described.

Cellular localization

Cell Membrane, single pass type I membrane protein.

Images



Staining of human peripheral blood lymphocytes with ab33330

Flow Cytometry - FITC Anti-HLA B7 antibody

[BB7.1] (ab33330)

Please note: All products are "FOR RESEARCH USE ONLY. NOT FOR USE IN DIAGNOSTIC PROCEDURES"

Our Abpromise to you: Quality guaranteed and expert technical support

- Replacement or refund for products not performing as stated on the datasheet
- Valid for 12 months from date of delivery
- Response to your inquiry within 24 hours
- We provide support in Chinese, English, French, German, Japanese and Spanish
- Extensive multi-media technical resources to help you
- We investigate all quality concerns to ensure our products perform to the highest standards

If the product does not perform as described on this datasheet, we will offer a refund or replacement. For full details of the Abpromise, please visit <https://www.abcam.com/abpromise> or contact our technical team.

Terms and conditions

- Guarantee only valid for products bought direct from Abcam or one of our authorized distributors