

FITC Anti-Integrin alpha 2 antibody [AK7] ab30486

[4 References](#) [1 Image](#)

Overview

Product name	FITC Anti-Integrin alpha 2 antibody [AK7]
Description	FITC Mouse monoclonal [AK7] to Integrin alpha 2
Host species	Mouse
Conjugation	FITC. Ex: 493nm, Em: 528nm
Specificity	ab30486 recognises the integrin alpha 2 subunit, which is a 160kD glycoprotein that non covalently associates with the 130kD integrin beta 1 subunit (CD29) to form the VLA2 complex.
Tested applications	Suitable for: Flow Cyt
Species reactivity	Reacts with: Human, Monkey
Immunogen	The details of the immunogen for this antibody are not available.
General notes	<p>The Life Science industry has been in the grips of a reproducibility crisis for a number of years. Abcam is leading the way in addressing this with our range of recombinant monoclonal antibodies and knockout edited cell lines for gold-standard validation. Please check that this product meets your needs before purchasing.</p> <p>If you have any questions, special requirements or concerns, please send us an inquiry and/or contact our Support team ahead of purchase. Recommended alternatives for this product can be found below, along with publications, customer reviews and Q&As</p>

Properties

Form	Liquid
Storage instructions	Shipped at 4°C. Store at +4°C.
Storage buffer	<p>pH: 7.40</p> <p>Preservative: 0.09% Sodium azide</p> <p>Constituents: PBS, 1% BSA</p>
Purity	Protein G purified
Clonality	Monoclonal
Clone number	AK7
Myeloma	NS1
Isotype	IgG1

Applications

The Abpromise guarantee

Our **Abpromise guarantee** covers the use of ab30486 in the following tested applications.

The application notes include recommended starting dilutions; optimal dilutions/concentrations should be determined by the end user.

Application	Abreviews	Notes
Flow Cyt		

Application notes

Flow Cyt: 1/Neat - 1/5. Use 10µl of the working dilution for 10⁶ cells or 100ul whole blood.

Not yet tested in other applications.

Optimal dilutions/concentrations should be determined by the end user.

Target

Function

Integrin alpha-2/beta-1 is a receptor for laminin, collagen, collagen C-propeptides, fibronectin and E-cadherin. It recognizes the proline-hydroxylated sequence G-F-P-G-E-R in collagen. It is responsible for adhesion of platelets and other cells to collagens, modulation of collagen and collagenase gene expression, force generation and organization of newly synthesized extracellular matrix.

Sequence similarities

Belongs to the integrin alpha chain family.

Contains 7 FG-GAP repeats.

Contains 1 VWFA domain.

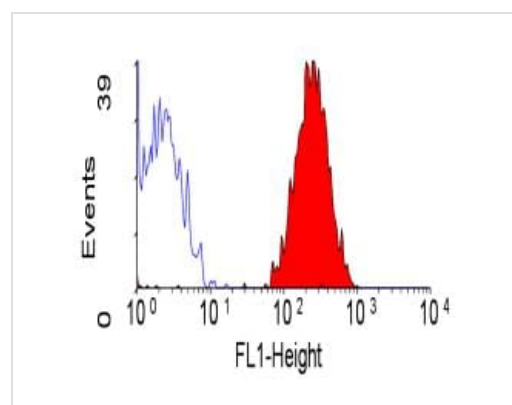
Domain

The integrin I-domain (insert) is a VWFA domain. Integrins with I-domains do not undergo protease cleavage.

Cellular localization

Membrane.

Images



Flow Cytometry - FITC Anti-Integrin alpha 2 antibody
[AK7] (ab30486)

Flow cytometric analysis of human peripheral blood platelets with 10µl for 10⁶ cells of anti human CD49b FITC conjugated (ab30486).

Please note: All products are "FOR RESEARCH USE ONLY. NOT FOR USE IN DIAGNOSTIC PROCEDURES"

Our Abpromise to you: Quality guaranteed and expert technical support

- Replacement or refund for products not performing as stated on the datasheet
- Valid for 12 months from date of delivery
- Response to your inquiry within 24 hours

- We provide support in Chinese, English, French, German, Japanese and Spanish
- Extensive multi-media technical resources to help you
- We investigate all quality concerns to ensure our products perform to the highest standards

If the product does not perform as described on this datasheet, we will offer a refund or replacement. For full details of the Abpromise, please visit <https://www.abcam.com/abpromise> or contact our technical team.

Terms and conditions

- Guarantee only valid for products bought direct from Abcam or one of our authorized distributors