

# FITC Anti-Integrin beta 4 antibody [450-9D] ab22486

[3 References](#) [1 Image](#)

### Overview

<b>Product name</b>	FITC Anti-Integrin beta 4 antibody [450-9D]
<b>Description</b>	FITC Mouse monoclonal [450-9D] to Integrin beta 4
<b>Host species</b>	Mouse
<b>Conjugation</b>	FITC. Ex: 493nm, Em: 528nm
<b>Specificity</b>	ab22486 recognises the integrin beta 4 expressed on epithelial cells, Schwann cells and various tumour cell lines.
<b>Tested applications</b>	<b>Suitable for:</b> IHC-Fr
<b>Species reactivity</b>	<b>Reacts with:</b> Human
<b>Immunogen</b>	Full length native protein (purified) (Human): Purified a6b4 integrin from A431 cells
<b>Epitope</b>	the epitope is in the extracellular region of Integrin beta 4
<b>Positive control</b>	Human tonsil
<b>General notes</b>	<p>The Life Science industry has been in the grips of a reproducibility crisis for a number of years. Abcam is leading the way in addressing this with our range of recombinant monoclonal antibodies and knockout edited cell lines for gold-standard validation. Please check that this product meets your needs before purchasing.</p> <p>If you have any questions, special requirements or concerns, please send us an inquiry and/or contact our Support team ahead of purchase. Recommended alternatives for this product can be found below, along with publications, customer reviews and Q&amp;As</p>

### Properties

<b>Form</b>	Liquid
<b>Storage instructions</b>	Shipped at 4°C. Store at +4°C short term (1-2 weeks). Upon delivery aliquot. Store at -20°C or -80°C. Avoid freeze / thaw cycle.
<b>Storage buffer</b>	<p>pH: 7.40</p> <p>Preservative: 0.1% Sodium azide</p> <p>Constituents: PBS, 1% BSA</p>
<b>Purity</b>	Protein G purified
<b>Purification notes</b>	ab22486 has been purified by affinity chromatography on Protein G from tissue culture supernatant.

<b>Clonality</b>	Monoclonal
<b>Clone number</b>	450-9D
<b>Myeloma</b>	Sp2/0
<b>Isotype</b>	IgG1

## Applications

**The Abpromise guarantee** Our **Abpromise guarantee** covers the use of ab22486 in the following tested applications.

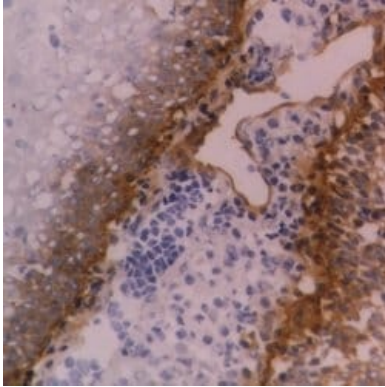
The application notes include recommended starting dilutions; optimal dilutions/concentrations should be determined by the end user.

Application	Abreviews	Notes
IHC-Fr		Use at an assay dependent concentration.

## Target

<b>Function</b>	Integrin alpha-6/beta-4 is a receptor for laminin. It plays a critical structural role in the hemidesmosome of epithelial cells.
<b>Tissue specificity</b>	Integrin alpha-6/beta-4 is predominantly expressed by epithelia. Isoform beta-4D is also expressed in colon and placenta. Isoform beta-4E is also expressed in epidermis, lung, duodenum, heart, spleen and stomach.
<b>Involvement in disease</b>	Defects in ITGB4 are a cause of epidermolysis bullosa letalis with pyloric atresia (EB-PA) [MIM:226730]; also known as junctional epidermolysis bullosa with pyloric atresia (PA-JEB) or aplasia cutis congenita with gastrointestinal atresia. EB-PA is an autosomal recessive, frequently lethal, epidermolysis bullosa with variable involvement of skin, nails, mucosa, and with variable effects on the digestive system. It is characterized by mucocutaneous fragility, aplasia cutis congenita, and gastrointestinal atresia, which most commonly affects the pylorus. Pyloric atresia is a primary manifestation rather than a scarring process secondary to epidermolysis bullosa. Defects in ITGB4 are a cause of generalized atrophic benign epidermolysis bullosa (GABEB) [MIM:226650]. GABEB is a non-lethal, adult form of junctional epidermolysis bullosa characterized by life-long blistering of the skin, associated with hair and tooth abnormalities.
<b>Sequence similarities</b>	Belongs to the integrin beta chain family. Contains 1 Calx-beta domain. Contains 4 fibronectin type-III domains. Contains 1 PSI domain. Contains 1 VWFA domain.
<b>Domain</b>	The fibronectin type-III-like domains bind BPAG1 and plectin and probably also recruit BP230.
<b>Cellular localization</b>	Membrane.

## Images



Immunohistochemistry (Frozen sections) analysis of human tonsil tissue section labeling Integrin beta 4 with ab22486.

Immunohistochemistry (Frozen sections) - FITC  
Anti-Integrin beta 4 antibody [450-9D] (ab22486)

**Please note:** All products are "FOR RESEARCH USE ONLY. NOT FOR USE IN DIAGNOSTIC PROCEDURES"

#### Our Abpromise to you: Quality guaranteed and expert technical support

---

- Replacement or refund for products not performing as stated on the datasheet
- Valid for 12 months from date of delivery
- Response to your inquiry within 24 hours
- We provide support in Chinese, English, French, German, Japanese and Spanish
- Extensive multi-media technical resources to help you
- We investigate all quality concerns to ensure our products perform to the highest standards

If the product does not perform as described on this datasheet, we will offer a refund or replacement. For full details of the Abpromise, please visit <https://www.abcam.com/abpromise> or contact our technical team.

#### Terms and conditions

---

- Guarantee only valid for products bought direct from Abcam or one of our authorized distributors