

Product datasheet

FITC Anti-Ly-6A/E (Sca-1) antibody [D7] ab268016

[1 References](#) [1 Image](#)

Overview

Product name	FITC Anti-Ly-6A/E (Sca-1) antibody [D7]
Description	FITC Rat monoclonal [D7] to Ly-6A/E (Sca-1)
Host species	Rat
Conjugation	FITC. Ex: 493nm, Em: 528nm
Tested applications	Suitable for: Flow Cyt
Species reactivity	Reacts with: Mouse
Immunogen	The details of the immunogen for this antibody are not available.
Positive control	Flow cyt: ConA-stimulated mouse splenocytes.
General notes	<p>The Life Science industry has been in the grips of a reproducibility crisis for a number of years. Abcam is leading the way in addressing this with our range of recombinant monoclonal antibodies and knockout edited cell lines for gold-standard validation. Please check that this product meets your needs before purchasing.</p> <p>If you have any questions, special requirements or concerns, please send us an inquiry and/or contact our Support team ahead of purchase. Recommended alternatives for this product can be found below, along with publications, customer reviews and Q&As</p>

Properties

Form	Liquid
Storage instructions	Shipped at 4°C. Store at +4°C. Store In the Dark.
Storage buffer	Preservative: 0.09% Sodium azide Aqueous buffer (may contain carrier protein/stabilizer)
Purity	Affinity purified
Purification notes	Purified from tissue culture supernatant.
Clonality	Monoclonal
Clone number	D7
Isotype	IgG2a
Light chain type	kappa

Applications

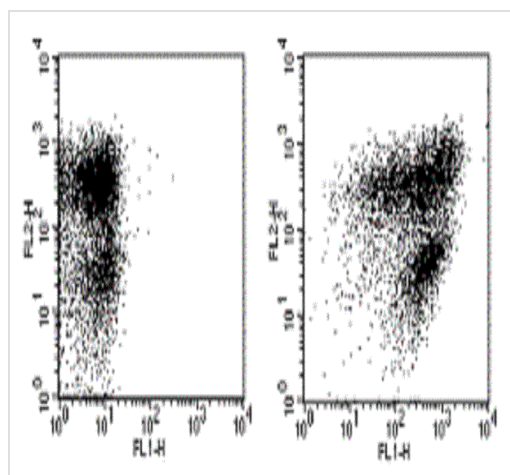
The Abpromise guarantee Our **Abpromise guarantee** covers the use of ab268016 in the following tested applications. The application notes include recommended starting dilutions; optimal dilutions/concentrations should be determined by the end user.

Application	Abreviews	Notes
Flow Cyt		Use at an assay dependent concentration. 0.125 -0.25 µg / 100 µL (containing 10 ⁵ - 10 ⁸ cells).

Target

Function	T-cell activation.
Tissue specificity	Widely expressed.
Sequence similarities	Contains 1 UPAR/Ly6 domain.
Post-translational modifications	O-glycosylated. Not N-glycosylated. Not phosphorylated.
Cellular localization	Cell membrane.

Images



Flow Cytometry - FITC Anti-Ly-6A/E (Sca-1)
antibody [D7] (ab268016)

Flow cytometric analysis of ConA-stimulated mouse splenocytes using ab268016 at 0.25 µg / 100 µL reaction.

Cells were labeled with 0.25 µg of a CD3-PE antibody and either 0.5 µg of a rat IgG2a kappa isotype control (Left) or 0.25 µg of ab268016 (Right).

Gated on total viable cells.

Please note: All products are "FOR RESEARCH USE ONLY. NOT FOR USE IN DIAGNOSTIC PROCEDURES"

Our Abpromise to you: Quality guaranteed and expert technical support

- Replacement or refund for products not performing as stated on the datasheet
- Valid for 12 months from date of delivery
- Response to your inquiry within 24 hours

- We provide support in Chinese, English, French, German, Japanese and Spanish
- Extensive multi-media technical resources to help you
- We investigate all quality concerns to ensure our products perform to the highest standards

If the product does not perform as described on this datasheet, we will offer a refund or replacement. For full details of the Abpromise, please visit <https://www.abcam.com/abpromise> or contact our technical team.

Terms and conditions

- Guarantee only valid for products bought direct from Abcam or one of our authorized distributors