

## Product datasheet

# FITC Anti-Ly6g antibody [1A8] ab210203

[1 References](#) [1 Image](#)

### Overview

---

<b>Product name</b>	FITC Anti-Ly6g antibody [1A8]
<b>Description</b>	FITC Rat monoclonal [1A8] to Ly6g
<b>Host species</b>	Rat
<b>Conjugation</b>	FITC. Ex: 493nm, Em: 528nm
<b>Tested applications</b>	<b>Suitable for:</b> Flow Cyt
<b>Species reactivity</b>	<b>Reacts with:</b> Mouse
<b>Immunogen</b>	The details of the immunogen for this antibody are not available.
<b>Positive control</b>	C57Bl/6 bone marrow cells.
<b>General notes</b>	<p>The Life Science industry has been in the grips of a reproducibility crisis for a number of years. Abcam is leading the way in addressing this with our range of recombinant monoclonal antibodies and knockout edited cell lines for gold-standard validation. Please check that this product meets your needs before purchasing.</p> <p>If you have any questions, special requirements or concerns, please send us an inquiry and/or contact our Support team ahead of purchase. Recommended alternatives for this product can be found below, along with publications, customer reviews and Q&amp;As</p>

### Properties

---

<b>Form</b>	Liquid
<b>Storage instructions</b>	Shipped at 4°C. Store at +4°C. Store In the Dark.
<b>Storage buffer</b>	pH: 7.20 Preservative: 0.09% Sodium azide Constituents: 0.87% Sodium chloride, 0.1% Gelatin, 0.12% Monobasic dihydrogen sodium phosphate
<b>Purity</b>	Protein A purified
<b>Purification notes</b>	ab210203 was purified from tissue culture supernatant via affinity chromatography. The purified antibody was conjugated under optimal conditions, with unreacted dye removed from the preparation.
<b>Clonality</b>	Monoclonal
<b>Clone number</b>	1A8

**Isotype** IgG2a  
**Light chain type** kappa

## Applications

**The Abpromise guarantee** Our **Abpromise guarantee** covers the use of ab210203 in the following tested applications. The application notes include recommended starting dilutions; optimal dilutions/concentrations should be determined by the end user.

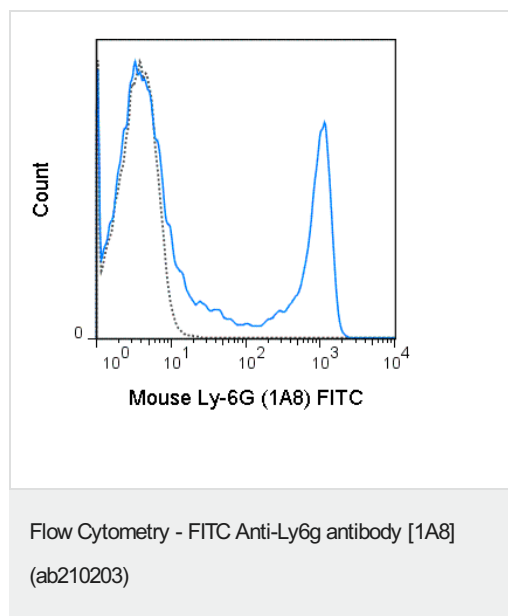
Application	Abreviews	Notes
Flow Cyt		Use at an assay dependent concentration. Suggested use 0.25 µg.

## Target

**Relevance** Ly6G is a GPI-anchored protein, that is also known as the myeloid differentiation antigen Gr1. The antigen is transiently expressed on monocytes in the bone marrow. The level of antigen expression in the bone marrow directly correlates with granulocyte differentiation and maturation. Ly6G is expressed predominantly on neutrophils, also in a subset of eosinophils, differentiating pre-monocytes, and plasmacytoid dendritic cells.

**Cellular localization** Attached to the membrane by a GPI-anchor.

## Images



Flow cytometric analysis of C57Bl/6 mouse bone marrow cells labeling Ly6g with ab210203 at 0.25 µg (solid line) or FITC rat IgG2a isotype control at 0.25 µg (dashed line).

**Please note:** All products are "FOR RESEARCH USE ONLY. NOT FOR USE IN DIAGNOSTIC PROCEDURES"

**Our Abpromise to you: Quality guaranteed and expert technical support**

- Replacement or refund for products not performing as stated on the datasheet
- Valid for 12 months from date of delivery
- Response to your inquiry within 24 hours
  
- We provide support in Chinese, English, French, German, Japanese and Spanish
- Extensive multi-media technical resources to help you
- We investigate all quality concerns to ensure our products perform to the highest standards

If the product does not perform as described on this datasheet, we will offer a refund or replacement. For full details of the Abpromise, please visit <https://www.abcam.com/abpromise> or contact our technical team.

### **Terms and conditions**

---

- Guarantee only valid for products bought direct from Abcam or one of our authorized distributors