

FITC Anti-Methylated Lysine antibody ab53527

★★★★★ [1 Abreviews](#) [1 Image](#)

Overview

Product name	FITC Anti-Methylated Lysine antibody
Description	FITC Rabbit polyclonal to Methylated Lysine
Host species	Rabbit
Conjugation	FITC. Ex: 493nm, Em: 528nm
Specificity	This antibody recognizes proteins methylated on lysine residues (mono and di-methyllysine). It does not cross-react with acetylated proteins. Cross-reactivity to trimethyllysine has not been tested.
Tested applications	Suitable for: ICC/IF
Species reactivity	Reacts with: Species independent
Immunogen	Chemical/ Small Molecule corresponding to Methylated Lysine conjugated to keyhole limpet haemocyanin. Methylated protein(s) conjugated to KLH.
Positive control	Human melanoma cells (MMRU).
General notes	<p>FITC/Ab molar ratio: approximately 10:1</p> <p>The Life Science industry has been in the grips of a reproducibility crisis for a number of years. Abcam is leading the way in addressing this with our range of recombinant monoclonal antibodies and knockout edited cell lines for gold-standard validation. Please check that this product meets your needs before purchasing.</p> <p>If you have any questions, special requirements or concerns, please send us an inquiry and/or contact our Support team ahead of purchase. Recommended alternatives for this product can be found below, along with publications, customer reviews and Q&As</p>

Properties

Form	Liquid
Storage instructions	Shipped at 4°C. Store at +4°C.
Storage buffer	<p>pH: 6</p> <p>Constituents: 50% Glycerol (glycerin, glycerine), PBS</p>
Purity	Immunogen affinity purified
Purification notes	This antibody was affinity purified using N epsilon-monomethyllysine and dimethyllysine on Agarose as an affinity matrix.

Clonality	Polyclonal
Isotype	IgG

Applications

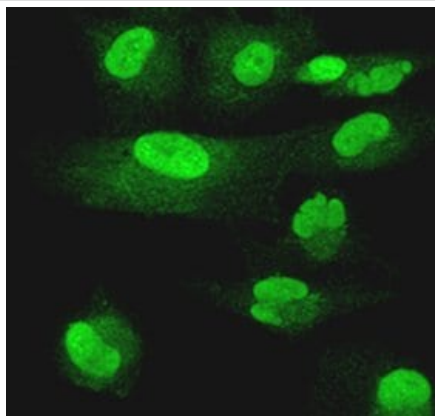
The Abpromise guarantee Our **Abpromise guarantee** covers the use of ab53527 in the following tested applications. The application notes include recommended starting dilutions; optimal dilutions/concentrations should be determined by the end user.

Application	Abreviews	Notes
ICC/IF		1/50 - 1/100.

Target

Relevance Many proteins are post translationally modified. Modifications such as phosphorylation, glycosylation, ubiquitination and methylation have been shown to play an important role in the development, physiology and disease of animals and plants. Histone lysine methylation is regarded as a very stable modification with important functions in epigenetic gene control and for organizing chromatin domains.

Images



This image shows human melanoma (MMRU) cells stained with ab53527 at 1/50 dilution.

Immunocytochemistry/ Immunofluorescence - FITC
Anti-Methylated Lysine antibody (ab53527)

Please note: All products are "FOR RESEARCH USE ONLY. NOT FOR USE IN DIAGNOSTIC PROCEDURES"

Our Abpromise to you: Quality guaranteed and expert technical support

- Replacement or refund for products not performing as stated on the datasheet
- Valid for 12 months from date of delivery
- Response to your inquiry within 24 hours

- We provide support in Chinese, English, French, German, Japanese and Spanish
- Extensive multi-media technical resources to help you
- We investigate all quality concerns to ensure our products perform to the highest standards

If the product does not perform as described on this datasheet, we will offer a refund or replacement. For full details of the Abpromise, please visit <https://www.abcam.com/abpromise> or contact our technical team.

Terms and conditions

- Guarantee only valid for products bought direct from Abcam or one of our authorized distributors