

Product datasheet

FITC Anti-MHC Class 1 H2 Db/H2-D1 antibody [27-11-13] ab25028

[1 Image](#)

Overview

Product name	FITC Anti-MHC Class 1 H2 Db/H2-D1 antibody [27-11-13]
Description	FITC Mouse monoclonal [27-11-13] to MHC Class 1 H2 Db/H2-D1
Host species	Mouse
Conjugation	FITC. Ex: 493nm, Em: 528nm
Specificity	ab25028 recognizes with the α3 domain of H-2Db class I MHC (H2-D1) antigen. The antibody cross-reacts with the α3 domain of H-2Ld, H-2Dq and H-2Lq, but not H-2Kd or H-2Dd. Reactivity with haplotypes k, f, p, r, and s has not been observed.
Tested applications	Suitable for: Flow Cyt
Species reactivity	Reacts with: Mouse
Immunogen	Tissue, cells or virus corresponding to Mouse MHC Class 1 H2 Db/H2-D1. BDF1 mouse splenocytes
Epitope	An epitope on the α chain of H-2Db
Positive control	Flow cyt: Mouse C57BL/6 splenocytes.
General notes	<p>The Life Science industry has been in the grips of a reproducibility crisis for a number of years. Abcam is leading the way in addressing this with our range of recombinant monoclonal antibodies and knockout edited cell lines for gold-standard validation. Please check that this product meets your needs before purchasing.</p> <p>If you have any questions, special requirements or concerns, please send us an inquiry and/or contact our Support team ahead of purchase. Recommended alternatives for this product can be found below, along with publications, customer reviews and Q&As</p>

Properties

Form	Liquid
Storage instructions	Shipped at 4°C. Store at +4°C. Store In the Dark.
Storage buffer	<p>pH: 7.4</p> <p>Preservative: 0.1% Sodium azide</p> <p>Constituent: PBS</p>
Purity	Affinity purified

Clonality	Monoclonal
Clone number	27-11-13
Isotype	IgG2a
Light chain type	kappa

Applications

The Abpromise guarantee Our **Abpromise guarantee** covers the use of ab25028 in the following tested applications.

The application notes include recommended starting dilutions; optimal dilutions/concentrations should be determined by the end user.

Application	Abreviews	Notes
Flow Cyt		Use 1 µg for 10 ⁶ cells. ab18455 - Mouse monoclonal IgG2a, is suitable for use as an isotype control with this antibody.

Target

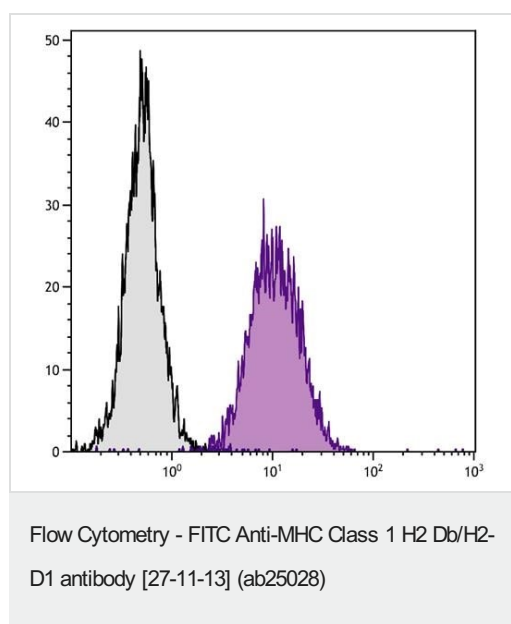
Relevance

In the mouse the MHC Class 1 loci are called H2K, H2L and H2D. The equivalent loci in the human MHC are HLA (Human Leukocyte Antigen). MHC class I molecules are heterodimers, consisting of a single transmembrane polypeptide chain (the α-chain) which is highly polymorphic, and the invariant β2 microglobulin (which is encoded elsewhere, not in the MHC). MHC class I molecules are found on almost every nucleated cell of the body. Their major function is to present peptide fragments derived from antigens to cytotoxic T cells.

Cellular localization

Cell Membrane; single pass type I membrane protein

Images



Mouse C57BL/6 splenocytes stained for MHC Class 1 H2 Db/H2-D1 using ab25028 at 1 µg/10⁶ cells in flow cytometric analysis.

Our Abpromise to you: Quality guaranteed and expert technical support

- Replacement or refund for products not performing as stated on the datasheet
- Valid for 12 months from date of delivery
- Response to your inquiry within 24 hours

- We provide support in Chinese, English, French, German, Japanese and Spanish
- Extensive multi-media technical resources to help you
- We investigate all quality concerns to ensure our products perform to the highest standards

If the product does not perform as described on this datasheet, we will offer a refund or replacement. For full details of the Abpromise, please visit <https://www.abcam.com/abpromise> or contact our technical team.

Terms and conditions

- Guarantee only valid for products bought direct from Abcam or one of our authorized distributors