

Product datasheet

FITC Anti-NCAM1 antibody [LT56] ab234250

[2 Images](#)

Overview

Product name	FITC Anti-NCAM1 antibody [LT56]
Description	FITC Mouse monoclonal [LT56] to NCAM1
Host species	Mouse
Conjugation	FITC. Ex: 493nm, Em: 528nm
Tested applications	Suitable for: Flow Cyt
Species reactivity	Reacts with: Human
Immunogen	Tissue, cells or virus corresponding to Human NCAM1. Cell line KG1a.
Positive control	Flow: Human peripheral blood.
General notes	<p>The Life Science industry has been in the grips of a reproducibility crisis for a number of years. Abcam is leading the way in addressing this with our range of recombinant monoclonal antibodies and knockout edited cell lines for gold-standard validation. Please check that this product meets your needs before purchasing.</p> <p>If you have any questions, special requirements or concerns, please send us an inquiry and/or contact our Support team ahead of purchase. Recommended alternatives for this product can be found below, along with publications, customer reviews and Q&As</p>

Properties

Form	Liquid
Storage instructions	Shipped at 4°C. Store at +4°C. Do Not Freeze.
Storage buffer	pH: 7.40 Preservative: 0.0975% Sodium azide Constituent: PBS
Purity	Size exclusion
Clonality	Monoclonal
Clone number	LT56
Isotype	IgG2a

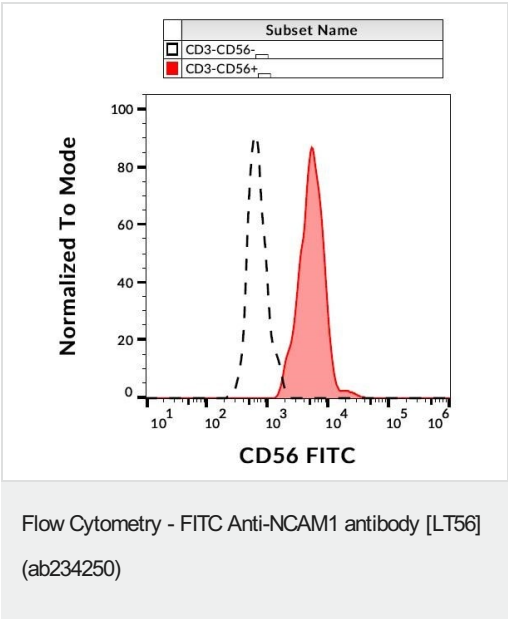
Applications

The Abpromise guarantee Our **Abpromise guarantee** covers the use of ab234250 in the following tested applications. The application notes include recommended starting dilutions; optimal dilutions/concentrations should be determined by the end user.

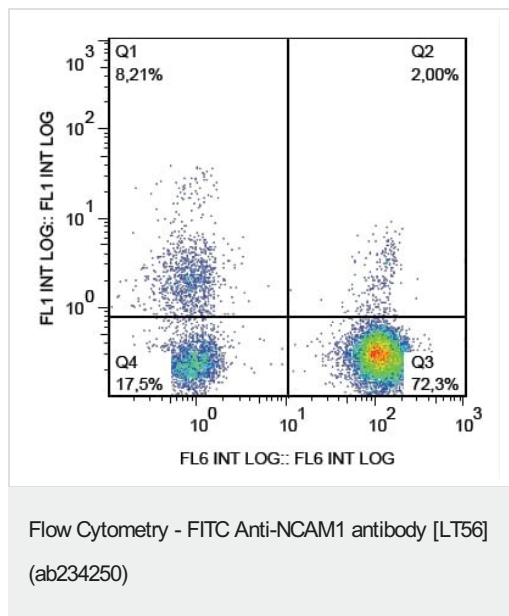
Application	Abreviews	Notes
Flow Cyt		Use 4µl for 10 ⁶ cells.

Target	
Function	This protein is a cell adhesion molecule involved in neuron-neuron adhesion, neurite fasciculation, outgrowth of neurites, etc.
Sequence similarities	Contains 2 fibronectin type-III domains. Contains 5 Ig-like C2-type (immunoglobulin-like) domains.
Cellular localization	Secreted and Cell membrane.

Images



Surface staining of human peripheral blood with ab234250 at 1/25 dilution.



Flow cytometric analysis of Human peripheral blood cells labeling NCAM1 using ab234250. Surface staining, gated on leukocytes.

Please note: All products are "FOR RESEARCH USE ONLY. NOT FOR USE IN DIAGNOSTIC PROCEDURES"

Our Abpromise to you: Quality guaranteed and expert technical support

- Replacement or refund for products not performing as stated on the datasheet
- Valid for 12 months from date of delivery
- Response to your inquiry within 24 hours
- We provide support in Chinese, English, French, German, Japanese and Spanish
- Extensive multi-media technical resources to help you
- We investigate all quality concerns to ensure our products perform to the highest standards

If the product does not perform as described on this datasheet, we will offer a refund or replacement. For full details of the Abpromise, please visit <https://www.abcam.com/abpromise> or contact our technical team.

Terms and conditions

- Guarantee only valid for products bought direct from Abcam or one of our authorized distributors