


## Product datasheet

### FITC Anti-NCAM1 antibody [MY31] ab218636

1 Image

#### Overview

---

<b>Product name</b>	FITC Anti-NCAM1 antibody [MY31]
<b>Description</b>	FITC Mouse monoclonal [MY31] to NCAM1
<b>Host species</b>	Mouse
<b>Conjugation</b>	FITC. Ex: 493nm, Em: 528nm
<b>Tested applications</b>	<b>Suitable for:</b> Flow Cyt
<b>Species reactivity</b>	<b>Reacts with:</b> Human <b>Predicted to work with:</b> Chimpanzee, Cynomolgus monkey, Rhesus monkey 
<b>Immunogen</b>	The details of the immunogen for this antibody are not available.
<b>Positive control</b>	FACS: Human peripheral blood lymphocytes.
<b>General notes</b>	<p>The Life Science industry has been in the grips of a reproducibility crisis for a number of years. Abcam is leading the way in addressing this with our range of recombinant monoclonal antibodies and knockout edited cell lines for gold-standard validation. Please check that this product meets your needs before purchasing.</p> <p>If you have any questions, special requirements or concerns, please send us an inquiry and/or contact our Support team ahead of purchase. Recommended alternatives for this product can be found below, along with publications, customer reviews and Q&amp;As</p>

#### Properties

---

<b>Form</b>	Liquid
<b>Storage instructions</b>	Shipped at 4°C. Store at +4°C. Store In the Dark.
<b>Storage buffer</b>	pH: 7.20 Preservative: 0.09% Sodium azide Constituents: 0.12% Monobasic dihydrogen sodium phosphate, 0.87% Sodium chloride, 0.1% Gelatin
<b>Purity</b>	Protein G purified
<b>Purification notes</b>	ab218636 was purified from tissue culture supernatant via affinity chromatography
<b>Clonality</b>	Monoclonal
<b>Clone number</b>	MY31
<b>Isotype</b>	IgG1

Light chain type

kappa

## Applications

### The Abpromise guarantee

Our **Abpromise guarantee** covers the use of ab218636 in the following tested applications.

The application notes include recommended starting dilutions; optimal dilutions/concentrations should be determined by the end user.

Application	Abreviews	Notes
Flow Cyt		Use 5µl for 10 <sup>5-8</sup> cells. in a final volume of approximately 100 µL.

## Target

### Function

This protein is a cell adhesion molecule involved in neuron-neuron adhesion, neurite fasciculation, outgrowth of neurites, etc.

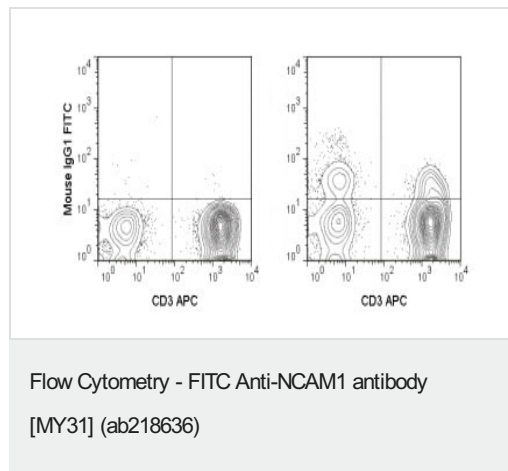
### Sequence similarities

Contains 2 fibronectin type-III domains.  
Contains 5 Ig-like C2-type (immunoglobulin-like) domains.

### Cellular localization

Secreted and Cell membrane.

## Images



Flow cytometric analysis of Human peripheral blood lymphocytes labeling NCAM with APC Anti-Human CD3 and 5 uL (1 ug) ab218636 (right panel) or 1 ug FITC Mouse IgG1 isotype control (left panel).

**Please note:** All products are "FOR RESEARCH USE ONLY. NOT FOR USE IN DIAGNOSTIC PROCEDURES"

## Our Abpromise to you: Quality guaranteed and expert technical support

- Replacement or refund for products not performing as stated on the datasheet
- Valid for 12 months from date of delivery
- Response to your inquiry within 24 hours
- We provide support in Chinese, English, French, German, Japanese and Spanish
- Extensive multi-media technical resources to help you

- We investigate all quality concerns to ensure our products perform to the highest standards

If the product does not perform as described on this datasheet, we will offer a refund or replacement. For full details of the Abpromise, please visit <https://www.abcam.com/abpromise> or contact our technical team.

#### **Terms and conditions**

---

- Guarantee only valid for products bought direct from Abcam or one of our authorized distributors