

FITC Anti-PR3 antibody [PR3G-2] ab65255

[1 References](#) [1 Image](#)

Overview

Product name	FITC Anti-PR3 antibody [PR3G-2]
Description	FITC Mouse monoclonal [PR3G-2] to PR3
Host species	Mouse
Conjugation	FITC. Ex: 493nm, Em: 528nm
Specificity	This antibody does not inhibit the biological activity of PR3.
Tested applications	Suitable for: Flow Cyt (Intra)
Species reactivity	Reacts with: Human
Immunogen	Tissue/ cell preparation (Human): a crude granule extract.
Positive control	Flow Cyt (Intra): THP1 cells.
General notes	<p>The Life Science industry has been in the grips of a reproducibility crisis for a number of years. Abcam is leading the way in addressing this with our range of recombinant monoclonal antibodies and knockout edited cell lines for gold-standard validation. Please check that this product meets your needs before purchasing.</p> <p>If you have any questions, special requirements or concerns, please send us an inquiry and/or contact our Support team ahead of purchase. Recommended alternatives for this product can be found below, along with publications, customer reviews and Q&As</p>

Properties

Form	Liquid
Storage instructions	Shipped at 4°C. Store at +4°C.
Storage buffer	Preservative: 0.02% Sodium azide Constituents: PBS, 1% BSA
Purity	Protein G purified
Clonality	Monoclonal
Clone number	PR3G-2
Isotype	IgG1

Applications

The Abpromise guarantee

Our **Abpromise guarantee** covers the use of ab65255 in the following tested applications.

The application notes include recommended starting dilutions; optimal dilutions/concentrations should be determined by the end user.

Application	Abreviews	Notes
Flow Cyt (Intra)		Use 0.5µg for 10 ⁶ cells. ab91356 - Mouse monoclonal IgG1, is suitable for use as an isotype control with this antibody.

Target

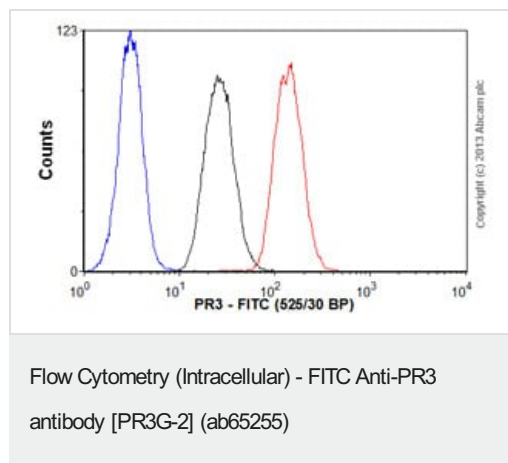
Function

Polymorphonuclear leukocyte serine protease that degrades elastin, fibronectin, laminin, vitronectin, and collagen types I, III, and IV (in vitro) and causes emphysema when administered by tracheal insufflation to hamsters.

Sequence similarities

Belongs to the peptidase S1 family. Elastase subfamily.
Contains 1 peptidase S1 domain.

Images



Overlay histogram showing THP1 cells stained with ab65255 (red line). The cells were fixed with 80% methanol (5 min) and then permeabilized with 0.1% PBS-Tween for 20 min. The cells were then incubated in 1x PBS / 10% normal goat serum / 0.3M glycine to block non-specific protein-protein interactions followed by the antibody (ab65255, 0.5µg/1x10⁶ cells) for 30 min at 22°C. Isotype control antibody (black line) was mouse IgG1 [MOPC-21] (FITC) (**ab18435**, 0.5µg/1x10⁶ cells) used under the same conditions. Unlabelled sample (blue line). Acquisition of >5,000 events were collected using a 20mW Argon ion laser (488nm) and 525/30 bandpass filter.

Please note: All products are "FOR RESEARCH USE ONLY. NOT FOR USE IN DIAGNOSTIC PROCEDURES"

Our Abpromise to you: Quality guaranteed and expert technical support

- Replacement or refund for products not performing as stated on the datasheet
- Valid for 12 months from date of delivery
- Response to your inquiry within 24 hours
- We provide support in Chinese, English, French, German, Japanese and Spanish
- Extensive multi-media technical resources to help you
- We investigate all quality concerns to ensure our products perform to the highest standards

If the product does not perform as described on this datasheet, we will offer a refund or replacement. For full details of the Abpromise,

please visit <https://www.abcam.com/abpromise> or contact our technical team.

Terms and conditions

- Guarantee only valid for products bought direct from Abcam or one of our authorized distributors