

Product datasheet

FITC Anti-TCR V alpha 2 antibody [F1] ab171102

1 Image

Overview

Product name	FITC Anti-TCR V alpha 2 antibody [F1]
Description	FITC Mouse monoclonal [F1] to TCR V alpha 2
Host species	Mouse
Conjugation	FITC. Ex: 493nm, Em: 528nm
Tested applications	Suitable for: Flow Cyt (Intra)
Species reactivity	Reacts with: Human
Immunogen	Full length protein corresponding to Human TCR V alpha 2. Native protein Database link: P01848
Positive control	Flow Cyt (intra): TCR V alpha 2 positive MOLT16 cells or negative HPB-ALL cells.
General notes	<p>The Life Science industry has been in the grips of a reproducibility crisis for a number of years. Abcam is leading the way in addressing this with our range of recombinant monoclonal antibodies and knockout edited cell lines for gold-standard validation. Please check that this product meets your needs before purchasing.</p> <p>If you have any questions, special requirements or concerns, please send us an inquiry and/or contact our Support team ahead of purchase. Recommended alternatives for this product can be found below, along with publications, customer reviews and Q&As</p>

Properties

Form	Liquid
Storage instructions	Shipped at 4°C. Store at +4°C. Store In the Dark.
Storage buffer	Preservative: 0.1% Sodium azide Constituents: 0.5% BSA, 99% PBS
Purity	Protein A purified
Clonality	Monoclonal
Clone number	F1
Isotype	IgG2a

Applications

The Abpromise guarantee

Our **Abpromise guarantee** covers the use of ab171102 in the following tested applications.

The application notes include recommended starting dilutions; optimal dilutions/concentrations should be determined by the end user.

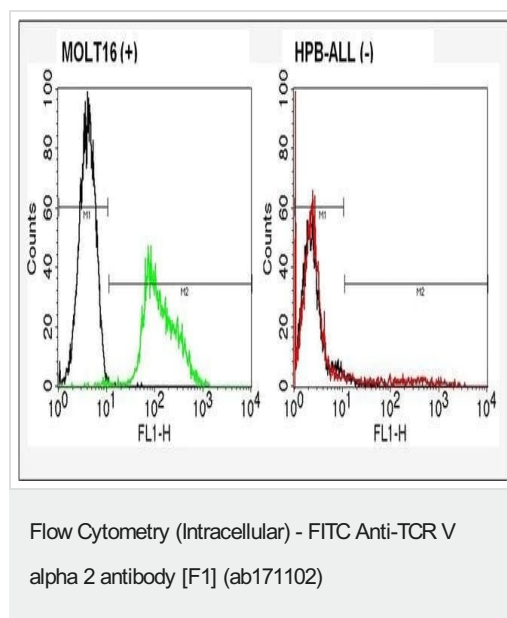
Application	Abreviews	Notes
Flow Cyt (Intra)		Use 5µl for 10 ⁴ cells. ab91362 - Mouse monoclonal IgG2a, is suitable for use as an isotype control with this antibody.

Target

Cellular localization

Membrane; Single-pass membrane protein

Images



Flow cytometry analysis of TCR V alpha 2 (F1) on TCR V alpha 2 positive MOLT16 cells (left panel) or negative control HPB-ALL cells (right panel). Equal numbers of cells were stained with a FITC labeled TCR V alpha 2 (F1) monoclonal antibody (ab171102), or were left unstained. 5 µL of primary antibody were used per test. All antibody incubations were performed for 30 minutes at room temperature. A representative 10,000 cells were acquired for each sample.

Please note: All products are "FOR RESEARCH USE ONLY. NOT FOR USE IN DIAGNOSTIC PROCEDURES"

Our Abpromise to you: Quality guaranteed and expert technical support

- Replacement or refund for products not performing as stated on the datasheet
- Valid for 12 months from date of delivery
- Response to your inquiry within 24 hours
- We provide support in Chinese, English, French, German, Japanese and Spanish
- Extensive multi-media technical resources to help you
- We investigate all quality concerns to ensure our products perform to the highest standards

If the product does not perform as described on this datasheet, we will offer a refund or replacement. For full details of the Abpromise, please visit <https://www.abcam.com/abpromise> or contact our technical team.

Terms and conditions

- Guarantee only valid for products bought direct from Abcam or one of our authorized distributors