

Product datasheet

FITC Anti-TLR2 antibody [T2.5] ab59711

[6 References](#) [2 Images](#)

Overview

Product name	FITC Anti-TLR2 antibody [T2.5]
Description	FITC Mouse monoclonal [T2.5] to TLR2
Host species	Mouse
Conjugation	FITC. Ex: 493nm, Em: 528nm
Tested applications	Suitable for: Flow Cyt
Species reactivity	Reacts with: Mouse, Human
Immunogen	Mouse TLR2 peptide.
Positive control	Flow Cyt: RAW264.7 and THP-1 cells.
General notes	<p>The Life Science industry has been in the grips of a reproducibility crisis for a number of years. Abcam is leading the way in addressing this with our range of recombinant monoclonal antibodies and knockout edited cell lines for gold-standard validation. Please check that this product meets your needs before purchasing.</p> <p>If you have any questions, special requirements or concerns, please send us an inquiry and/or contact our Support team ahead of purchase. Recommended alternatives for this product can be found below, along with publications, customer reviews and Q&As</p>

Properties

Form	Liquid
Storage instructions	Shipped at 4°C. Store at +4°C.
Storage buffer	Preservative: 0.02% Sodium azide Constituents: PBS, 1% BSA
Purity	Protein G purified
Purification notes	0.2 µm filtered.
Clonality	Monoclonal
Clone number	T2.5
Isotype	IgG1

Applications

The Abpromise guarantee

Our **Abpromise guarantee** covers the use of ab59711 in the following tested applications.

The application notes include recommended starting dilutions; optimal dilutions/concentrations should be determined by the end user.

Application	Abreviews	Notes
Flow Cyt		Use 10µl for 10 ⁶ cells. ab91356 - Mouse monoclonal IgG1, is suitable for use as an isotype control with this antibody.

Target

Function

Cooperates with LY96 to mediate the innate immune response to bacterial lipoproteins and other microbial cell wall components. Cooperates with TLR1 to mediate the innate immune response to bacterial lipoproteins or lipopeptides. Acts via MYD88 and TRAF6, leading to NF-kappa-B activation, cytokine secretion and the inflammatory response. May also promote apoptosis in response to lipoproteins. Recognizes mycoplasmal macrophage-activating lipopeptide-2kD (MALP-2), soluble tuberculosis factor (STF), phenol-soluble modulin (PSM) and B.burgdorferi outer surface protein A lipoprotein (OspA-L) cooperatively with TLR6.

Tissue specificity

Highly expressed in peripheral blood leukocytes, in particular in monocytes, in bone marrow, lymph node and in spleen. Also detected in lung and in fetal liver. Levels are low in other tissues.

Sequence similarities

Belongs to the Toll-like receptor family.
Contains 14 LRR (leucine-rich) repeats.
Contains 1 TIR domain.

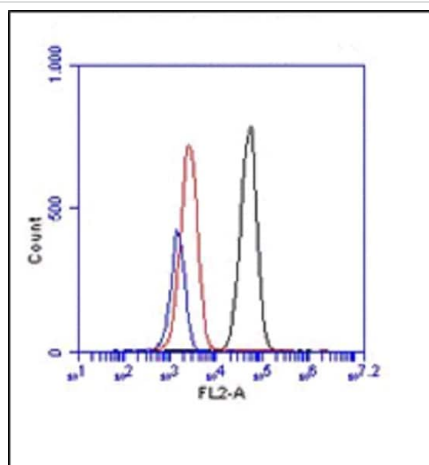
Post-translational modifications

Glycosylation of Asn-442 is critical for secretion of the N-terminal ectodomain of TLR2.

Cellular localization

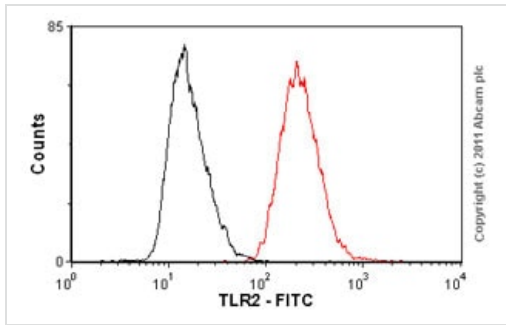
Membrane.

Images



Flow cytometric analysis of RAW 264.7 (mouse macrophage cell line transformed with Abelson murine leukemia virus) cells staining TLR2 using ab59711 at a 10 µg/mL (blue). Red and black represent the isotype control, cells only.

Flow Cytometry - FITC Anti-TLR2 antibody [T2.5]
(ab59711)



Flow Cytometry - FITC Anti-TLR2 antibody [T2.5]
(ab59711)

Overlay histogram showing THP1 cells stained with ab59711 (red line). The cells were fixed with 80% methanol (5 min) and incubated in 1x PBS / 10% normal goat serum / 0.3M glycine to block non-specific protein-protein interactions. The cells were then incubated with the antibody (ab59711, 1 µg/1x10⁶ cells) for 30 min at 22°C. Isotype control antibody (black line) was mouse IgG1 FITC (1 µg/1x10⁶ cells) used under the same conditions. Acquisition of >5,000 events was performed. This antibody gave a positive signal in THP1 cells fixed with 4% paraformaldehyde used under the same conditions.

Please note that Abcam do not have any data for use of this antibody on non-fixed cells. We welcome any customer feedback.

Please note: All products are "FOR RESEARCH USE ONLY. NOT FOR USE IN DIAGNOSTIC PROCEDURES"

Our Abpromise to you: Quality guaranteed and expert technical support

- Replacement or refund for products not performing as stated on the datasheet
- Valid for 12 months from date of delivery
- Response to your inquiry within 24 hours
- We provide support in Chinese, English, French, German, Japanese and Spanish
- Extensive multi-media technical resources to help you
- We investigate all quality concerns to ensure our products perform to the highest standards

If the product does not perform as described on this datasheet, we will offer a refund or replacement. For full details of the Abpromise, please visit <https://www.abcam.com/abpromise> or contact our technical team.

Terms and conditions

- Guarantee only valid for products bought direct from Abcam or one of our authorized distributors