

# FITC Anti-TRAP/CD40L antibody [24-31] $\alpha$ b134404

★★★★★ [4 Abreviews](#) [1 Image](#)

### Overview

<b>Product name</b>	FITC Anti-TRAP/CD40L antibody [24-31]
<b>Description</b>	FITC Mouse monoclonal [24-31] to TRAP/CD40L
<b>Host species</b>	Mouse
<b>Conjugation</b>	FITC. Ex: 493nm, Em: 528nm
<b>Tested applications</b>	<b>Suitable for:</b> Flow Cyt
<b>Species reactivity</b>	<b>Reacts with:</b> Human
<b>Immunogen</b>	Fusion protein corresponding to Human TRAP/CD40L. Database link: <a href="#">P29965</a>
<b>Positive control</b>	Human peripheral blood cells stimulated for 5 hours with Cell Stimulation Cocktail.
<b>General notes</b>	<p>The Life Science industry has been in the grips of a reproducibility crisis for a number of years. Abcam is leading the way in addressing this with our range of recombinant monoclonal antibodies and knockout edited cell lines for gold-standard validation. Please check that this product meets your needs before purchasing.</p> <p>If you have any questions, special requirements or concerns, please send us an inquiry and/or contact our Support team ahead of purchase. Recommended alternatives for this product can be found below, along with publications, customer reviews and Q&amp;As</p>

### Properties

<b>Form</b>	Liquid
<b>Storage instructions</b>	Shipped at 4°C. Store at +4°C.
<b>Storage buffer</b>	pH: 7.20 Preservative: 0.09% Sodium azide Constituents: PBS, 0.2% BSA
<b>Purity</b>	Protein G purified
<b>Clonality</b>	Monoclonal
<b>Clone number</b>	24-31
<b>Isotype</b>	IgG1
<b>Light chain type</b>	kappa

## Applications

### The Abpromise guarantee

Our **Abpromise guarantee** covers the use of ab134404 in the following tested applications.

The application notes include recommended starting dilutions; optimal dilutions/concentrations should be determined by the end user.

Application	Abreviews	Notes
Flow Cyt	★★★★★ (4)	Use 5µl for 10 <sup>6</sup> cells. <b>ab106163</b> - Mouse monoclonal IgG1, is suitable for use as an isotype control with this antibody.

## Target

### Function

Mediates B-cell proliferation in the absence of co-stimulus as well as IgE production in the presence of IL-4. Involved in immunoglobulin class switching.  
Release of soluble CD40L from platelets is partially regulated by GP IIb/IIIa, actin polymerization, and an matrix metalloproteinases (MMP) inhibitor-sensitive pathway.

### Tissue specificity

Specifically expressed on activated CD4+ T-lymphocytes.

### Involvement in disease

Defects in CD40LG are the cause of X-linked immunodeficiency with hyper-IgM type 1 (HIGM1) [MIM:308230]; also known as X-linked hyper IgM syndrome (XHIM). HIGM1 is an immunoglobulin isotype switch defect characterized by elevated concentrations of serum IgM and decreased amounts of all other isotypes. Affected males present at an early age (usually within the first year of life) recurrent bacterial and opportunistic infections, including Pneumocystis carinii pneumonia and intractable diarrhea due to cryptosporidium infection. Despite substitution treatment with intravenous immunoglobulin, the overall prognosis is rather poor, with a death rate of about 10% before adolescence.

### Sequence similarities

Belongs to the tumor necrosis factor family.

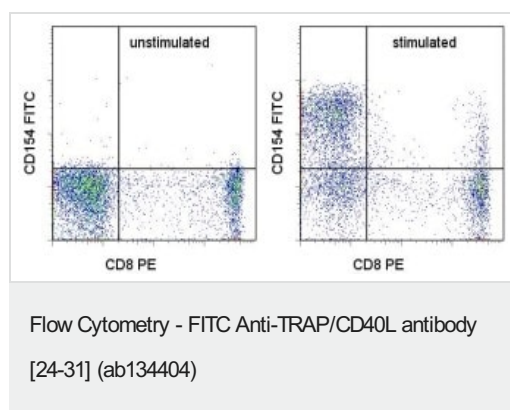
### Post-translational modifications

The soluble form derives from the membrane form by proteolytic processing.  
N-linked glycan is a mixture of high mannose and complex type. Glycan structure does not influence binding affinity to CD40.  
Not O-glycosylated.

### Cellular localization

Secreted and Cell membrane.

## Images



Flow cytometry analysis of Human peripheral blood cells unstimulated (left) or stimulated for 5 hours with Cell Stimulation Cocktail (500X) (right) with Anti-Human CD8a PE and ab134404 at 5 µL (1.0 µg)/test. Total viable cells were used for analysis.

**Please note:** All products are "FOR RESEARCH USE ONLY. NOT FOR USE IN DIAGNOSTIC PROCEDURES"

### **Our Abpromise to you: Quality guaranteed and expert technical support**

---

- Replacement or refund for products not performing as stated on the datasheet
- Valid for 12 months from date of delivery
- Response to your inquiry within 24 hours
  
- We provide support in Chinese, English, French, German, Japanese and Spanish
- Extensive multi-media technical resources to help you
- We investigate all quality concerns to ensure our products perform to the highest standards

If the product does not perform as described on this datasheet, we will offer a refund or replacement. For full details of the Abpromise, please visit <https://www.abcam.com/abpromise> or contact our technical team.

### **Terms and conditions**

---

- Guarantee only valid for products bought direct from Abcam or one of our authorized distributors