


Product datasheet

Anti-FKBP25 antibody ab16654

★★★★★ [7 Abreviews](#) [7 References](#) [3 Images](#)

Overview

Product name	Anti-FKBP25 antibody
Description	Rabbit polyclonal to FKBP25
Host species	Rabbit
Tested applications	Suitable for: WB
Species reactivity	Reacts with: Mouse, Rat, Human Predicted to work with: Rabbit, Hamster, Cow, Monkey, African green monkey 
Immunogen	Synthetic peptide conjugated to KLH derived from within residues 1 - 100 of Human FKBP25. Read Abcam's proprietary immunogen policy (Peptide available as ab16979 .)
General notes	<p>The Life Science industry has been in the grips of a reproducibility crisis for a number of years. Abcam is leading the way in addressing this with our range of recombinant monoclonal antibodies and knockout edited cell lines for gold-standard validation. Please check that this product meets your needs before purchasing.</p> <p>If you have any questions, special requirements or concerns, please send us an inquiry and/or contact our Support team ahead of purchase. Recommended alternatives for this product can be found below, along with publications, customer reviews and Q&As</p>

Properties

Form	Liquid
Storage instructions	Shipped at 4°C. Store at +4°C short term (1-2 weeks). Upon delivery aliquot. Store at -20°C or -80°C. Avoid freeze / thaw cycle.
Storage buffer	pH: 7.40 Preservative: 0.02% Sodium azide Constituent: PBS Batches of this product that have a concentration < 1mg/ml may have BSA added as a stabilising agent. If you would like information about the formulation of a specific lot, please contact our scientific support team who will be happy to help.
Purity	Immunogen affinity purified
Clonality	Polyclonal
Isotype	IgG

Applications

The Abpromise guarantee

Our **Abpromise guarantee** covers the use of ab16654 in the following tested applications.

The application notes include recommended starting dilutions; optimal dilutions/concentrations should be determined by the end user.

Application	Abreviews	Notes
WB	★★★★★ (5)	Use a concentration of 0.05 - 1 µg/ml. Detects a band of approximately 28 kDa (predicted molecular weight: 25 kDa).

Target

Function

FK506- and rapamycin-binding proteins (FKBPs) constitute a family of receptors for the two immunosuppressants which inhibit T-cell proliferation by arresting two distinct cytoplasmic signal transmission pathways. PPLases accelerate the folding of proteins.

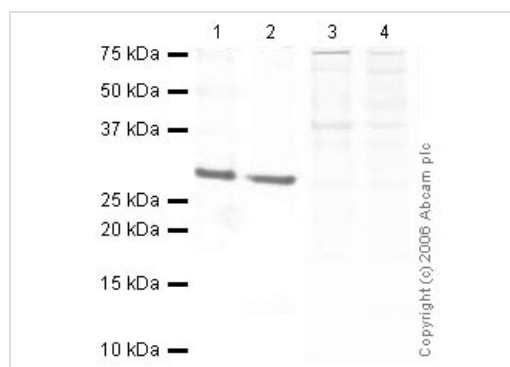
Sequence similarities

Belongs to the FKBP-type PPLase family.
Contains 1 PPLase FKBP-type domain.

Cellular localization

Nucleus.

Images



Western blot - Anti-FKBP25 antibody (ab16654)

All lanes : Anti-FKBP25 antibody (ab16654) at 1 µg/ml

Lane 1 : HeLa Whole Cell Lysate

Lane 2 : HeLa Nuclear Lysate

Lane 3 : HeLa Whole Cell Lysate with Human FKBP25 peptide (**ab16979**) at 1 µg/ml

Lane 4 : HeLa Nuclear Lysate with Human FKBP25 peptide (**ab16979**) at 1 µg/ml

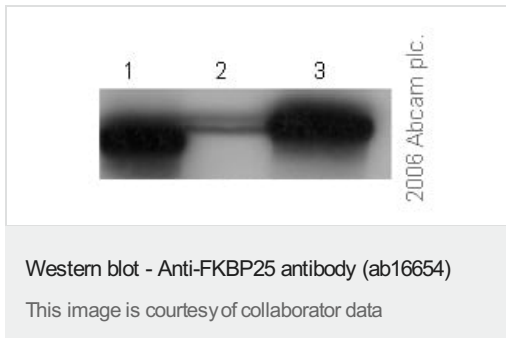
Lysates/proteins at 20 µg per lane.

Secondary

All lanes : Goat polyclonal to Rabbit IgG (Alexa Fluor® 680) at 1/10000 dilution

Predicted band size: 25 kDa

Observed band size: 28 kDa



All lanes : Anti-FKBP25 antibody (ab16654) at 0.05 µg/ml

Lane 1 : HeLa nuclear extracts

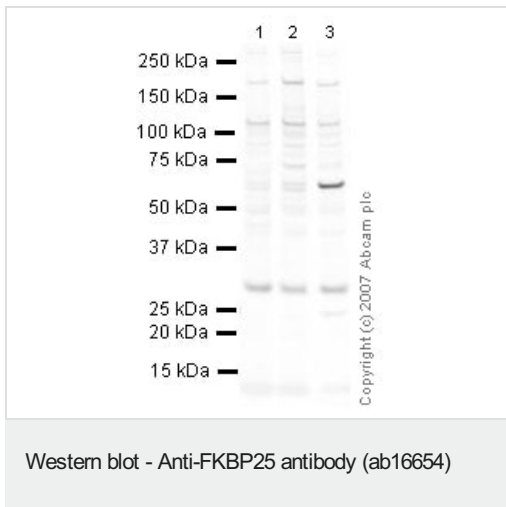
Lane 2 : HeLa nuclear extracts with Human FKBP25 peptide (**ab16979**) at 1 µg/ml

Lane 3 : HeLa nuclear extracts with Human FKBP25 peptide (**ab16980**) at 1 µg/ml

Lysates/proteins at 20 µg per lane.

Predicted band size: 25 kDa

ab16654 specifically recognises FKBP25 (lane1), which can be blocked using the N-terminal immunizing peptide (lane2) but not the corresponding C-terminal peptide (lane3).



All lanes : Anti-FKBP25 antibody (ab16654) at 1 µg/ml

Lane 1 : NIH/3T3 whole cell lysate (**ab7179**)

Lane 2 : MEF1 (Mouse embryonic fibroblast cell line) Whole Cell Lysate

Lane 3 : PC12 (Rat adrenal pheochromocytoma cell line) Whole Cell Lysate

Lysates/proteins at 10 µg per lane.

Secondary

All lanes : IRDye 680 Conjugated Goat Anti-Rabbit IgG (H+L) at 1/10000 dilution

Performed under reducing conditions.

Predicted band size: 25 kDa

Observed band size: 28 kDa

Additional bands at: 58 kDa. We are unsure as to the identity of these extra bands.

Our Abpromise to you: Quality guaranteed and expert technical support

- Replacement or refund for products not performing as stated on the datasheet
- Valid for 12 months from date of delivery
- Response to your inquiry within 24 hours

- We provide support in Chinese, English, French, German, Japanese and Spanish
- Extensive multi-media technical resources to help you
- We investigate all quality concerns to ensure our products perform to the highest standards

If the product does not perform as described on this datasheet, we will offer a refund or replacement. For full details of the Abpromise, please visit <https://www.abcam.com/abpromise> or contact our technical team.

Terms and conditions

- Guarantee only valid for products bought direct from Abcam or one of our authorized distributors