



Product datasheet

Anti-FKBP51 antibody ab2901

★★★★★ [2 Abreviews](#) [19 References](#) [3 Images](#)

Overview

Product name	Anti-FKBP51 antibody
Description	Rabbit polyclonal to FKBP51
Host species	Rabbit
Tested applications	Suitable for: WB
Species reactivity	Reacts with: Rat, Human
Immunogen	Synthetic peptide corresponding to Human FKBP51 aa 394-407. Sequence: CQKKAKEHNERDRR Database link: Q13451 (Peptide available as ab4924)  Run BLAST with  Run BLAST with
Positive control	WB: K562, HepG2, PC3, HeLa and MCF7 cell lysates; PC-12 and L6 cell lysates; Rat liver, brain, testis and kidney tissue lysates.
General notes	<p>The Life Science industry has been in the grips of a reproducibility crisis for a number of years. Abcam is leading the way in addressing this with our range of recombinant monoclonal antibodies and knockout edited cell lines for gold-standard validation. Please check that this product meets your needs before purchasing.</p> <p>If you have any questions, special requirements or concerns, please send us an inquiry and/or contact our Support team ahead of purchase. Recommended alternatives for this product can be found below, along with publications, customer reviews and Q&As</p>

Properties

Form	Liquid
Storage instructions	Shipped at 4°C. Store at +4°C short term (1-2 weeks). Upon delivery aliquot. Store at -20°C or -80°C. Avoid freeze / thaw cycle.
Storage buffer	Preservative: 0.05% Sodium azide Constituents: 0.1% BSA, PBS
Purity	Immunogen affinity purified
Clonality	Polyclonal

Isotype

IgG

Applications

The Abpromise guarantee

Our **Abpromise guarantee** covers the use of ab2901 in the following tested applications.

The application notes include recommended starting dilutions; optimal dilutions/concentrations should be determined by the end user.

Application	Abreviews	Notes
WB	★★★★★ (2)	Use a concentration of 1 µg/ml. Detects a band of approximately 51 kDa.

Target

Function

Interacts with functionally mature heterooligomeric progesterone receptor complexes along with HSP90 and TEBP.

Tissue specificity

Widely expressed, enriched in testis compared to other tissues.

Sequence similarities

Contains 2 PPlase FKBP-type domains.

Contains 3 TPR repeats.

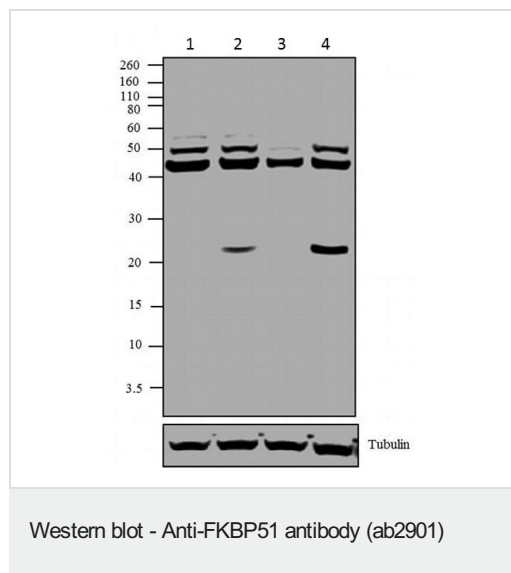
Post-translational modifications

Phosphorylated upon DNA damage, probably by ATM or ATR.

Cellular localization

Cytoplasm. Nucleus.

Images



All lanes : Anti-FKBP51 antibody (ab2901) at 2 µg/ml

Lane 1 : K562 (human chronic myelogenous leukemia cell line from bone marrow) nuclear enriched extract

Lane 2 : HepG2 (human liver hepatocellular carcinoma cell line) nuclear enriched extract

Lane 3 : PC-3 (human prostate adenocarcinoma cell line) nuclear enriched extract

Lane 4 : MCF7 (human breast adenocarcinoma cell line) nuclear enriched extract

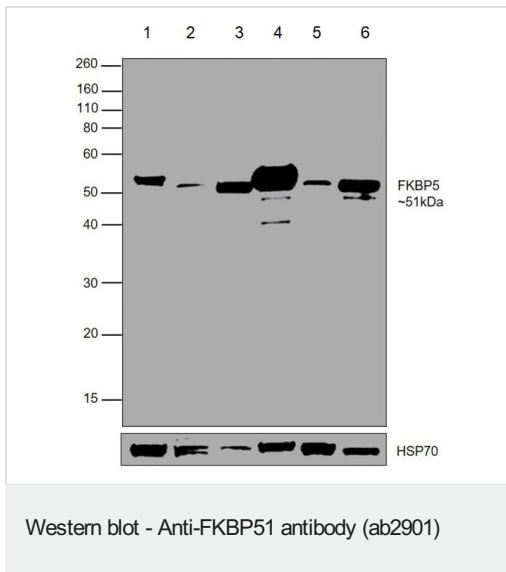
Lysates/proteins at 30 µg per lane.

Secondary

All lanes : Goat anti-Rabbit IgG (H+L) at 1/2500 dilution

Approximately 51 and 45 kDa bands corresponding to FKBP51

were observed across cell lines tested



All lanes : Anti-FKBP51 antibody (ab2901) at 1 µg/ml

Lane 1 : PC-12 (Rat adrenal gland pheochromocytoma cell line) whole cell lysate

Lane 2 : L6 (Rat skeletal muscle cell line) whole cell lysate

Lane 3 : Rat liver tissue lysate

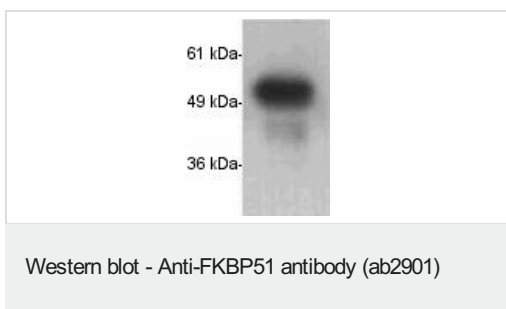
Lane 4 : Rat brain tissue lysate

Lane 5 : Rat testis tissue lysate

Lane 6 : Rat kidney tissue lysate

Lysates/proteins at 30 µg per lane.

Western blot was performed using ab2901 and a 51kDa band corresponding to FKBP5 was observed across all the tested cell lines and tissues. Whole cell extracts were electrophoresed using NuPAGE™ 10% Bis-Tris Protein Gel . Resolved proteins were then transferred onto a Nitrocellulose membrane by iBlot® 2 Dry Blotting System. The blot was probed with the primary antibody (1µg/mL) and detected by chemiluminescence with Goat anti-Rabbit IgG (H+L) Superclonal™ Recombinant Secondary Antibody, HRP using the iBright FL 1000. Chemiluminescent detection was performed using Novex® ECL Reagent Kit.



Anti-FKBP51 antibody (ab2901) at 2 µg/ml + HeLa (human epithelial cell line from cervix adenocarcinoma) cell lysate

Please note: All products are "FOR RESEARCH USE ONLY. NOT FOR USE IN DIAGNOSTIC PROCEDURES"

Our Abpromise to you: Quality guaranteed and expert technical support

- Replacement or refund for products not performing as stated on the datasheet
- Valid for 12 months from date of delivery
- Response to your inquiry within 24 hours
- We provide support in Chinese, English, French, German, Japanese and Spanish
- Extensive multi-media technical resources to help you

- We investigate all quality concerns to ensure our products perform to the highest standards

If the product does not perform as described on this datasheet, we will offer a refund or replacement. For full details of the Abpromise, please visit <https://www.abcam.com/abpromise> or contact our technical team.

Terms and conditions

- Guarantee only valid for products bought direct from Abcam or one of our authorized distributors