


Product datasheet

Anti-FKBP52 antibody ab264203

2 Images

Overview

Product name	Anti-FKBP52 antibody
Description	Rabbit polyclonal to FKBP52
Host species	Rabbit
Tested applications	Suitable for: IHC-P, WB
Species reactivity	Reacts with: Mouse, Human Predicted to work with: Rat, Rabbit, Cow 
Immunogen	Synthetic peptide within Human FKBP52 aa 1-50. The exact sequence is proprietary. Database link: Q02790
Positive control	WB: HeLa, HEK-293T and NIH/3T3 whole cell lysates; IHC-P: Human prostate carcinoma tissue.
General notes	<p>The Life Science industry has been in the grips of a reproducibility crisis for a number of years. Abcam is leading the way in addressing this with our range of recombinant monoclonal antibodies and knockout edited cell lines for gold-standard validation. Please check that this product meets your needs before purchasing.</p> <p>If you have any questions, special requirements or concerns, please send us an inquiry and/or contact our Support team ahead of purchase. Recommended alternatives for this product can be found below, along with publications, customer reviews and Q&As</p>

Properties

Form	Liquid
Storage instructions	Shipped at 4°C. Store at +4°C short term (1-2 weeks). Upon delivery aliquot. Store at -20°C. Avoid freeze / thaw cycle.
Storage buffer	pH: 6.8 Preservative: 0.09% Sodium azide Constituents: Tris buffered saline, 0.1% BSA
Purity	Immunogen affinity purified
Clonality	Polyclonal
Isotype	IgG

Applications

The Abpromise guarantee

Our **Abpromise guarantee** covers the use of ab264203 in the following tested applications.

The application notes include recommended starting dilutions; optimal dilutions/concentrations should be determined by the end user.

Application	Abreviews	Notes
IHC-P		1/200 - 1/1000. Perform heat mediated antigen retrieval with citrate buffer pH 6 before commencing with IHC staining protocol.
WB		1/2000 - 1/10000.

Target

Function

Immunophilin protein with PPlase and co-chaperone activities (By similarity). Component of unliganded steroid receptors heterocomplexes through interaction with heat-shock protein 90 (HSP90). May play a role in the intracellular trafficking of heterooligomeric forms of steroid hormone receptors between cytoplasm and nuclear compartments (By similarity). The isomerase activity controls neuronal growth cones via regulation of TRPC1 channel opening. Acts also as a regulator of microtubule dynamics by inhibiting MAPT/TAU ability to promote microtubule assembly.

Tissue specificity

Widely expressed.

Sequence similarities

Contains 2 PPlase FKBP-type domains.
Contains 3 TPR repeats.

Domain

The PPlase activity is mainly due to the first PPlase FKBP-type domain (1-138 AA).
The C-terminal region (AA 375-458) is required to prevent tubulin polymerization.
The chaperone activity resides in the C-terminal region, mainly between amino acids 264 and 400.

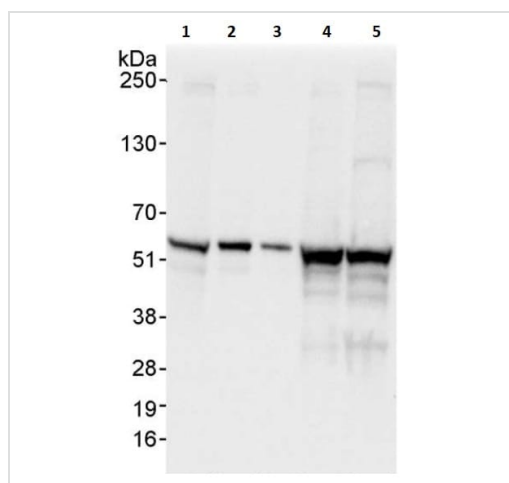
Post-translational modifications

Phosphorylation by CK2 results in loss of HSP90 binding activity (By similarity). Phosphorylated upon DNA damage, probably by ATM or ATR.

Cellular localization

Cytoplasm > cytosol. Nucleus. Cytoplasm > cytoskeleton.

Images



Western blot - Anti-FKBP52 antibody (ab264203)

All lanes : Anti-FKBP52 antibody (ab264203) at 0.04 µg/ml

Lane 1 : HeLa whole cell lysate at 50 µg

Lane 2 : HeLa whole cell lysate at 15 µg

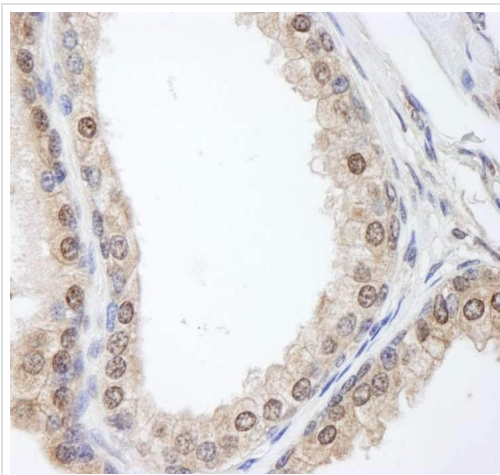
Lane 3 : HeLa whole cell lysate at 5 µg

Lane 4 : HEK-293T whole cell lysate at 50 µg

Lane 5 : NIH/3T3 whole cell lysate at 50 µg

Detected with chemiluminescence with exposure time of 1 second.

4-20% SDS-PAGE.



Immunohistochemistry (Formalin/PFA-fixed paraffin-embedded sections) - Anti-FKBP52 antibody (ab264203)

Immunohistochemical analysis of formalin-fixed, paraffin-embedded human prostate carcinoma tissue labeling FKBP52 with ab264203 at 1/1,000 dilution. Detection: DAB.

Please note: All products are "FOR RESEARCH USE ONLY. NOT FOR USE IN DIAGNOSTIC PROCEDURES"

Our Abpromise to you: Quality guaranteed and expert technical support

- Replacement or refund for products not performing as stated on the datasheet
- Valid for 12 months from date of delivery
- Response to your inquiry within 24 hours
- We provide support in Chinese, English, French, German, Japanese and Spanish
- Extensive multi-media technical resources to help you
- We investigate all quality concerns to ensure our products perform to the highest standards

If the product does not perform as described on this datasheet, we will offer a refund or replacement. For full details of the Abpromise, please visit <https://www.abcam.com/abpromise> or contact our technical team.

Terms and conditions

- Guarantee only valid for products bought direct from Abcam or one of our authorized distributors