

## Product datasheet

# Anti-FKSG14/p33 antibody ab236739

[1 References](#) [4 Images](#)

### Overview

---

<b>Product name</b>	Anti-FKSG14/p33 antibody
<b>Description</b>	Rabbit polyclonal to FKSG14/p33
<b>Host species</b>	Rabbit
<b>Tested applications</b>	<b>Suitable for:</b> IP, IHC-P, WB
<b>Species reactivity</b>	<b>Reacts with:</b> Human
<b>Immunogen</b>	Recombinant full length protein corresponding to Human FKSG14/p33 aa 1 to the C-terminus. Database link: <a href="#">Q9BS16</a>

 [Run BLAST with](#)

 [Run BLAST with](#)

**Positive control** WB: PC-3 and HEK-293T whole cell lysates. IHC-P: Human skin and liver tissue.

### General notes

The Life Science industry has been in the grips of a reproducibility crisis for a number of years. Abcam is leading the way in addressing this with our range of recombinant monoclonal antibodies and knockout edited cell lines for gold-standard validation. Please check that this product meets your needs before purchasing.

If you have any questions, special requirements or concerns, please send us an inquiry and/or contact our Support team ahead of purchase. Recommended alternatives for this product can be found below, along with publications, customer reviews and Q&As

### Properties

---

<b>Form</b>	Liquid
<b>Storage instructions</b>	Shipped at 4°C. Store at +4°C short term (1-2 weeks). Upon delivery aliquot. Store at -20°C long term. Avoid freeze / thaw cycle.
<b>Storage buffer</b>	pH: 7.30 Preservative: 0.02% Sodium azide Constituents: 50% Glycerol (glycerin, glycerine), PBS
<b>Purity</b>	Immunogen affinity purified
<b>Clonality</b>	Polyclonal
<b>Isotype</b>	IgG

### Applications

---

## The Abpromise guarantee

Our **Abpromise guarantee** covers the use of ab236739 in the following tested applications.

The application notes include recommended starting dilutions; optimal dilutions/concentrations should be determined by the end user.

Application	Abreviews	Notes
IP		Use at an assay dependent concentration.
IHC-P		1/20 - 1/200.
WB		1/1000 - 1/5000. Predicted molecular weight: 32 kDa.

## Target

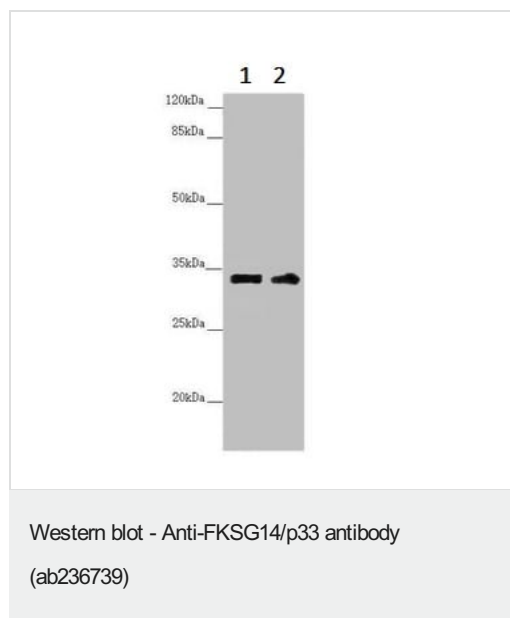
### Relevance

FKSG14 / p33, also known as CENPK (centromere protein K) is a component of the CENPA-CAD (nucleosome distal) complex. It may be involved in incorporation of CENPA into centromeres and is required for proper kinetochore function, mitotic progression and chromosome segregation. May be involved in incorporation of newly synthesized CENPA into centromeres via its interaction with the CENPA-NAC complex. Acts in coordination with CASC5/KNL1 to recruit the NDC80 complex to the outer kinetochore. FKSG14 / p33 constitutively localized to centromeres throughout the cell cycle. There are 3 isoforms produced by alternative splicing.

### Cellular localization

Nuclear. Centromere. Kinetochore. Localizes exclusively in the centromeres.

## Images



**All lanes** : Anti-FKSG14/p33 antibody (ab236739) at 1/1000 dilution

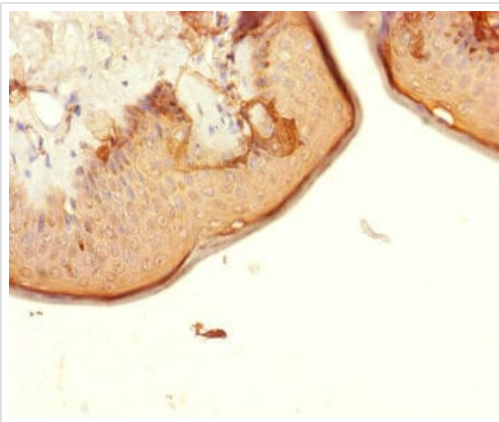
**Lane 1** : PC-3 (Human prostate adenocarcinoma cell line) whole cell lysate

**Lane 2** : HEK-293T (Human epithelial cell line from embryonic kidney transformed with large T antigen) whole cell lysate

### Secondary

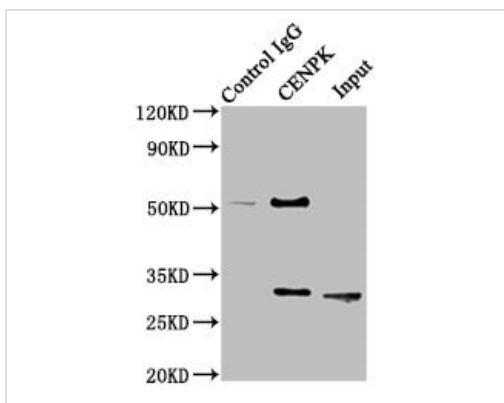
**All lanes** : Goat polyclonal to rabbit IgG at 1/10000 dilution

**Predicted band size:** 32 kDa



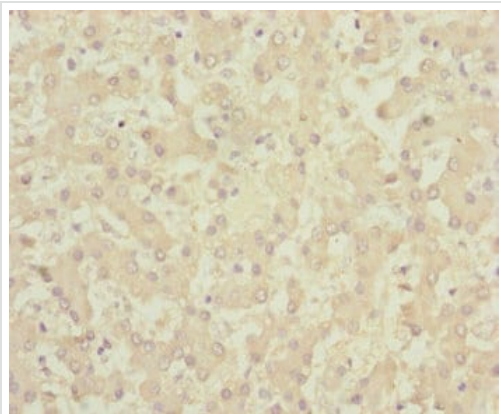
Immunohistochemistry (Formalin/PFA-fixed paraffin-embedded sections) - Anti-FKSG14/p33 antibody (ab236739)

Paraffin-embedded human skin tissue stained for FKSG14/p33 using ab236739 at 1/100 dilution in immunohistochemical analysis.



Immunoprecipitation - Anti-FKSG14/p33 antibody (ab236739)

Immunoprecipitating FKSG14/p33 in HeLa whole cell lysate  
Lane 1: Rabbit control IgG instead of ab236739 in HeLa whole cell lysate. For western blotting, a HRP-conjugated Protein G antibody was used as the secondary antibody (1/2000)  
Lane 2: ab236739 (8µg) + HeLa whole cell lysate (500µg)  
Lane 3: HeLa whole cell lysate (10µg)



Paraffin-embedded human liver tissue stained for FKSG14/p33 using ab236739 at 1/100 dilution in immunohistochemical analysis.

Immunohistochemistry (Formalin/PFA-fixed paraffin-embedded sections) - Anti-FKSG14/p33 antibody (ab236739)

**Please note:** All products are "FOR RESEARCH USE ONLY. NOT FOR USE IN DIAGNOSTIC PROCEDURES"

### **Our Abpromise to you: Quality guaranteed and expert technical support**

---

- Replacement or refund for products not performing as stated on the datasheet
- Valid for 12 months from date of delivery
- Response to your inquiry within 24 hours
- We provide support in Chinese, English, French, German, Japanese and Spanish
- Extensive multi-media technical resources to help you
- We investigate all quality concerns to ensure our products perform to the highest standards

If the product does not perform as described on this datasheet, we will offer a refund or replacement. For full details of the Abpromise, please visit <https://www.abcam.com/abpromise> or contact our technical team.

### **Terms and conditions**

---

- Guarantee only valid for products bought direct from Abcam or one of our authorized distributors