

Product datasheet

Anti-FLI1 antibody [EPR4646] ab133485

Recombinant RabMAb

[1 Abreviews](#) [24 References](#) [8 Images](#)

Overview

Product name	Anti-FLI1 antibody [EPR4646]
Description	Rabbit monoclonal [EPR4646] to FLI1
Host species	Rabbit
Specificity	This antibody does not cross-react with ERG.
Tested applications	Suitable for: IHC-P, WB Unsuitable for: Flow Cyt, ICC/IF or IP
Species reactivity	Reacts with: Mouse, Human
Immunogen	Synthetic peptide within Human FLI1 aa 350-450. The exact sequence is proprietary. (Peptide available as ab187137)
Positive control	U937, Jurkat, Raw264.7 and HL-60 cell lysates; Human Ewing sarcoma tissue; FLI1 recombinant protein
General notes	<p>This product is a recombinant monoclonal antibody, which offers several advantages including:</p> <ul style="list-style-type: none">- High batch-to-batch consistency and reproducibility- Improved sensitivity and specificity- Long-term security of supply- Animal-free production <p>For more information see here.</p> <p>Our RabMAb[®] technology is a patented hybridoma-based technology for making rabbit monoclonal antibodies. For details on our patents, please refer to RabMAb[®] patents.</p>

Properties

Form	Liquid
Storage instructions	Shipped at 4°C. Store at +4°C short term (1-2 weeks). Upon delivery aliquot. Store at -20°C. Stable for 12 months at -20°C.
Storage buffer	pH: 7.2 Preservative: 0.01% Sodium azide Constituents: 40% Glycerol (glycerin, glycerine), 0.05% BSA, 59% PBS
Purity	Protein A purified
Clonality	Monoclonal

Clone number EPR4646
Isotype IgG

Applications

The Abpromise guarantee Our **Abpromise guarantee** covers the use of ab133485 in the following tested applications. The application notes include recommended starting dilutions; optimal dilutions/concentrations should be determined by the end user.

Application	Abreviews	Notes
IHC-P		1/700. Perform heat mediated antigen retrieval before commencing with IHC staining protocol. See IHC antigen retrieval protocols . For unpurified, use 1/140.
WB		1/1000. Predicted molecular weight: 51 kDa. For unpurified, use 1/200.

Application notes Is unsuitable for Flow Cyt, ICC/IF or IP.

Target

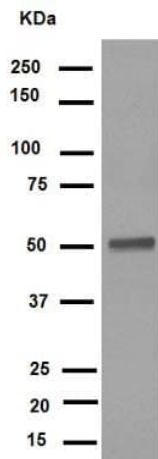
Function Sequence-specific transcriptional activator. Recognizes the DNA sequence 5'-C[CA]GGAAGT-3'.

Involvement in disease Defects in FLI1 are a cause of Ewing sarcoma (ES) [MIM:612219]. A highly malignant, metastatic, primitive small round cell tumor of bone and soft tissue that affects children and adolescents. It belongs to the Ewing sarcoma family of tumors, a group of morphologically heterogeneous neoplasms that share the same cytogenetic features. They are considered neural tumors derived from cells of the neural crest. Ewing sarcoma represents the less differentiated form of the tumors. Note=A chromosomal aberration involving FLI1 is found in patients with Erwing sarcoma. Translocation t(11;22)(q24;q12) with EWSR1.

Sequence similarities Belongs to the ETS family.
Contains 1 ETS DNA-binding domain.
Contains 1 PNT (pointed) domain.

Cellular localization Nucleus.

Images



Western blot - Anti-FLI1 antibody [EPR4646] (ab133485)

Anti-FLI1 antibody [EPR4646] (ab133485) at 1/1000 dilution (purified) + Jurkat cell lysate at 10 µg

Secondary

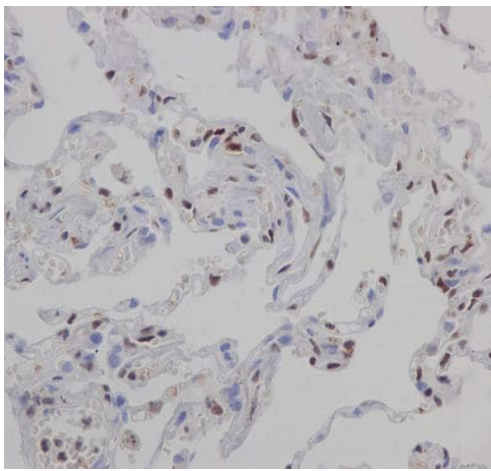
HRP goat anti-rabbit at 1/1000 dilution

Predicted band size: 51 kDa

Observed band size: 51 kDa

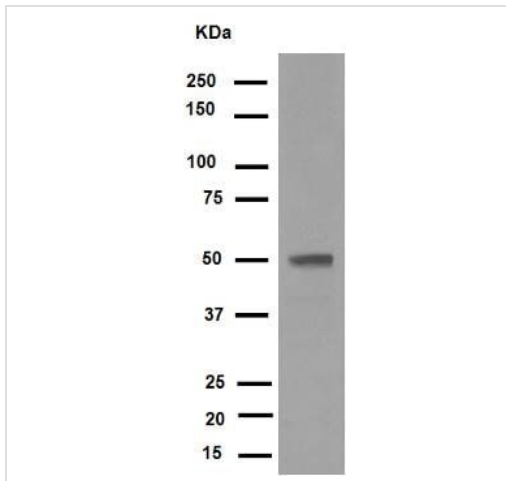
Blocking buffer: 5% NFDm/TBST

Dilution buffer: 5% NFDm/TBST



Immunohistochemistry (Formalin/PFA-fixed paraffin-embedded sections) - Anti-FLI1 antibody [EPR4646] (ab133485)

Immunohistochemical staining of paraffin embedded human lung with purified ab133485 at a working dilution of 1 in 700. The secondary antibody used is a HRP polymer for rabbit IgG. The sample is counter-stained with hematoxylin. Antigen retrieval was performed using Tris-EDTA buffer, pH 9.0.



Western blot - Anti-FLI1 antibody [EPR4646]
(ab133485)

Anti-FLI1 antibody [EPR4646] (ab133485) at 1/200 dilution
(unpurified) + Jurkat cell lysate at 10 µg

Secondary

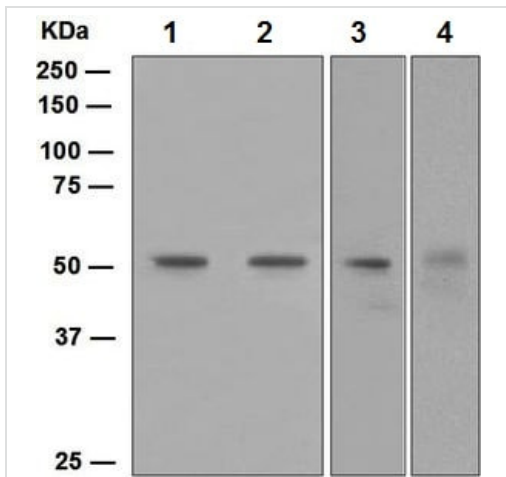
HRP goat anti-rabbit (H+L) at 1/1000 dilution

Predicted band size: 51 kDa

Observed band size: 51 kDa

Blocking buffer: 5% NFDm/TBST

Dilution buffer: 5% NFDm/TBST



Western blot - Anti-FLI1 antibody [EPR4646]
(ab133485)

All lanes : Anti-FLI1 antibody [EPR4646] (ab133485) at 1/1000 dilution (unpurified)

Lane 1 : U937 cell lysate

Lane 2 : Jurkat cell lysate

Lane 3 : Raw264.7 cell lysate

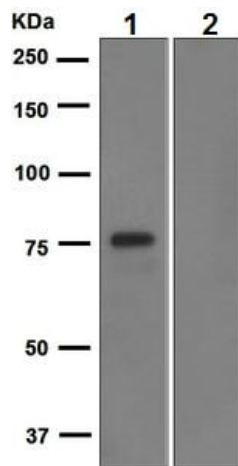
Lane 4 : HL-60 cell lysate

Lysates/proteins at 10 µg per lane.

Secondary

All lanes : HRP labelled goat anti-rabbit at 1/2000 dilution

Predicted band size: 51 kDa



Western blot - Anti-FLI1 antibody [EPR4646] (ab133485)

All lanes : Anti-FLI1 antibody [EPR4646] (ab133485) at 1/1000 dilution (unpurified)

Lane 1 : FLI1 recombinant protein

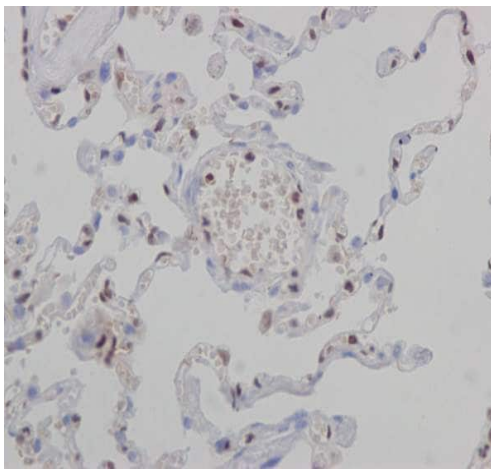
Lane 2 : ERG recombinant protein

Lysates/proteins at 0.01 µg per lane.

Secondary

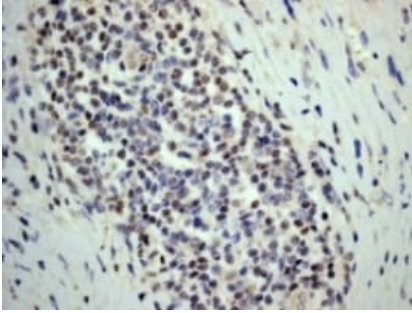
All lanes : HRP labelled goat anti-rabbit at 1/2000 dilution

Predicted band size: 51 kDa



Immunohistochemistry (Formalin/PFA-fixed paraffin-embedded sections) - Anti-FLI1 antibody [EPR4646] (ab133485)

Immunohistochemical staining of paraffin embedded human lung with unpurified ab133485 at a working dilution of 1 in 140. The secondary antibody used is a HRP polymer for rabbit IgG. The sample is counter-stained with hematoxylin. Antigen retrieval was performed using Tris-EDTA buffer, pH 9.0.

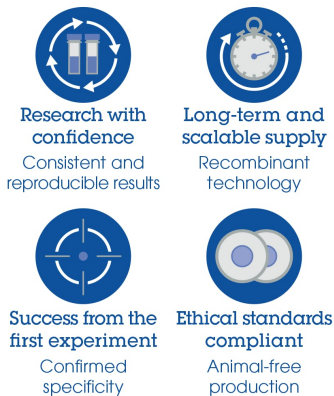


Immunohistochemistry (Formalin/PFA-fixed paraffin-embedded sections) - Anti-FLI1 antibody [EPR4646] (ab133485)

Immunohistochemical analysis of paraffin-embedded Human Ewing sarcoma tissue labelled with unpurified ab133485 at 1/250 dilution.

Perform heat mediated antigen retrieval before commencing with IHC staining protocol.

Why choose a recombinant antibody?



Anti-FLI1 antibody [EPR4646] (ab133485)

Please note: All products are "FOR RESEARCH USE ONLY. NOT FOR USE IN DIAGNOSTIC PROCEDURES"

Our Abpromise to you: Quality guaranteed and expert technical support

- Replacement or refund for products not performing as stated on the datasheet
- Valid for 12 months from date of delivery
- Response to your inquiry within 24 hours
- We provide support in Chinese, English, French, German, Japanese and Spanish
- Extensive multi-media technical resources to help you
- We investigate all quality concerns to ensure our products perform to the highest standards

If the product does not perform as described on this datasheet, we will offer a refund or replacement. For full details of the Abpromise,

please visit <https://www.abcam.com/abpromise> or contact our technical team.

Terms and conditions

- Guarantee only valid for products bought direct from Abcam or one of our authorized distributors