



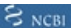


Product datasheet

Anti-Flotillin 2/ESA antibody ab113661

3 Images

Overview

Product name	Anti-Flotillin 2/ESA antibody
Description	Goat polyclonal to Flotillin 2/ESA
Host species	Goat
Tested applications	Suitable for: WB, IHC-P
Species reactivity	Reacts with: Human Predicted to work with: Cow, Dog 
Immunogen	Synthetic peptide corresponding to Human Flotillin 2/ESA aa 400-500 (C terminal).  Run BLAST with   Run BLAST with 
Positive control	Human Kidney and Human Tonsil tissue. Human Brain (Cerebellum) lysate
General notes	<p>The Life Science industry has been in the grips of a reproducibility crisis for a number of years. Abcam is leading the way in addressing this with our range of recombinant monoclonal antibodies and knockout edited cell lines for gold-standard validation. Please check that this product meets your needs before purchasing.</p> <p>If you have any questions, special requirements or concerns, please send us an inquiry and/or contact our Support team ahead of purchase. Recommended alternatives for this product can be found below, along with publications, customer reviews and Q&As</p>

Properties

Form	Liquid
Storage instructions	Shipped at 4°C. Upon delivery aliquot. Store at -20°C or -80°C. Avoid freeze / thaw cycle.
Storage buffer	pH: 7.3 Preservative: 0.02% Sodium azide Constituents: Tris buffered saline, 0.5% BSA
Purity	Immunogen affinity purified
Clonality	Polyclonal
Isotype	IgG

Applications

The Abpromise guarantee

Our **Abpromise guarantee** covers the use of ab113661 in the following tested applications.

The application notes include recommended starting dilutions; optimal dilutions/concentrations should be determined by the end user.

Application	Abreviews	Notes
WB		Use a concentration of 0.1 - 0.3 µg/ml. Predicted molecular weight: 47 kDa.
IHC-P		Use a concentration of 3.75 µg/ml.

Target

Function

May act as a scaffolding protein within caveolar membranes, functionally participating in formation of caveolae or caveolae-like vesicles. May be involved in epidermal cell adhesion and epidermal structure and function.

Tissue specificity

In skin, expressed in epidermis and epidermal appendages but not in dermis. Expressed in all layers of the epidermis except the basal layer. In hair follicles, expressed in the suprabasal layer but not the basal layer. Also expressed in melanoma and carcinoma cell lines, fibroblasts and foreskin melanocytes.

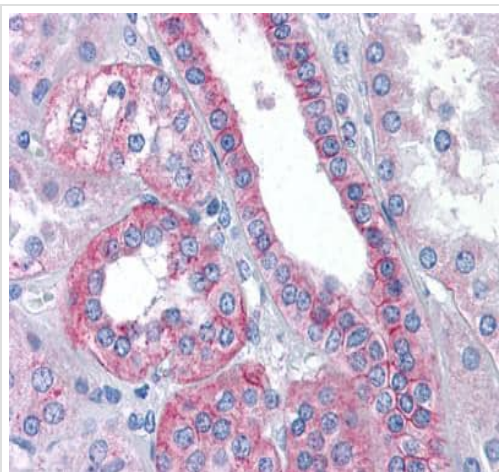
Sequence similarities

Belongs to the band 7/mec-2 family. Flotillin subfamily.

Cellular localization

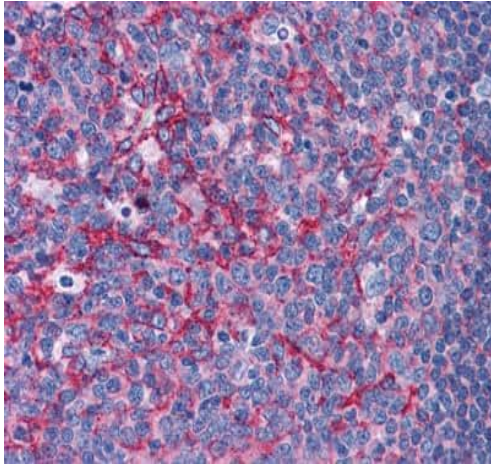
Cell membrane. Membrane > caveola. Endosome. Membrane-associated protein of caveolae.

Images



Immunohistochemistry analysis of formalin-fixed, paraffin-embedded Human Kidney with ab113661 at 3.75ug/ml

Immunohistochemistry (Formalin/PFA-fixed paraffin-embedded sections) - Anti-Flotillin 2/ESA antibody (ab113661)



Immunohistochemistry analysis of formalin-fixed, paraffin-embedded Human Tonsil with ab113661 at 3.75ug/ml

Immunohistochemistry (Formalin/PFA-fixed paraffin-embedded sections) - Anti-Flotillin 2/ESA antibody (ab113661)



Anti-Flotillin 2/ESA antibody (ab113661) at 0.1 µg/ml + Human Brain (Cerebellum) lysate at 35 µg/ml

Developed using the ECL technique.

Predicted band size: 47 kDa

Western blot - Anti-Flotillin 2/ESA antibody (ab113661)

Primary incubation was 1 hour.

Please note: All products are "FOR RESEARCH USE ONLY. NOT FOR USE IN DIAGNOSTIC PROCEDURES"

Our Abpromise to you: Quality guaranteed and expert technical support

- Replacement or refund for products not performing as stated on the datasheet
- Valid for 12 months from date of delivery
- Response to your inquiry within 24 hours
- We provide support in Chinese, English, French, German, Japanese and Spanish
- Extensive multi-media technical resources to help you
- We investigate all quality concerns to ensure our products perform to the highest standards

If the product does not perform as described on this datasheet, we will offer a refund or replacement. For full details of the Abpromise,

please visit <https://www.abcam.com/abpromise> or contact our technical team.

Terms and conditions

- Guarantee only valid for products bought direct from Abcam or one of our authorized distributors