

Anti-Flotillin 2/ESA antibody ab96507

★★★★★ [1 Abreviews](#) [6 References](#) [7 Images](#)

Overview

Product name	Anti-Flotillin 2/ESA antibody
Description	Rabbit polyclonal to Flotillin 2/ESA
Host species	Rabbit
Tested applications	Suitable for: WB, IHC-P, ICC/IF, IP
Species reactivity	Reacts with: Mouse, Rat, Human
Immunogen	Synthetic peptide corresponding to Human Flotillin 2/ESA aa 365-428 (C terminal). Database link: Q14254
Positive control	WB: HeLa. Mouse brain lysate. Rat brain lysate. IP: Human HeLa whole cell lysate. IHC-P: human lung cancer. ICC/IF: HeLa S3 cells.
General notes	<p>The Life Science industry has been in the grips of a reproducibility crisis for a number of years. Abcam is leading the way in addressing this with our range of recombinant monoclonal antibodies and knockout edited cell lines for gold-standard validation. Please check that this product meets your needs before purchasing.</p> <p>If you have any questions, special requirements or concerns, please send us an inquiry and/or contact our Support team ahead of purchase. Recommended alternatives for this product can be found below, along with publications, customer reviews and Q&As</p>

Properties

Form	Liquid
Storage instructions	Shipped at 4°C. Store at +4°C short term (1-2 weeks). Upon delivery aliquot. Store at -20°C or -80°C. Avoid freeze / thaw cycle.
Storage buffer	pH: 7.00 Preservative: 0.01% Thimerosal (merthiolate) Constituents: 79.99% PBS, 20% Glycerol (glycerin, glycerine)
Purity	Immunogen affinity purified
Clonality	Polyclonal
Isotype	IgG

Applications

The Abpromise guarantee

Our **Abpromise guarantee** covers the use of ab96507 in the following tested applications.

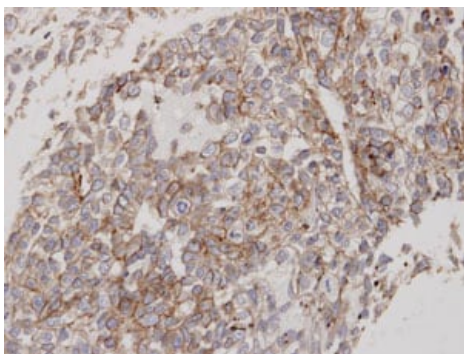
The application notes include recommended starting dilutions; optimal dilutions/concentrations should be determined by the end user.

Application	Abreviews	Notes
WB		1/500 - 1/3000. Predicted molecular weight: 47 kDa.
IHC-P		1/100 - 1/1000. Antigen retrieval is not essential but may optimise staining.
ICC/IF		1/100 - 1/1000.
IP	★★★★★ (1)	1/100 - 1/500.

Target

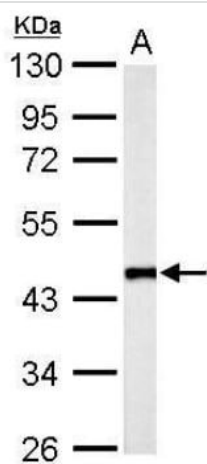
Function	May act as a scaffolding protein within caveolar membranes, functionally participating in formation of caveolae or caveolae-like vesicles. May be involved in epidermal cell adhesion and epidermal structure and function.
Tissue specificity	In skin, expressed in epidermis and epidermal appendages but not in dermis. Expressed in all layers of the epidermis except the basal layer. In hair follicles, expressed in the suprabasal layer but not the basal layer. Also expressed in melanoma and carcinoma cell lines, fibroblasts and foreskin melanocytes.
Sequence similarities	Belongs to the band 7/mec-2 family. Flotillin subfamily.
Cellular localization	Cell membrane. Membrane > caveola. Endosome. Membrane-associated protein of caveolae.

Images



Immunohistochemical analysis of paraffin-embedded human lung cancer using ab96507 at 1:100 dilution. Antigen Retrieval: Trilogy™ (EDTA based, pH 8.0) buffer, 15min.

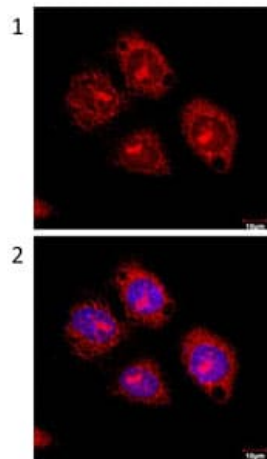
Immunohistochemistry (Formalin/PFA-fixed paraffin-embedded sections) - Anti-Flotillin 2/ESA antibody (ab96507)



Western blot - Anti-Flotillin 2/ESA antibody
(ab96507)

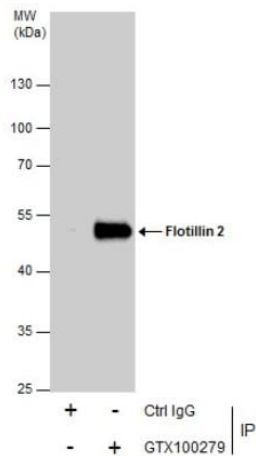
Anti-Flotillin 2/ESA antibody (ab96507) at 1/1000 dilution + Mouse brain lysate at 50 µg

Predicted band size: 47 kDa



Immunocytochemistry/ Immunofluorescence - Anti-Flotillin 2/ESA antibody (ab96507)

Immunofluorescence analysis of paraformaldehyde-fixed HeLa S3 cells, using ab96507 at 1:100 dilution. Image 2: Merged with DNA probe.

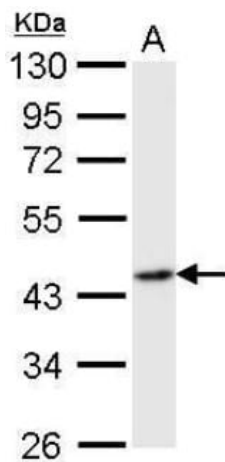


Immunoprecipitation - Anti-Flotillin 2/ESA antibody (ab96507)

Flotillin 2 was immunoprecipitated from 5µ of HeLa whole cell lysate with ab96507. Western blot was performed from the immunoprecipitate using ab96507. EasyBlot anti-Rabbit IgG, was used as secondary antibody.

Lane 1: HeLa lysate 5µg (Input).

Lane 2: ab96507 IP in HeLa lysate.

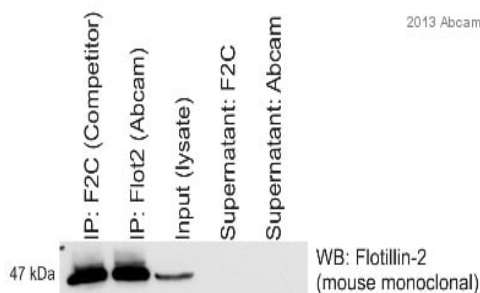


Western blot - Anti-Flotillin 2/ESA antibody (ab96507)

Anti-Flotillin 2/ESA antibody (ab96507) at 1/1000 dilution + Rat brain lysate at 50 µg

Predicted band size: 47 kDa

10% SDS-PAGE



Immunoprecipitation - Anti-Flotillin 2/ESA antibody (ab96507)

This image is courtesy of an Abreview submitted by Prof Ritva Tikkanen

Flotillin 2/ESA immunoprecipitation from Human HeLa whole cell lysate using ab96507. 750 µg of cell lysate was incubated with primary antibody (1/500) and matrix (Protein A) and incubated for 16 hours at 4°C.

Lane 1 : anti-Flotillin 2/ESA IP (using non-Abcam antibody)

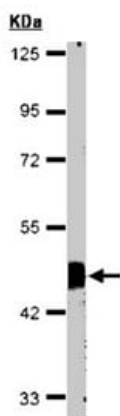
Lane 2 : anti-Flotillin 2/ESA IP (using ab96507)

Lane 3 : Input (HeLa cell lysate)

Lane 4 : Supernatant IP (using non-Abcam antibody)

Lane 5 : Supernatant IP (using ab96507)

Western blot detection : mouse anti-Flotillin 2/ESA antibody + HRP donkey anti-mouse polyclonal secondary antibody



Anti-Flotillin 2/ESA antibody (ab96507) at 1/1000 dilution + HeLa
S3 whole cell lysate at 30 µg

Predicted band size: 47 kDa

10% SDS PAGE

Western blot - Anti-Flotillin 2/ESA antibody
(ab96507)

Please note: All products are "FOR RESEARCH USE ONLY. NOT FOR USE IN DIAGNOSTIC PROCEDURES"

Our Abpromise to you: Quality guaranteed and expert technical support

- Replacement or refund for products not performing as stated on the datasheet
- Valid for 12 months from date of delivery
- Response to your inquiry within 24 hours
- We provide support in Chinese, English, French, German, Japanese and Spanish
- Extensive multi-media technical resources to help you
- We investigate all quality concerns to ensure our products perform to the highest standards

If the product does not perform as described on this datasheet, we will offer a refund or replacement. For full details of the Abpromise, please visit <https://www.abcam.com/abpromise> or contact our technical team.

Terms and conditions

- Guarantee only valid for products bought direct from Abcam or one of our authorized distributors