

## Product datasheet

### Anti-Flt3 / CD135 antibody ab131545

[2 Images](#)

#### Overview

<b>Product name</b>	Anti-Flt3 / CD135 antibody
<b>Description</b>	Rabbit polyclonal to Flt3 / CD135
<b>Host species</b>	Rabbit
<b>Tested applications</b>	<b>Suitable for:</b> WB, ICC/IF
<b>Species reactivity</b>	<b>Reacts with:</b> Human
<b>Immunogen</b>	Synthetic peptide conjugated to KLH, corresponding to a region around amino acids 589-593 ( YFYVD ) of Human Flt3/ CD135 (NP_004110.2).

 [Run BLAST with](#)

 [Run BLAST with](#)

**Positive control** HeLa cells; 293 and MCF7 cell extracts.

**General notes**

The Life Science industry has been in the grips of a reproducibility crisis for a number of years. Abcam is leading the way in addressing this with our range of recombinant monoclonal antibodies and knockout edited cell lines for gold-standard validation. Please check that this product meets your needs before purchasing.

If you have any questions, special requirements or concerns, please send us an inquiry and/or contact our Support team ahead of purchase. Recommended alternatives for this product can be found below, along with publications, customer reviews and Q&As

#### Properties

<b>Form</b>	Liquid
<b>Storage instructions</b>	Shipped at 4°C. Store at -20°C. Stable for 12 months at -20°C.
<b>Storage buffer</b>	pH: 7.40 Preservative: 0.02% Sodium azide Constituents: 50% Glycerol (glycerin, glycerine), 0.88% Sodium chloride, 49% PBS
	PBS without Mg <sup>2+</sup> and Ca <sup>2+</sup>
<b>Purity</b>	Immunogen affinity purified
<b>Clonality</b>	Polyclonal
<b>Isotype</b>	IgG

## Applications

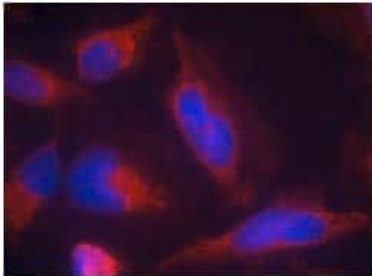
**The Abpromise guarantee** Our **Abpromise guarantee** covers the use of ab131545 in the following tested applications. The application notes include recommended starting dilutions; optimal dilutions/concentrations should be determined by the end user.

Application	Abreviews	Notes
WB		1/500 - 1/1000. Predicted molecular weight: 112 kDa.
ICC/IF		1/100 - 1/200.

## Target

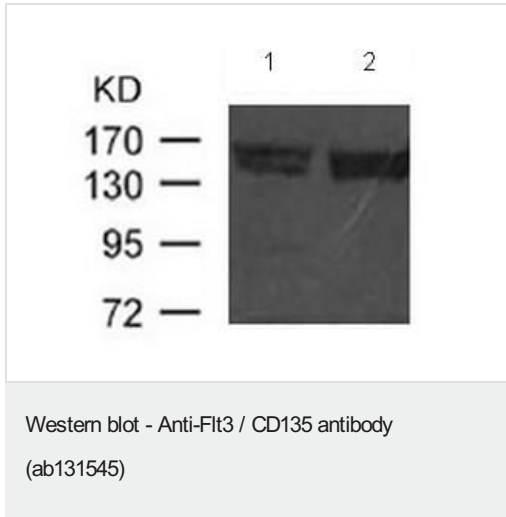
<b>Function</b>	Receptor for the FL cytokine. Has a tyrosine-protein kinase activity.
<b>Tissue specificity</b>	Bone marrow cells.
<b>Sequence similarities</b>	Belongs to the protein kinase superfamily. Tyr protein kinase family. CSF-1/PDGF receptor subfamily. Contains 1 Ig-like C2-type (immunoglobulin-like) domain. Contains 1 protein kinase domain.
<b>Cellular localization</b>	Membrane.

## Images



Immunofluorescent analysis of methanol-fixed HeLa cells labelling FITC / CD135 with ab131545 at 1/100 dilution.

Immunocytochemistry/ Immunofluorescence - Anti-FITC / CD135 antibody (ab131545)



**All lanes :** Anti-Flt3 / CD135 antibody (ab131545) at 1/500 dilution

**Lane 1 :** 293 cell extract

**Lane 2 :** MCF7 cell extract

**Predicted band size:** 112 kDa

**Please note:** All products are "FOR RESEARCH USE ONLY. NOT FOR USE IN DIAGNOSTIC PROCEDURES"

### Our Abpromise to you: Quality guaranteed and expert technical support

---

- Replacement or refund for products not performing as stated on the datasheet
- Valid for 12 months from date of delivery
- Response to your inquiry within 24 hours
- We provide support in Chinese, English, French, German, Japanese and Spanish
- Extensive multi-media technical resources to help you
- We investigate all quality concerns to ensure our products perform to the highest standards

If the product does not perform as described on this datasheet, we will offer a refund or replacement. For full details of the Abpromise, please visit <https://www.abcam.com/abpromise> or contact our technical team.

### Terms and conditions

---

- Guarantee only valid for products bought direct from Abcam or one of our authorized distributors