

Product datasheet

Anti-Flt3 / CD135 antibody [RM0021-12B6] αb73019

[2 References](#) [1 Image](#)

Overview

Product name	Anti-Flt3 / CD135 antibody [RM0021-12B6]
Description	Rat monoclonal [RM0021-12B6] to Flt3 / CD135
Host species	Rat
Tested applications	Suitable for: IHC-P
Species reactivity	Reacts with: Mouse
Immunogen	produced from a hybridoma (mouse myeloma) fused with spleen cells from a rat immunized with purified recombinant mouse Flt3/ CD135 extracellular domain.
General notes	<p>The Life Science industry has been in the grips of a reproducibility crisis for a number of years. Abcam is leading the way in addressing this with our range of recombinant monoclonal antibodies and knockout edited cell lines for gold-standard validation. Please check that this product meets your needs before purchasing.</p> <p>If you have any questions, special requirements or concerns, please send us an inquiry and/or contact our Support team ahead of purchase. Recommended alternatives for this product can be found below, along with publications, customer reviews and Q&As</p>

Properties

Form	Lyophilized:Reconstitute the antibody with 500 µl sterile PBS.
Storage instructions	Shipped at 4°C. Upon delivery aliquot and store at -20°C or -80°C. Avoid repeated freeze / thaw cycles.
Storage buffer	Constituent: PBS
Purity	Protein G purified
Purification notes	Purified from tissue culture supernatant. Filter sterilised.
Clonality	Monoclonal
Clone number	RM0021-12B6
Isotype	IgG2

Applications

The **Abpromise guarantee** Our **Abpromise guarantee** covers the use of ab73019 in the following tested applications.

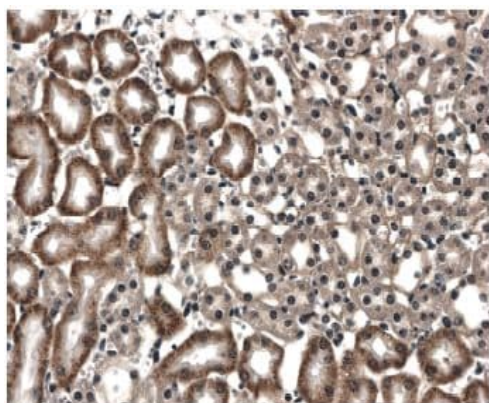
The application notes include recommended starting dilutions; optimal dilutions/concentrations should be determined by the end user.

Application	Abreviews	Notes
IHC-P		1/50 - 1/100.

Target

Function	Receptor for the FL cytokine. Has a tyrosine-protein kinase activity.
Tissue specificity	Bone marrow cells.
Sequence similarities	Belongs to the protein kinase superfamily. Tyr protein kinase family. CSF-1/PDGF receptor subfamily. Contains 1 Ig-like C2-type (immunoglobulin-like) domain. Contains 1 protein kinase domain.
Cellular localization	Membrane.

Images



ab73019 at 1/100 dilution, staining FIt3 / CD135 in LPS treated mouse tissue section by Immunohistochemistry (Formalin/PFA fixed paraffin-embedded sections).

Immunohistochemistry (Formalin/PFA-fixed paraffin-embedded sections) - Anti-FIt3 / CD135 antibody [RM0021-12B6] (ab73019)

Please note: All products are "FOR RESEARCH USE ONLY. NOT FOR USE IN DIAGNOSTIC PROCEDURES"

Our Abpromise to you: Quality guaranteed and expert technical support

- Replacement or refund for products not performing as stated on the datasheet
- Valid for 12 months from date of delivery
- Response to your inquiry within 24 hours
- We provide support in Chinese, English, French, German, Japanese and Spanish
- Extensive multi-media technical resources to help you
- We investigate all quality concerns to ensure our products perform to the highest standards

If the product does not perform as described on this datasheet, we will offer a refund or replacement. For full details of the Abpromise, please visit <https://www.abcam.com/abpromise> or contact our technical team.

Terms and conditions

- Guarantee only valid for products bought direct from Abcam or one of our authorized distributors