

Anti-FLVCR2 antibody ab234712

2 Images

Overview

Product name	Anti-FLVCR2 antibody
Description	Rabbit polyclonal to FLVCR2
Host species	Rabbit
Tested applications	Suitable for: WB, IHC-P
Species reactivity	Reacts with: Mouse, Human
Immunogen	Recombinant fragment corresponding to Human FLVCR2 aa 1-100. Database link: Q9UPI3
Positive control	WB: A549 whole cell lysate; mouse lung lysate. IHC-P: Human testis tissue.
General notes	<p>The Life Science industry has been in the grips of a reproducibility crisis for a number of years. Abcam is leading the way in addressing this with our range of recombinant monoclonal antibodies and knockout edited cell lines for gold-standard validation. Please check that this product meets your needs before purchasing.</p> <p>If you have any questions, special requirements or concerns, please send us an inquiry and/or contact our Support team ahead of purchase. Recommended alternatives for this product can be found below, along with publications, customer reviews and Q&As</p>

Properties

Form	Liquid
Storage instructions	Shipped at 4°C. Store at +4°C short term (1-2 weeks). Upon delivery aliquot. Store at -20°C long term. Avoid freeze / thaw cycle.
Storage buffer	pH: 7.30 Preservative: 0.02% Sodium azide Constituents: PBS, 50% Glycerol (glycerin, glycerine)
Purity	Immunogen affinity purified
Clonality	Polyclonal
Isotype	IgG

Applications

The Abpromise guarantee

Our **Abpromise guarantee** covers the use of ab234712 in the following tested applications.

The application notes include recommended starting dilutions; optimal dilutions/concentrations should be determined by the end user.

Application	Abreviews	Notes
WB		1/1000 - 1/5000. Detects a band of approximately 58 kDa (predicted molecular weight: 57 kDa).
IHC-P		1/20 - 1/200.

Target

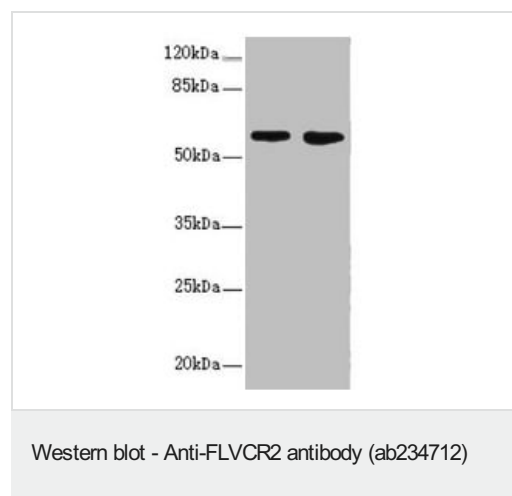
Relevance

This gene encodes a member of the major facilitator superfamily. The encoded transmembrane protein is a calcium transporter. Unlike the related protein feline leukemia virus subgroup C receptor 1, the protein encoded by this locus does not bind to feline leukemia virus subgroup C envelope protein. The encoded protein may play a role in development of brain vascular endothelial cells, as mutations at this locus have been associated with proliferative vasculopathy and hydranencephaly-hydrocephaly syndrome.

Cellular localization

Cell membrane; Multi-pass membrane protein.

Images



All lanes : Anti-FLVCR2 antibody (ab234712) at 1/1000 dilution

Lane 1 : A549 (human lung carcinoma cell line) whole cell lysate

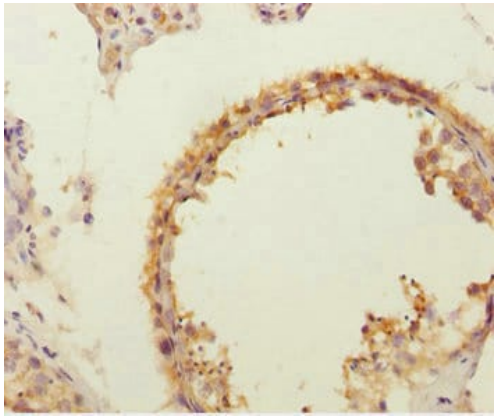
Lane 2 : Mouse lung lysate

Secondary

All lanes : Goat polyclonal to rabbit IgG at 1/10000 dilution

Predicted band size: 57 kDa

Observed band size: 58 kDa



Immunohistochemistry (Formalin/PFA-fixed paraffin-embedded sections) - Anti-FLVCR2 antibody (ab234712)

Paraffin-embedded human testis tissue stained for FLVCR2 using ab234712 at 1/100 dilution in immunohistochemical analysis.

Please note: All products are "FOR RESEARCH USE ONLY. NOT FOR USE IN DIAGNOSTIC PROCEDURES"

Our Abpromise to you: Quality guaranteed and expert technical support

- Replacement or refund for products not performing as stated on the datasheet
- Valid for 12 months from date of delivery
- Response to your inquiry within 24 hours
- We provide support in Chinese, English, French, German, Japanese and Spanish
- Extensive multi-media technical resources to help you
- We investigate all quality concerns to ensure our products perform to the highest standards

If the product does not perform as described on this datasheet, we will offer a refund or replacement. For full details of the Abpromise, please visit <https://www.abcam.com/abpromise> or contact our technical team.

Terms and conditions

- Guarantee only valid for products bought direct from Abcam or one of our authorized distributors