




## Product datasheet

### Anti-FOXC2 antibody ab5060

[27 References](#) [2 Images](#)

#### Overview

<b>Product name</b>	Anti-FOXC2 antibody
<b>Description</b>	Goat polyclonal to FOXC2
<b>Host species</b>	Goat
<b>Tested applications</b>	<b>Suitable for:</b> WB, ChIP <b>Unsuitable for:</b> IHC-Fr
<b>Species reactivity</b>	<b>Reacts with:</b> Mouse, Human, African green monkey <b>Predicted to work with:</b> Rat, Cow, Dog 
<b>Immunogen</b>	Synthetic peptide: RHAAPYSYDCTKY , corresponding to C terminal amino acids 489-501 of Human FOXC2.  <a href="#">Run BLAST with</a>  <a href="#">Run BLAST with</a>
<b>Positive control</b>	WB: HEK-293 nuclear lysate.
<b>General notes</b>	<p>The Life Science industry has been in the grips of a reproducibility crisis for a number of years. Abcam is leading the way in addressing this with our range of recombinant monoclonal antibodies and knockout edited cell lines for gold-standard validation. Please check that this product meets your needs before purchasing.</p> <p>If you have any questions, special requirements or concerns, please send us an inquiry and/or contact our Support team ahead of purchase. Recommended alternatives for this product can be found below, along with publications, customer reviews and Q&amp;As</p>

#### Properties

<b>Form</b>	Liquid
<b>Storage instructions</b>	Shipped at 4°C. Store at +4°C short term (1-2 weeks). Upon delivery aliquot. Store at -20°C or -80°C. Avoid freeze / thaw cycle.
<b>Storage buffer</b>	pH: 7.3 Preservative: 0.02% Sodium azide Constituents: Tris buffered saline, 0.5% BSA
<b>Purity</b>	Immunogen affinity purified
<b>Purification notes</b>	Purified from goat serum by ammonium sulphate precipitation followed by antigen affinity chromatography using the immunizing peptide.

<b>Clonality</b>	Polyclonal
<b>Isotype</b>	IgG

## Applications

**The Abpromise guarantee** Our **Abpromise guarantee** covers the use of ab5060 in the following tested applications.  
The application notes include recommended starting dilutions; optimal dilutions/concentrations should be determined by the end user.

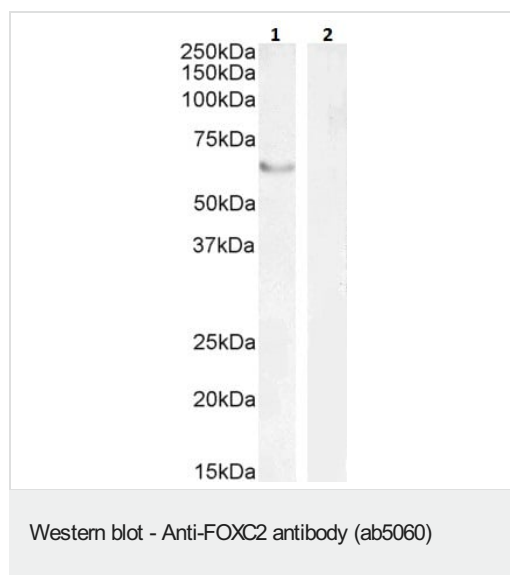
Application	Abreviews	Notes
<b>WB</b>		Use a concentration of 0.1 - 2 µg/ml. Detects a band of approximately 60-70 kDa (predicted molecular weight: 53 kDa). A 1 hour primary incubation is recommended for this product.
<b>ChIP</b>		Use at an assay dependent concentration. PubMed: 18579532

**Application notes** Is unsuitable for IHC-Fr.

## Target

<b>Function</b>	Transcriptional activator. Might be involved in the formation of special mesenchymal tissues.
<b>Involvement in disease</b>	<p>Defects in FOXC2 are the cause of lymphedema hereditary type 2 (LMPH2) [MIM:153200]; also known as Meige lymphedema. Hereditary lymphedema is a chronic disabling condition which results in swelling of the extremities due to altered lymphatic flow. Patients with lymphedema suffer from recurrent local infections, and physical impairment.</p> <p>Defects in FOXC2 are a cause of lymphedema-yellow nails (LYYN) [MIM:153300]. LYYN is characterized by yellow, dystrophic, thick and slowly growing nails, associated with lymphedema and respiratory involvement. Lymphedema occurs more often in the lower limbs. It can appear at birth or later in life. Onset generally follows the onset of ungual abnormalities.</p> <p>Defects in FOXC2 are a cause of lymphedema-distichiasis (LYD) [MIM:153400]. LYD is characterized by primary limb lymphedema usually starting at puberty (but in some cases later or at birth) and associated with distichiasis (double rows of eyelashes, with extra eyelashes growing from the Meibomian gland orifices).</p>
<b>Sequence similarities</b>	Contains 1 fork-head DNA-binding domain.
<b>Cellular localization</b>	Nucleus.

## Images



**Lane 1 :** Anti-FOXC2 antibody (ab5060) at 2 µg/ml

**Lane 2 :** Anti-FOXC2 antibody (ab5060) at 1 µg/ml

**Lane 1 :** nuclear HEK293 lysate in RIPA buffer

**Lane 2 :** human pancreas whole cell lysate (negative control) in RIPA buffer

Lysates/proteins at 35 µg per lane.

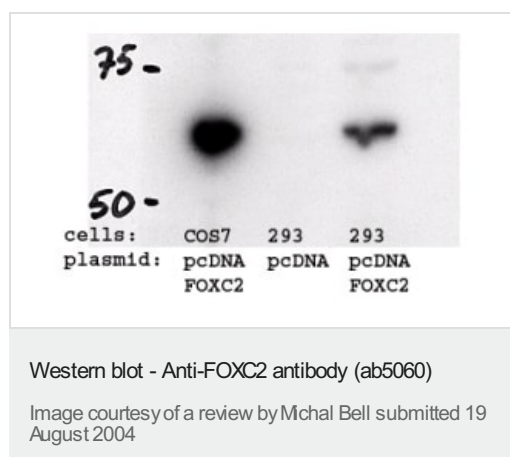
Developed using the ECL technique.

**Predicted band size:** 53 kDa

**Observed band size:** 60-70 kDa

Primary incubation: 1 hour at room temperature.

**Negative Control:** Human Pancreas lysate.



FoxC2 is highly expressed in COS7 and 293 cells transiently transfected with pcDNA-FOXC2. This figure shows a western blot incubated with the ab5060 antibody after running lysates from COS7 and 293 cells transiently expressing FoxC2 (lane 1 and 3 respectively). Lane 2 shows a negative control of 293 cells transfected with an empty vector.

**Please note:** All products are "FOR RESEARCH USE ONLY. NOT FOR USE IN DIAGNOSTIC PROCEDURES"

**Our Abpromise to you: Quality guaranteed and expert technical support**

- Replacement or refund for products not performing as stated on the datasheet

- Valid for 12 months from date of delivery
- Response to your inquiry within 24 hours
- We provide support in Chinese, English, French, German, Japanese and Spanish
- Extensive multi-media technical resources to help you
- We investigate all quality concerns to ensure our products perform to the highest standards

If the product does not perform as described on this datasheet, we will offer a refund or replacement. For full details of the Abpromise, please visit <https://www.abcam.com/abpromise> or contact our technical team.

#### **Terms and conditions**

---

- Guarantee only valid for products bought direct from Abcam or one of our authorized distributors