




## Product datasheet

# Anti-FOXG1 antibody ab3394

★☆☆☆☆ [1 Abreviews](#) [3 References](#) [3 Images](#)

### Overview

---

|                            |   |
|----------------------------|---|
| <b>Product name</b>        | Anti-FOXG1 antibody   |
| <b>Description</b>         | Goat polyclonal to FOXG1  |
| <b>Host species</b>        | Goat  |
| <b>Specificity</b>         | This antibody will recognise both human FOXG1A and FOXG1B, which are almost completely identical.   |
| <b>Tested applications</b> | <b>Suitable for:</b> Flow Cyt, WB   |
| <b>Species reactivity</b>  | <b>Reacts with:</b> Human<br><b>Predicted to work with:</b> Rat    |
| <b>Immunogen</b>           | Synthetic peptide corresponding to Human FOXG1 aa 457-469 (C terminal).<br>Sequence:<br>C-HQNQGSSSNPLIH<br><br>Database link: <a href="#">P55316</a><br>(Peptide available as <a href="#">ab22945</a> )<br><br> <a href="#">Run BLAST with</a>  <a href="#">Run BLAST with</a>  |
| <b>Positive control</b>    | WB: U251 cell lysate, Human cerebellum and cerebral cortex tissue lysates Flow Cyt: U251 cells  |
| <b>General notes</b>       | <p>The Life Science industry has been in the grips of a reproducibility crisis for a number of years. Abcam is leading the way in addressing this with our range of recombinant monoclonal antibodies and knockout edited cell lines for gold-standard validation. Please check that this product meets your needs before purchasing.</p> <p>If you have any questions, special requirements or concerns, please send us an inquiry and/or contact our Support team ahead of purchase. Recommended alternatives for this product can be found below, along with publications, customer reviews and Q&amp;As</p> |

### Properties

---

|                             |   |
|-----------------------------|---|
| <b>Form</b>                 | Liquid  |
| <b>Storage instructions</b> | Shipped at 4°C. Upon delivery aliquot and store at -20°C or -80°C. Avoid repeated freeze / thaw cycles. |
| <b>Storage buffer</b>       | pH: 7.30<br>Constituents: Tris buffered saline, 0.5% BSA  |

|                           |   |
|---------------------------|---|
| <b>Purity</b>             | Immunogen affinity purified   |
| <b>Purification notes</b> | Purified from goat serum by ammonium sulphate precipitation followed by antigen affinity chromatography using the immunizing peptide. |
| <b>Clonality</b>          | Polyclonal  |
| <b>Isotype</b>            | IgG   |

## Applications

**The Abpromise guarantee** Our **Abpromise guarantee** covers the use of ab3394 in the following tested applications.

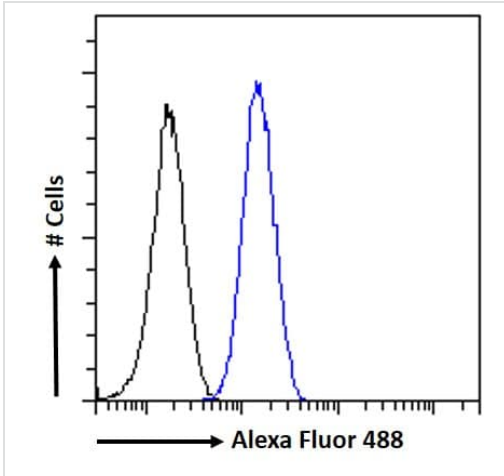
The application notes include recommended starting dilutions; optimal dilutions/concentrations should be determined by the end user.

| Application | Abreviews | Notes  |
|-------------|-----------|--|
| Flow Cyt    |           | Use a concentration of 10 µg/ml.   |
| WB          |           | Use a concentration of 0.3 - 1 µg/ml. Detects a band of approximately 48 kDa (predicted molecular weight: 54 kDa). A 1 hour primary incubation is recommended for this product. The additional unknown band at 70kDa was successfully blocked with the immunising peptide. |

## Target

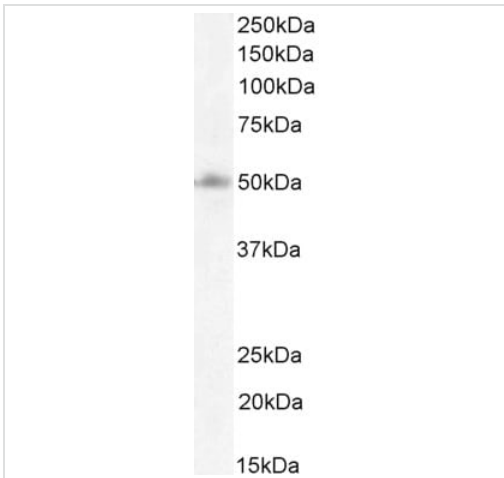
|                               |  |
|-------------------------------|--|
| <b>Function</b>               | Transcription repression factor which plays an important role in the establishment of the regional subdivision of the developing brain and in the development of the telencephalon.  |
| <b>Tissue specificity</b>     | Expression is restricted to the neurons of the developing telencephalon.   |
| <b>Involvement in disease</b> | Defects in FOXP1 are the cause of congenital variant of Rett syndrome (RTTCV) [MIM:613454]. RTTCV is a severe neurodevelopmental disorder with features of classic Rett syndrome but earlier onset in the first months of life. Clinical features include progressive microcephaly, hypotonia, irresponsiveness and irritability in the neonatal period, mental retardation, psychomotor regression and stereotypical movements. |
| <b>Sequence similarities</b>  | Contains 1 fork-head DNA-binding domain.   |
| <b>Cellular localization</b>  | Nucleus.   |

## Images



Flow Cytometry - Anti-FOXG1 antibody (ab3394)

Flow cytometric analysis of paraformaldehyde fixed U251 cells (blue line), permeabilized with 0.5% Triton. Primary incubation 1hr (10µg/mL) followed by Alexa Fluor 488 secondary antibody (1µg/mL). IgG control: Unimmunized goat IgG (black line) followed by Alexa Fluor 488 secondary antibody.

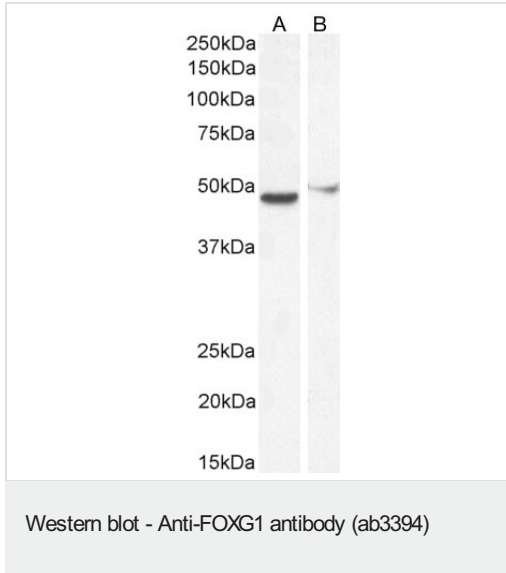


Western blot - Anti-FOXG1 antibody (ab3394)

Anti-FOXG1 antibody (ab3394) at 1 µg/ml + U251 cell lysate at 35 µg

**Predicted band size:** 54 kDa

Detected by chemiluminescence.



**All lanes :** Anti-FOXG1 antibody (ab3394) at 0.5 µg/ml

**Lane 1 :** Human Cerebellum tissue lysate

**Lane 2 :** Cerebral Cortex tissue lysate

Lysates/proteins at 35 µg per lane.

**Predicted band size:** 54 kDa

Detected by chemiluminescence.

**Please note:** All products are "FOR RESEARCH USE ONLY. NOT FOR USE IN DIAGNOSTIC PROCEDURES"

### Our Abpromise to you: Quality guaranteed and expert technical support

---

- Replacement or refund for products not performing as stated on the datasheet
- Valid for 12 months from date of delivery
- Response to your inquiry within 24 hours
- We provide support in Chinese, English, French, German, Japanese and Spanish
- Extensive multi-media technical resources to help you
- We investigate all quality concerns to ensure our products perform to the highest standards

If the product does not perform as described on this datasheet, we will offer a refund or replacement. For full details of the Abpromise, please visit <https://www.abcam.com/abpromise> or contact our technical team.

### Terms and conditions

---

- Guarantee only valid for products bought direct from Abcam or one of our authorized distributors