

Anti-FPRL1/RFP antibody ab63022

[6 References](#) [3 Images](#)

Overview

Product name	Anti-FPRL1/RFP antibody
Description	Rabbit polyclonal to FPRL1/RFP
Host species	Rabbit
Specificity	This antibody recognizes human FPRL-1.
Tested applications	Suitable for: WB, Flow Cyt, ICC/IF
Species reactivity	Reacts with: Human
Immunogen	Synthetic peptide corresponding to Human FPRL1/RFP conjugated to keyhole limpet haemocyanin.
Positive control	HL60 cells and extracts from HL60 cells
General notes	<p>The Life Science industry has been in the grips of a reproducibility crisis for a number of years. Abcam is leading the way in addressing this with our range of recombinant monoclonal antibodies and knockout edited cell lines for gold-standard validation. Please check that this product meets your needs before purchasing.</p> <p>If you have any questions, special requirements or concerns, please send us an inquiry and/or contact our Support team ahead of purchase. Recommended alternatives for this product can be found below, along with publications, customer reviews and Q&As</p>

Properties

Form	Liquid
Storage instructions	Shipped at 4°C. Upon delivery aliquot and store at -20°C. Avoid freeze / thaw cycles.
Purity	Protein G purified
Clonality	Polyclonal
Isotype	IgG

Applications

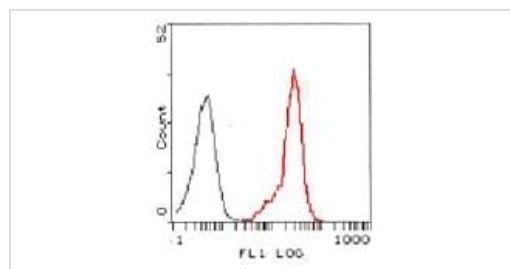
The Abpromise guarantee Our **Abpromise guarantee** covers the use of ab63022 in the following tested applications. The application notes include recommended starting dilutions; optimal dilutions/concentrations should be determined by the end user.

Application	Abreviews	Notes
WB		1/5000. Detects a band of approximately 38 kDa (predicted molecular weight: 39 kDa).
Flow Cyt		1/100. ab171870 - Rabbit polyclonal IgG, is suitable for use as an isotype control with this antibody.
ICC/IF		1/500.

Target

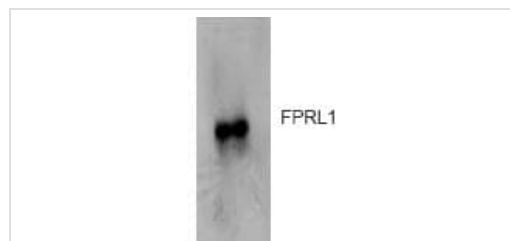
Function	Low affinity receptor for N-formyl-methionyl peptides, which are powerful neutrophils chemotactic factors. Binding of FMLP to the receptor causes activation of neutrophils. This response is mediated via a G-protein that activates a phosphatidylinositol-calcium second messenger system. The activation of LXA4R could result in an anti-inflammatory outcome counteracting the actions of proinflammatory signals such as LTB4 (leukotriene B4).
Tissue specificity	Expressed abundantly in the lung and neutrophils. Also found in the spleen and testis.
Sequence similarities	Belongs to the G-protein coupled receptor 1 family.
Cellular localization	Cell membrane.

Images



Flow Cytometry - Anti-FPRL1/RFP antibody (ab63022)

Flow cytometric analysis of HL60 cells using ab63022 at 1:100 (red) compared to a non-specific negative control antibody (black).

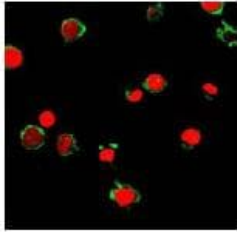


Western blot - Anti-FPRL1/RFP antibody (ab63022)

Anti-FPRL1/RFP antibody (ab63022) at 1/5000 dilution + Extracts from HL60 cells.

Predicted band size: 39 kDa

Observed band size: 38 kDa



Immunofluorescent analysis of HL60 cells using ab63022 (green) at 1:500. Nucleus have been labeled with PI (red).

Immunocytochemistry/ Immunofluorescence - Anti-FPRL1/RFP antibody (ab63022)

Please note: All products are "FOR RESEARCH USE ONLY. NOT FOR USE IN DIAGNOSTIC PROCEDURES"

Our Abpromise to you: Quality guaranteed and expert technical support

- Replacement or refund for products not performing as stated on the datasheet
- Valid for 12 months from date of delivery
- Response to your inquiry within 24 hours
- We provide support in Chinese, English, French, German, Japanese and Spanish
- Extensive multi-media technical resources to help you
- We investigate all quality concerns to ensure our products perform to the highest standards

If the product does not perform as described on this datasheet, we will offer a refund or replacement. For full details of the Abpromise, please visit <https://www.abcam.com/abpromise> or contact our technical team.

Terms and conditions

- Guarantee only valid for products bought direct from Abcam or one of our authorized distributors