

Product datasheet

Anti-FSH beta antibody [EPR24439-141] ab281562

Recombinant RabMAb

[1 References](#) [9 Images](#)

Overview

Product name	Anti-FSH beta antibody [EPR24439-141]
Description	Rabbit monoclonal [EPR24439-141] to FSH beta
Host species	Rabbit
Tested applications	Suitable for: IHC-P, IHC-Fr, WB Unsuitable for: ICC/IF or IP
Species reactivity	Reacts with: Mouse, Rat, Human
Immunogen	Recombinant fragment. This information is proprietary to Abcam and/or its suppliers.
Positive control	WB: Human pituitary, Mouse pituitary, Rat pituitary lysates. IHC-P: Human pituitary, Mouse pituitary, Rat pituitary tissues. IHC-Fr: Rat pituitary tissue.
General notes	<p>This product is a recombinant monoclonal antibody, which offers several advantages including:</p> <ul style="list-style-type: none"> - High batch-to-batch consistency and reproducibility - Improved sensitivity and specificity - Long-term security of supply - Animal-free production <p>For more information see here.</p> <p>Our RabMAb[®] technology is a patented hybridoma-based technology for making rabbit monoclonal antibodies. For details on our patents, please refer to RabMAb[®] patents.</p>

Properties

Form	Liquid
Storage instructions	Shipped at 4°C. Store at +4°C short term (1-2 weeks). Upon delivery aliquot. Store at -20°C long term. Avoid freeze / thaw cycle.
Storage buffer	Preservative: 0.01% Sodium azide Constituents: 59.94% PBS, 40% Glycerol (glycerin, glycerine), 0.05% BSA
Purity	Protein A purified
Clonality	Monoclonal
Clone number	EPR24439-141
Isotype	IgG

Applications

The Abpromise guarantee

Our **Abpromise guarantee** covers the use of ab281562 in the following tested applications.

The application notes include recommended starting dilutions; optimal dilutions/concentrations should be determined by the end user.

Application	Abreviews	Notes
IHC-P		1/2000. Perform heat mediated antigen retrieval with Tris/EDTA buffer pH 9.0 before commencing with IHC staining protocol.
IHC-Fr		1/100. Heat mediated antigen retrieval using sodium citrate buffer (10mM citrate pH 6.0 + 0.05% Tween-20).
WB		1/1000. Predicted molecular weight: 15 kDa.

Application notes

Is unsuitable for ICC/IF or IP.

Target

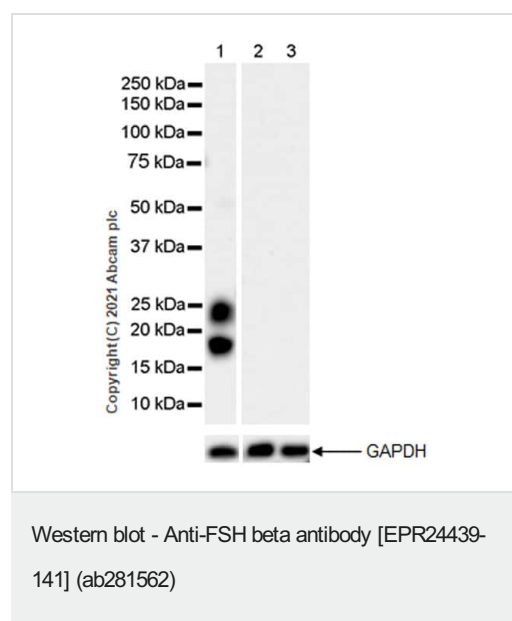
Relevance

Follicle stimulating hormone enables ovarian folliculogenesis to the antral follicle stage and is essential for Sertoli cell proliferation and maintenance of sperm quality in the testis. Members of the pituitary glycoprotein hormone family, of which FSH is one consist of a shared alpha chain and a beta chain encoded by a separate gene. The FSH beta gene encodes the beta subunit of follicle stimulating hormone.

Cellular localization

Secreted

Images



All lanes : Anti-FSH beta antibody [EPR24439-141] (ab281562) at 1/1000 dilution

Lane 1 : Human pituitary tissue lysate

Lane 2 : Human heart tissue lysate

Lane 3 : Human spleen tissue lysate

Lysates/proteins at 20 µg per lane.

Secondary

All lanes : VeriBlot for IP Detection Reagent (HRP) (**ab131366**) at 1/1000 dilution (VeriBlot for IP secondary antibody(HRP))

Predicted band size: 15 kDa

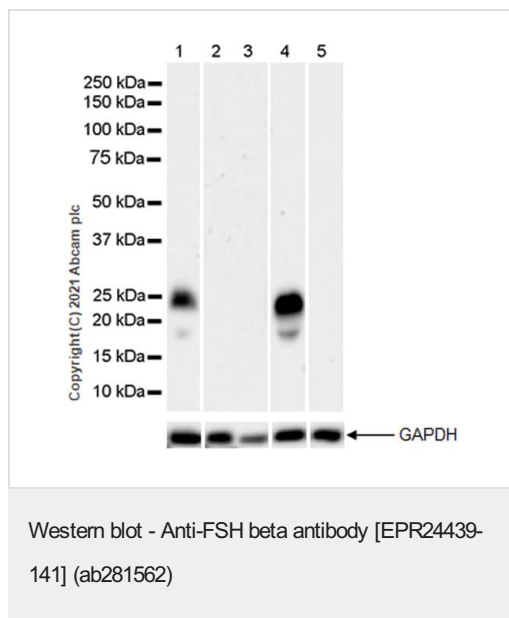
Observed band size: 23,19 kDa

Blocking and diluting buffer and concentration: 5% NFDM/TBST

The expression profile observed is consistent with what has been described in the literature (PMID: 29090093, 11502795).

Negative control: heart, spleen (PMID:29090093).

Exposure time: 81 seconds



All lanes : Anti-FSH beta antibody [EPR24439-141] (ab281562) at 1/1000 dilution

Lane 1 : Mouse pituitary tissue lysate

Lane 2 : Mouse heart tissue lysate

Lane 3 : Mouse spleen tissue lysate

Lane 4 : Rat pituitary tissue lysate

Lane 5 : Rat heart tissue lysate

Lysates/proteins at 20 µg per lane.

Secondary

All lanes : Goat Anti-Rabbit IgG H&L (HRP) ([ab97051](#)) at 1/50000 dilution (Goat Anti-Rabbit IgG, (H+L), Peroxidase conjugated)

Predicted band size: 15 kDa

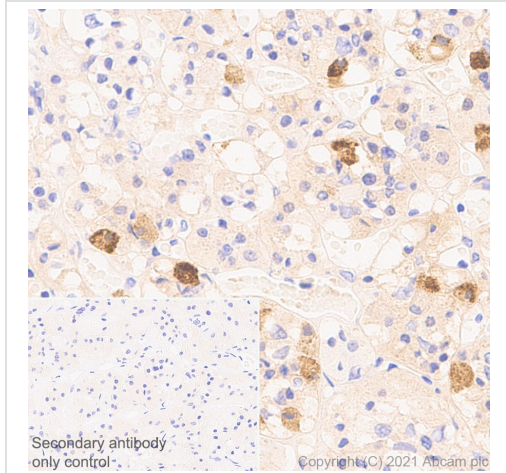
Observed band size: 23,19 kDa

Blocking and diluting buffer and concentration: 5% NFDM/TBST

The expression profile observed is consistent with what has been described in the literature (PMID: 29090093, 11502795).

Negative control: heart, spleen (PMID:29090093).

Exposure time: Lanes 1-3:3 minutes; Lanes 4-5:26 seconds.

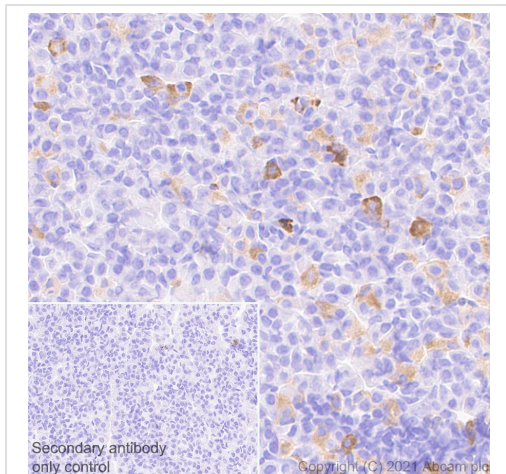


Immunohistochemistry (Formalin/PFA-fixed paraffin-embedded sections) - Anti-FSH beta antibody [EPR24439-141] (ab281562)

Immunohistochemical analysis of paraffin-embedded Human pituitary tissue labelling FSH beta with ab281562 at 1/2000 dilution (0.119 ug/ml) followed by a ready to use LeicaDS9800 (Bond™ Polymer Refine Detection). Positive staining on human pituitary (PMID: 8930609). The section was incubated with ab281562 for 30 mins at room temperature. The immunostaining was performed on a Leica Biosystems BOND® RX instrument. Counterstained with Hematoxylin.

Secondary antibody only control: Secondary antibody is a ready to use LeicaDS9800 (Bond™ Polymer Refine Detection).

Heat mediated antigen retrieval with Tris-EDTA buffer (pH 9.0, epitope retrieval solution2) for 20 mins.

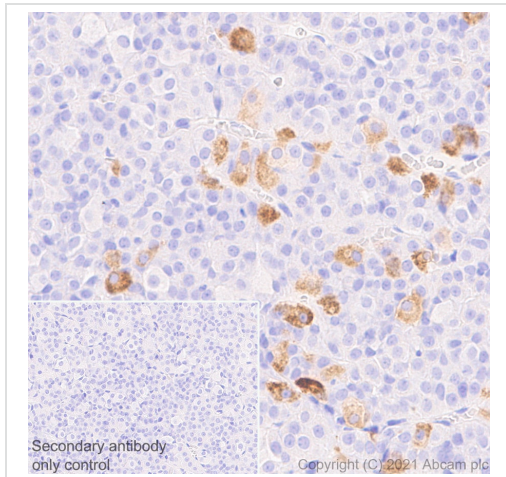


Immunohistochemistry (Formalin/PFA-fixed paraffin-embedded sections) - Anti-FSH beta antibody [EPR24439-141] (ab281562)

Immunohistochemical analysis of paraffin-embedded Mouse pituitary tissue labelling FSH beta with ab281562 at 1/4000 dilution (0.119 ug/ml) followed by a ready to use LeicaDS9800 (Bond™ Polymer Refine Detection). Positive staining on mouse pituitary. The section was incubated with ab281562 for 30 mins at room temperature. The immunostaining was performed on a Leica Biosystems BOND® RX instrument. Counterstained with Hematoxylin.

Secondary antibody only control: Secondary antibody is a ready to use LeicaDS9800 (Bond™ Polymer Refine Detection).

Heat mediated antigen retrieval with Tris-EDTA buffer (pH 9.0, epitope retrieval solution2) for 20 mins.

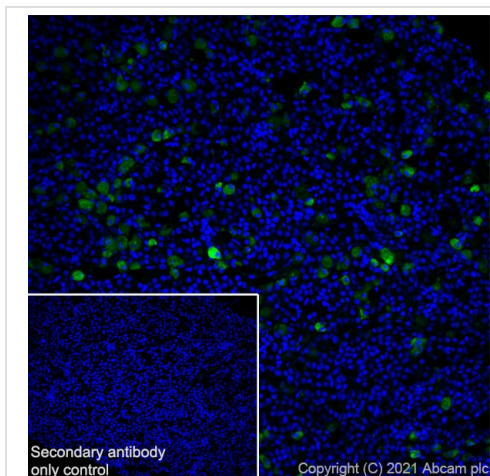


Immunohistochemistry (Formalin/PFA-fixed paraffin-embedded sections) - Anti-FSH beta antibody [EPR24439-141] (ab281562)

Immunohistochemical analysis of paraffin-embedded Rat pituitary tissue labelling FSH beta with ab281562 at 1/4000 dilution (0.119 ug/ml) followed by a ready to use LeicaDS9800 (Bond™ Polymer Refine Detection). Positive staining on rat pituitary. The section was incubated with ab281562 for 30 mins at room temperature. The immunostaining was performed on a Leica Biosystems BOND® RX instrument. Counterstained with Hematoxylin.

Secondary antibody only control: Secondary antibody is a ready to use LeicaDS9800 (Bond™ Polymer Refine Detection).

Heat mediated antigen retrieval with Tris-EDTA buffer (pH 9.0, epitope retrieval solution2) for 20 mins.

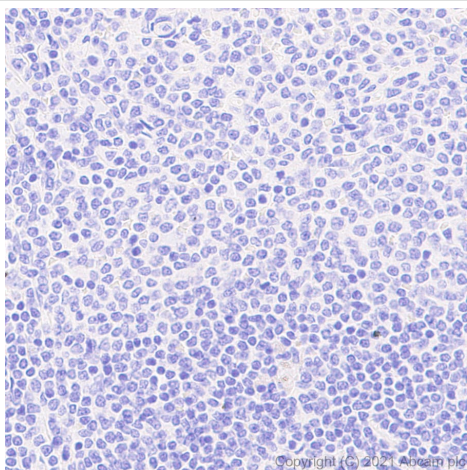


Immunohistochemistry (Frozen sections) - Anti-FSH beta antibody [EPR24439-141] (ab281562)

Immunohistochemical analysis of 4% PFA-fixed, 0.2% Triton X-100 permeabilized frozen Rat pituitary tissue labeling FSH beta with ab281562 at 1/100 dilution (4.75 ug/ml) followed by **ab150077** Goat Anti-Rabbit IgG H&L (Alexa Fluor® 488) at 1/1000 dilution (Green). Cytoplasmic staining on rat pituitary is observed. The nuclear counterstain was DAPI (Blue).

Secondary antibody control: Secondary antibody is **ab150077** Goat Anti-Rabbit IgG H&L (Alexa Fluor® 488) at 1/1000 dilution.

Heat mediated antigen retrieval using sodium citrate buffer (10mM citrate pH 6.0 + 0.05% Tween-20).

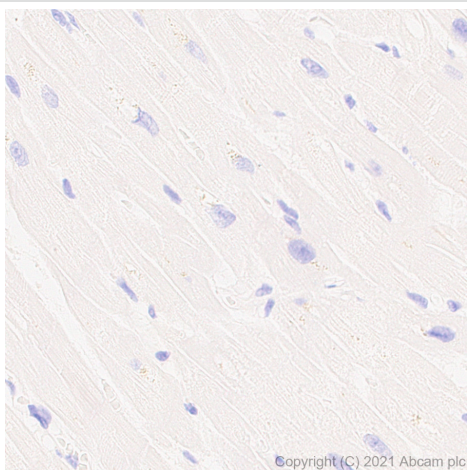


Immunohistochemistry (Formalin/PFA-fixed paraffin-embedded sections) - Anti-FSH beta antibody [EPR24439-141] (ab281562)

Immunohistochemical analysis of paraffin-embedded Human spleen tissue labelling FSH beta with ab281562 at 1/4000 dilution (0.119 ug/ml) followed by a ready to use LeicaDS9800 (Bond™ Polymer Refine Detection). **Negative control:** No staining on human spleen. The section was incubated with ab281562 for 30 mins at room temperature. The immunostaining was performed on a Leica Biosystems BOND® RX instrument. Counterstained with Hematoxylin.

Secondary antibody only control: Secondary antibody is a ready to use LeicaDS9800 (Bond™ Polymer Refine Detection).

Heat mediated antigen retrieval with Tris-EDTA buffer (pH 9.0, epitope retrieval solution2) for 20 mins.



Immunohistochemistry (Formalin/PFA-fixed paraffin-embedded sections) - Anti-FSH beta antibody [EPR24439-141] (ab281562)

Immunohistochemical analysis of paraffin-embedded Human cardiac muscle tissue labelling FSH beta with ab281562 at 1/4000 dilution (0.119 ug/ml) followed by a ready to use LeicaDS9800 (Bond™ Polymer Refine Detection). **Negative control:** No staining on human cardiac muscle. The section was incubated with ab281562 for 30 mins at room temperature. The immunostaining was performed on a Leica Biosystems BOND® RX instrument. Counterstained with Hematoxylin.

Secondary antibody only control: Secondary antibody is a ready to use LeicaDS9800 (Bond™ Polymer Refine Detection).

Heat mediated antigen retrieval with Tris-EDTA buffer (pH 9.0, epitope retrieval solution2) for 20 mins.

Why choose a recombinant antibody?



Research with confidence
Consistent and reproducible results



Long-term and scalable supply
Recombinant technology



Success from the first experiment
Confirmed specificity



Ethical standards compliant
Animal-free production

Anti-FSH beta antibody [EPR24439-141] (ab281562)

Please note: All products are "FOR RESEARCH USE ONLY. NOT FOR USE IN DIAGNOSTIC PROCEDURES"

Our Abpromise to you: Quality guaranteed and expert technical support

- Replacement or refund for products not performing as stated on the datasheet
- Valid for 12 months from date of delivery
- Response to your inquiry within 24 hours
- We provide support in Chinese, English, French, German, Japanese and Spanish
- Extensive multi-media technical resources to help you
- We investigate all quality concerns to ensure our products perform to the highest standards

If the product does not perform as described on this datasheet, we will offer a refund or replacement. For full details of the Abpromise, please visit <https://www.abcam.com/abpromise> or contact our technical team.

Terms and conditions

- Guarantee only valid for products bought direct from Abcam or one of our authorized distributors