

## Product datasheet

### Anti-FXR1 antibody ab245624

3 Images

#### Overview

<b>Product name</b>	Anti-FXR1 antibody
<b>Description</b>	Rabbit polyclonal to FXR1
<b>Host species</b>	Rabbit
<b>Tested applications</b>	<b>Suitable for:</b> IP, WB
<b>Species reactivity</b>	<b>Reacts with:</b> Mouse, Human
<b>Immunogen</b>	Synthetic peptide within Human FXR1 aa 571-621. The exact sequence is proprietary. NP_005078.2 Database link: <a href="#">P51114</a>
<b>Positive control</b>	WB: HEK-293T, HeLa, 3T3 and Jurkat whole cell lysate. IP: HEK-293T whole cell lysate.
<b>General notes</b>	<p>The Life Science industry has been in the grips of a reproducibility crisis for a number of years. Abcam is leading the way in addressing this with our range of recombinant monoclonal antibodies and knockout edited cell lines for gold-standard validation. Please check that this product meets your needs before purchasing.</p> <p>If you have any questions, special requirements or concerns, please send us an inquiry and/or contact our Support team ahead of purchase. Recommended alternatives for this product can be found below, along with publications, customer reviews and Q&amp;As</p>

#### Properties

<b>Form</b>	Liquid
<b>Storage instructions</b>	Shipped at 4°C. Store at +4°C short term (1-2 weeks). Upon delivery aliquot. Store at -20°C long term. Avoid freeze / thaw cycle.
<b>Storage buffer</b>	<p>pH: 7</p> <p>Preservative: 0.09% Sodium azide</p> <p>Constituent: Tris citrate/phosphate</p>
<b>Purity</b>	pH 7 to 8 Immunogen affinity purified
<b>Purification notes</b>	ab245624 was affinity purified using an epitope specific to FXR1 immobilized on solid support.
<b>Clonality</b>	Polyclonal
<b>Isotype</b>	IgG

## Applications

### The Abpromise guarantee

Our **Abpromise guarantee** covers the use of ab245624 in the following tested applications.

The application notes include recommended starting dilutions; optimal dilutions/concentrations should be determined by the end user.

Application	Abreviews	Notes
IP		Use at 2-10 µg/mg of lysate.
WB		1/2000 - 1/10000. Predicted molecular weight: 70 kDa.

## Target

### Function

RNA-binding protein required for embryonic and postnatal development of muscle tissue. May regulate intracellular transport and local translation of certain mRNAs.

### Tissue specificity

Expressed in all tissues examined including heart, brain, kidney and testis.

### Sequence similarities

Belongs to the FMR1 family.

Contains 2 KH domains.

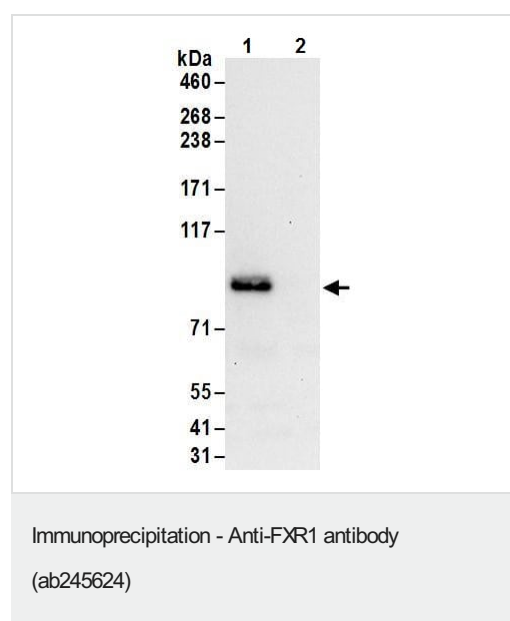
### Post-translational modifications

Arg-445 is dimethylated, probably to asymmetric dimethylarginine.

### Cellular localization

Cytoplasm.

## Images

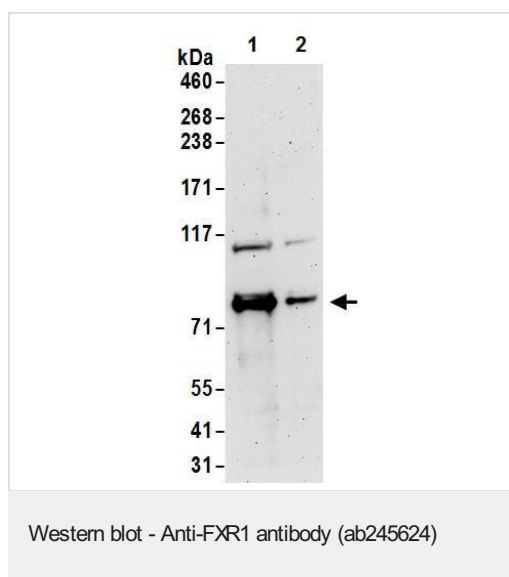


FXR1 was immunoprecipitated from HEK-293T (human epithelial cell line from embryonic kidney transformed with large T antigen) whole cell lysate (1 mg for IP, 20% of IP loaded) using ab245624 at 6 µg/reaction. Western blot was performed on the immunoprecipitate using ab245624 at 1 µg/ml.

**Lane 1:** ab245624 IP in HEK-293T whole cell lysate.

**Lane 2:** Control IgG in HEK-293T whole cell lysate.

Detection: Chemiluminescence with an exposure time of 10 seconds.



**All lanes :** Anti-FXR1 antibody (ab245624) at 0.4 µg/ml

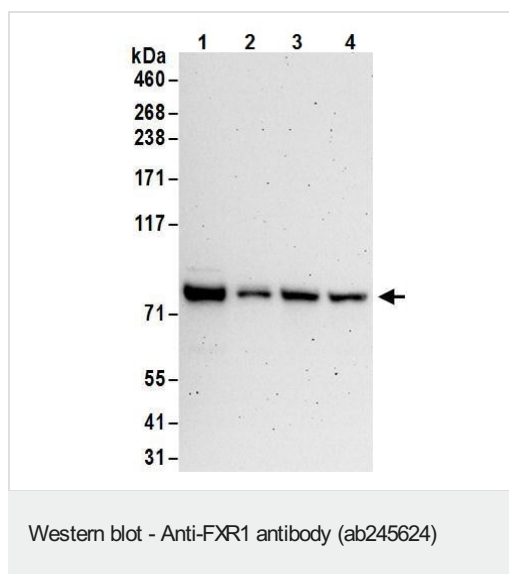
**Lane 1 :** NIH/3T3 (mouse embryo fibroblast cell line) whole cell lysate at 50 µg

**Lane 2 :** NIH/3T3 (mouse embryo fibroblast cell line) whole cell lysate at 15 µg

Developed using the ECL technique.

**Predicted band size:** 70 kDa

**Exposure time:** 3 minutes



**All lanes :** Anti-FXR1 antibody (ab245624) at 0.1 µg/ml

**Lane 1 :** HEK-293T (human epithelial cell line from embryonic kidney transformed with large T antigen) whole cell lysate at 50 µg

**Lane 2 :** HEK-293T (human epithelial cell line from embryonic kidney transformed with large T antigen) whole cell lysate at 15 µg

**Lane 3 :** HeLa (human epithelial cell line from cervix adenocarcinoma) whole cell lysate at 50 µg

**Lane 4 :** Jurkat (human T cell leukemia cell line from peripheral blood) whole cell lysate at 50 µg

Developed using the ECL technique.

**Predicted band size:** 70 kDa

**Exposure time:** 3 minutes

**Please note:** All products are "FOR RESEARCH USE ONLY. NOT FOR USE IN DIAGNOSTIC PROCEDURES"

### Our Abpromise to you: Quality guaranteed and expert technical support

- Replacement or refund for products not performing as stated on the datasheet
- Valid for 12 months from date of delivery
- Response to your inquiry within 24 hours

- We provide support in Chinese, English, French, German, Japanese and Spanish
- Extensive multi-media technical resources to help you
- We investigate all quality concerns to ensure our products perform to the highest standards

If the product does not perform as described on this datasheet, we will offer a refund or replacement. For full details of the Abpromise, please visit <https://www.abcam.com/abpromise> or contact our technical team.

#### **Terms and conditions**

---

- Guarantee only valid for products bought direct from Abcam or one of our authorized distributors