


Product datasheet

Anti-FXYD1/PLM antibody ab76597

★★★★☆ [5 Abreviews](#) [11 References](#) [1 Image](#)

Overview

Product name	Anti-FXYD1/PLM antibody
Description	Rabbit polyclonal to FXYD1/PLM
Host species	Rabbit
Tested applications	Suitable for: WB
Species reactivity	Reacts with: Human Predicted to work with: Mouse, Rat, Cow, Dog, Macaque monkey 
Immunogen	Synthetic peptide corresponding to Human FXYD1/PLM aa 50 to the C-terminus (C terminal) conjugated to keyhole limpet haemocyanin. (Peptide available as ab88161)
General notes	<p>The Life Science industry has been in the grips of a reproducibility crisis for a number of years. Abcam is leading the way in addressing this with our range of recombinant monoclonal antibodies and knockout edited cell lines for gold-standard validation. Please check that this product meets your needs before purchasing.</p> <p>If you have any questions, special requirements or concerns, please send us an inquiry and/or contact our Support team ahead of purchase. Recommended alternatives for this product can be found below, along with publications, customer reviews and Q&As</p>

Properties

Form	Liquid
Storage instructions	Shipped at 4°C. Store at +4°C short term (1-2 weeks). Upon delivery aliquot. Store at -20°C or -80°C. Avoid freeze / thaw cycle.
Storage buffer	pH: 7.40 Preservative: 0.02% Sodium azide Constituent: PBS Batches of this product that have a concentration < 1mg/ml may have BSA added as a stabilising agent. If you would like information about the formulation of a specific lot, please contact our scientific support team who will be happy to help.
Purity	Immunogen affinity purified
Clonality	Polyclonal

Isotype

IgG

Applications

The Abpromise guarantee

Our **Abpromise guarantee** covers the use of ab76597 in the following tested applications.

The application notes include recommended starting dilutions; optimal dilutions/concentrations should be determined by the end user.

Application	Abreviews	Notes
WB	★★★★☆ (4)	Use a concentration of 1 µg/ml. Detects a band of approximately 10 kDa (predicted molecular weight: 10 kDa).

Target

Function

May have a functional role in muscle contraction. Induces a hyperpolarization-activated chloride current when exogenously expressed.

Tissue specificity

Highest expression in skeletal muscle and heart. Moderate levels in brain, placenta, lung, liver, pancreas, uterus, bladder, prostate, small intestine and colon with mucosal lining. Very low levels in kidney, colon and small intestine without mucosa, prostate without endothelial lining, spleen, and testis.

Sequence similarities

Belongs to the FXYP family.

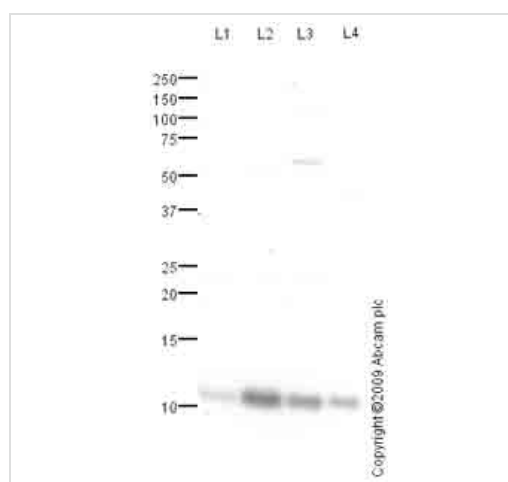
Post-translational modifications

Major plasma membrane substrate for cAMP-dependent protein kinase (PK-A) and protein kinase C (PK-C) in several different tissues (By similarity). Phosphorylated in response to insulin and adrenergic stimulation. May be phosphorylated by DMPK. Palmitoylation increases half-life and stability, it is enhanced upon phosphorylation at Ser-88 by PKA.

Cellular localization

Membrane.

Images



Western blot - Anti-FXYD1/PLM antibody (ab76597)

All lanes : Anti-FXYD1/PLM antibody (ab76597) at 1 µg/ml

Lane 1 : Human brain tissue lysate - total protein (**ab29466**)

Lane 2 : Human brain normal tissue lysate - membrane extract (**ab29456**)

Lane 3 : Human heart tissue lysate - total protein (**ab29431**)

Lane 4 : Human skeletal muscle tissue lysate - total protein (**ab29330**)

Lysates/proteins at 10 µg per lane.

Secondary

All lanes : Goat polyclonal to Rabbit IgG - H&L - Pre-Adsorbed (HRP) at 1/3000 dilution

Developed using the ECL technique.

Performed under reducing conditions.

Predicted band size: 10 kDa

Observed band size: 10 kDa

Exposure time: 5 minutes

Please note: All products are "FOR RESEARCH USE ONLY. NOT FOR USE IN DIAGNOSTIC PROCEDURES"

Our Abpromise to you: Quality guaranteed and expert technical support

- Replacement or refund for products not performing as stated on the datasheet
- Valid for 12 months from date of delivery
- Response to your inquiry within 24 hours

- We provide support in Chinese, English, French, German, Japanese and Spanish
- Extensive multi-media technical resources to help you
- We investigate all quality concerns to ensure our products perform to the highest standards

If the product does not perform as described on this datasheet, we will offer a refund or replacement. For full details of the Abpromise, please visit <https://www.abcam.com/abpromise> or contact our technical team.

Terms and conditions

- Guarantee only valid for products bought direct from Abcam or one of our authorized distributors