


Product datasheet

Anti-FYCO1 antibody ab224818

2 Images

Overview

Product name	Anti-FYCO1 antibody
Description	Rabbit polyclonal to FYCO1
Host species	Rabbit
Tested applications	Suitable for: WB, IP
Species reactivity	Reacts with: Human Predicted to work with: Horse, Dog, Chimpanzee, Orangutan 
Immunogen	Synthetic peptide within Human FYCO1 aa 325-375. The exact sequence is proprietary. (NP_078789.2). Database link: Q9BQS8
Positive control	WB: HeLa and HEK-293T whole cell lysates. IP: HeLa whole cell lysate.
General notes	<p>The Life Science industry has been in the grips of a reproducibility crisis for a number of years. Abcam is leading the way in addressing this with our range of recombinant monoclonal antibodies and knockout edited cell lines for gold-standard validation. Please check that this product meets your needs before purchasing.</p> <p>If you have any questions, special requirements or concerns, please send us an inquiry and/or contact our Support team ahead of purchase. Recommended alternatives for this product can be found below, along with publications, customer reviews and Q&As</p>

Properties

Form	Liquid
Storage instructions	Shipped at 4°C. Store at +4°C short term (1-2 weeks). Upon delivery aliquot. Store at -20°C long term. Avoid freeze / thaw cycle.
Storage buffer	pH: 6.8 Preservative: 0.09% Sodium azide Constituents: 0.1% BSA, Tris buffered saline
Purity	Immunogen affinity purified
Purification notes	ab224818 was affinity purified using an epitope specific to FYCO1 immobilized on solid support.
Clonality	Polyclonal
Isotype	IgG

Applications

The Abpromise guarantee

Our **Abpromise guarantee** covers the use of ab224818 in the following tested applications.

The application notes include recommended starting dilutions; optimal dilutions/concentrations should be determined by the end user.

Application	Abreviews	Notes
WB		1/2000 - 1/10000. Predicted molecular weight: 167 kDa.
IP		Use at 5-15 µg/mg of lysate.

Target

Tissue specificity

Expressed in heart and skeletal muscle.

Sequence similarities

Contains 1 FYVE-type zinc finger.

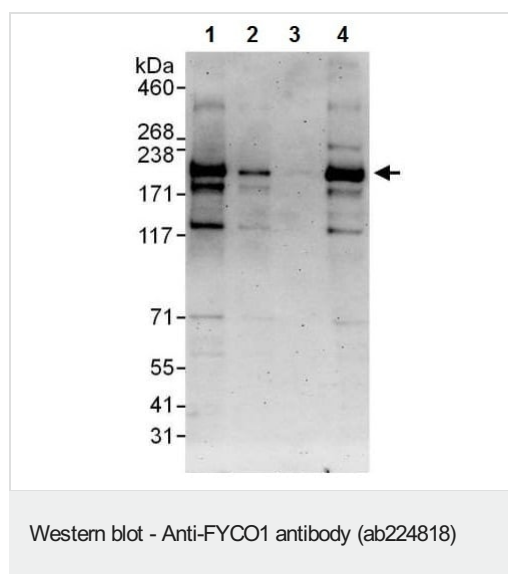
Contains 1 GOLD domain.

Contains 1 RUN domain.

Post-translational modifications

Phosphorylated upon DNA damage, probably by ATM or ATR.

Images



All lanes : Anti-FYCO1 antibody (ab224818) at 0.04 µg/ml

Lane 1 : HeLa (human epithelial cell line from cervix adenocarcinoma) whole cell lysate at 50 µg

Lane 2 : HeLa (human epithelial cell line from cervix adenocarcinoma) whole cell lysate at 15 µg

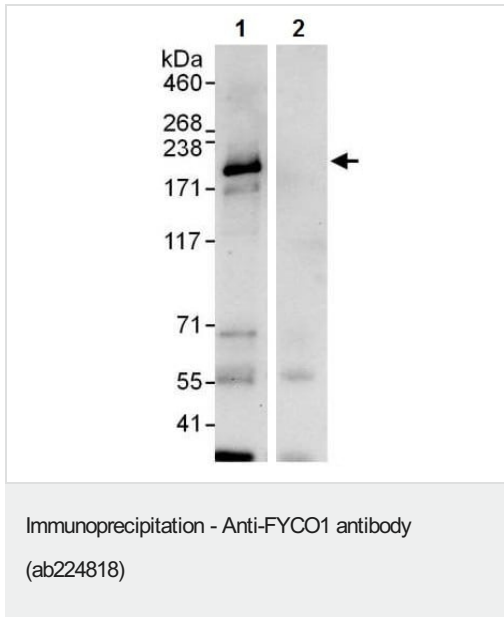
Lane 3 : HeLa (human epithelial cell line from cervix adenocarcinoma) whole cell lysate at 5 µg

Lane 4 : HEK-293T (human epithelial cell line from embryonic kidney transformed with large T antigen) whole cell lysate at 50 µg

Developed using the ECL technique.

Predicted band size: 167 kDa

Exposure time: 3 minutes



FYCO1 was immunoprecipitated from HeLa (human epithelial cell line from cervix adenocarcinoma) whole cell lysate (1 mg for IP, 20% of IP loaded) with ab224818 at 10 µg/mg lysate. Western blot was performed from the immunoprecipitate using ab224818 at 0.4 µg/ml.

Lane 1: ab224818 IP in HeLa whole cell lysate.

Lane 2: Control IgG IP in HeLa whole cell lysate.

Detection: Chemiluminescence with exposure time of 30 seconds.

Please note: All products are "FOR RESEARCH USE ONLY. NOT FOR USE IN DIAGNOSTIC PROCEDURES"

Our Abpromise to you: Quality guaranteed and expert technical support

- Replacement or refund for products not performing as stated on the datasheet
- Valid for 12 months from date of delivery
- Response to your inquiry within 24 hours
- We provide support in Chinese, English, French, German, Japanese and Spanish
- Extensive multi-media technical resources to help you
- We investigate all quality concerns to ensure our products perform to the highest standards

If the product does not perform as described on this datasheet, we will offer a refund or replacement. For full details of the Abpromise, please visit <https://www.abcam.com/abpromise> or contact our technical team.

Terms and conditions

- Guarantee only valid for products bought direct from Abcam or one of our authorized distributors