


Anti-FYTTD1 antibody ab125082

★★★★★ [1 Abreviews](#) [2 Images](#)

Overview

Product name	Anti-FYTTD1 antibody
Description	Rabbit polyclonal to FYTTD1
Host species	Rabbit
Tested applications	Suitable for: WB, IP
Species reactivity	Reacts with: Mouse, Human Predicted to work with: Rat, Horse, Chimpanzee, Rhesus monkey, Gorilla, Orangutan, Bat, Elephant 
Immunogen	Synthetic peptide, corresponding to a region within amino acids 1-50 of Human FYTTD1 (NP_115664.2).
Positive control	293T, Jurkat, HeLa and NIH3T3 whole cell lysates.
General notes	<p>The Life Science industry has been in the grips of a reproducibility crisis for a number of years. Abcam is leading the way in addressing this with our range of recombinant monoclonal antibodies and knockout edited cell lines for gold-standard validation. Please check that this product meets your needs before purchasing.</p> <p>If you have any questions, special requirements or concerns, please send us an inquiry and/or contact our Support team ahead of purchase. Recommended alternatives for this product can be found below, along with publications, customer reviews and Q&As</p>

Properties

Form	Liquid
Storage instructions	Shipped at 4°C. Upon delivery aliquot and store at -20°C. Avoid freeze / thaw cycles.
Storage buffer	<p>pH: 7</p> <p>Preservative: 0.09% Sodium azide</p> <p>Constituent: 99% Tris citrate/phosphate</p> <p>pH 7 to 8</p>
Purity	Immunogen affinity purified
Purification notes	ab125082 is affinity purified using an epitope specific to FYTTD1 immobilized on solid support.
Clonality	Polyclonal

Isotype

IgG

Applications

The Abpromise guarantee

Our **Abpromise guarantee** covers the use of ab125082 in the following tested applications.

The application notes include recommended starting dilutions; optimal dilutions/concentrations should be determined by the end user.

Application	Abreviews	Notes
WB	★★★★★ (1)	1/1000 - 1/5000. Predicted molecular weight: 36 kDa.
IP		Use at 2-10 µg/mg of lysate.

Target

Function

Required for mRNA export from the nucleus to the cytoplasm. Acts as an adapter that uses the DDX39B/UAP56-NFX1 pathway to ensure efficient mRNA export and delivering to the nuclear pore. Associates with spliced and unspliced mRNAs simultaneously with THOC4.

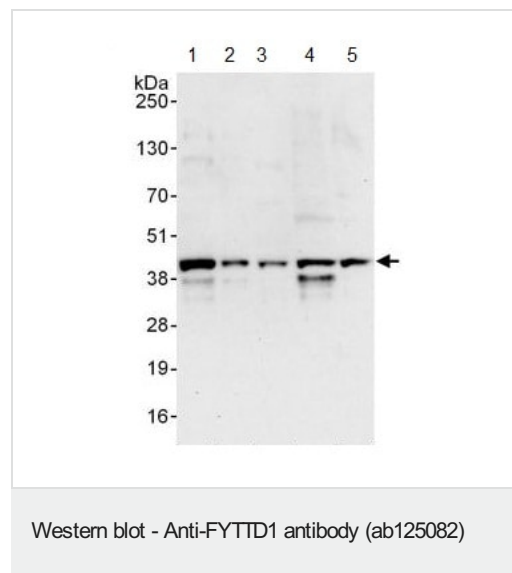
Sequence similarities

Belongs to the UIF family.

Cellular localization

Nucleus > nucleoplasm. Nucleus speckle.

Images



All lanes : Anti-FYTTD1 antibody (ab125082) at 0.4 µg/ml

Lane 1 : 293T whole cell lysate at 50 µg

Lane 2 : 293T whole cell lysate at 15 µg

Lane 3 : Jurkat whole cell lysate at 50 µg

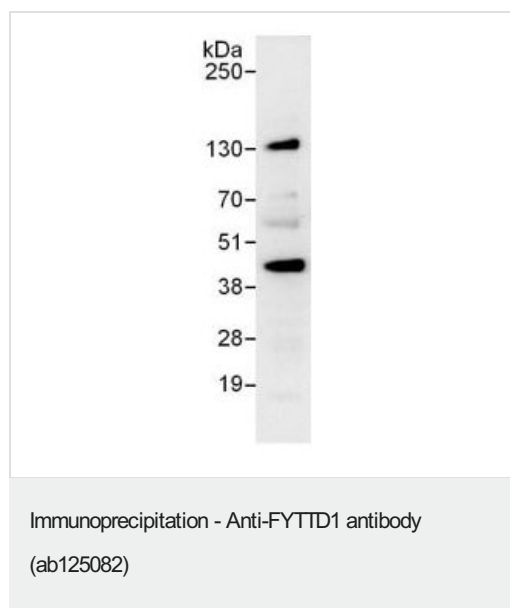
Lane 4 : HeLa cell lysate at 50 µg

Lane 5 : NIH3T3 whole cell lysate at 50 µg

Developed using the ECL technique.

Predicted band size: 36 kDa

Exposure time: 30 seconds



Detection of FYTDD1 by Western Blot of Immunoprecipitate.
ab125082 at 1 µg/ml staining FYTDD1 in 293T whole cell lysate
immunoprecipitated using ab125082 at 6 µg/mg lysate (1 mg/IP;
20% of IP loaded/lane).
Detection: Chemiluminescence with exposure time of 30 seconds.

Please note: All products are "FOR RESEARCH USE ONLY. NOT FOR USE IN DIAGNOSTIC PROCEDURES"

Our Abpromise to you: Quality guaranteed and expert technical support

- Replacement or refund for products not performing as stated on the datasheet
- Valid for 12 months from date of delivery
- Response to your inquiry within 24 hours
- We provide support in Chinese, English, French, German, Japanese and Spanish
- Extensive multi-media technical resources to help you
- We investigate all quality concerns to ensure our products perform to the highest standards

If the product does not perform as described on this datasheet, we will offer a refund or replacement. For full details of the Abpromise, please visit <https://www.abcam.com/abpromise> or contact our technical team.

Terms and conditions

- Guarantee only valid for products bought direct from Abcam or one of our authorized distributors