


Product datasheet

Anti-GABA A Receptor alpha 2/GABRA2 antibody ab72445

★★★★☆ [1 Abreviews](#) [18 References](#) [1 Image](#)

Overview

Product name	Anti-GABA A Receptor alpha 2/GABRA2 antibody
Description	Rabbit polyclonal to GABA A Receptor alpha 2/GABRA2
Host species	Rabbit
Specificity	ab72445 is specific for GABA A Receptor alpha 2/GABRA2
Tested applications	Suitable for: WB
Species reactivity	Reacts with: Mouse Predicted to work with: Cow, Dog, Human, Non human primates, Zebrafish 
Immunogen	Fusion protein. This information is proprietary to Abcam and/or its suppliers.
Positive control	rat brain lysates
General notes	<p>The Life Science industry has been in the grips of a reproducibility crisis for a number of years. Abcam is leading the way in addressing this with our range of recombinant monoclonal antibodies and knockout edited cell lines for gold-standard validation. Please check that this product meets your needs before purchasing.</p> <p>If you have any questions, special requirements or concerns, please send us an inquiry and/or contact our Support team ahead of purchase. Recommended alternatives for this product can be found below, along with publications, customer reviews and Q&As</p>

Properties

Form	Liquid
Storage instructions	Shipped at 4°C. Upon delivery aliquot and store at -20°C. Avoid freeze / thaw cycles.
Storage buffer	pH: 7.50 Constituents: 0.01% BSA, 50% Glycerol, 0.87% Sodium chloride, 0.238% HEPES
Purity	Immunogen affinity purified
Clonality	Polyclonal
Isotype	IgG

Applications

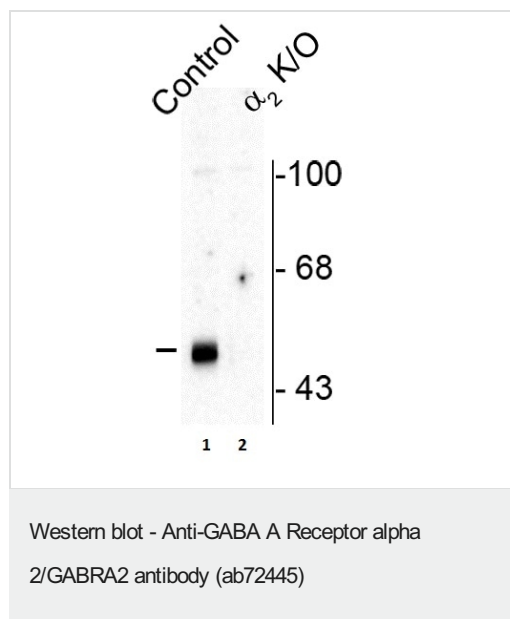
The Abpromise guarantee Our **Abpromise guarantee** covers the use of ab72445 in the following tested applications. The application notes include recommended starting dilutions; optimal dilutions/concentrations should be determined by the end user.

Application	Abreviews	Notes
WB		1/1000. Detects a band of approximately 51 kDa (predicted molecular weight: 51 kDa).

Target

Function	GABA, the major inhibitory neurotransmitter in the vertebrate brain, mediates neuronal inhibition by binding to the GABA/benzodiazepine receptor and opening an integral chloride channel.
Sequence similarities	Belongs to the ligand-gated ion channel (TC 1.A.9) family. Gamma-aminobutyric acid receptor (TC 1.A.9.5) subfamily. GABRA2 sub-subfamily.
Cellular localization	Cell junction > synapse > postsynaptic cell membrane. Cell membrane.

Images



All lanes : Anti-GABA A Receptor alpha 2/GABRA2 antibody (ab72445) at 1/1000 dilution

Lane 1 : Wild type Mouse brain lysates

Lane 2 : GABA A Receptor alpha 2/GABRA2 knockout mouse brain lysate

Predicted band size: 51 kDa

Observed band size: 51 kDa

Please note: All products are "FOR RESEARCH USE ONLY. NOT FOR USE IN DIAGNOSTIC PROCEDURES"

Our Abpromise to you: Quality guaranteed and expert technical support

- Replacement or refund for products not performing as stated on the datasheet
- Valid for 12 months from date of delivery
- Response to your inquiry within 24 hours
- We provide support in Chinese, English, French, German, Japanese and Spanish
- Extensive multi-media technical resources to help you

- We investigate all quality concerns to ensure our products perform to the highest standards

If the product does not perform as described on this datasheet, we will offer a refund or replacement. For full details of the Abpromise, please visit <https://www.abcam.com/abpromise> or contact our technical team.

Terms and conditions

- Guarantee only valid for products bought direct from Abcam or one of our authorized distributors