

Product datasheet

Anti-GABA A Receptor beta 2/GABRB2 + GABA A Receptor gamma 2/GABRG2 + GABA A Receptor alpha 1 antibody [1F4] ab281915

Recombinant

[1 References](#) [1 Image](#)

Overview

Product name	Anti-GABA A Receptor beta 2/GABRB2 + GABA A Receptor gamma 2/GABRG2 + GABA A Receptor alpha 1 antibody [1F4]
Description	Rabbit monoclonal [1F4] to GABA A Receptor beta 2/GABRB2 + GABA A Receptor gamma 2/GABRG2 + GABA A Receptor alpha 1
Host species	Rabbit
Tested applications	Suitable for: ICC
Species reactivity	Reacts with: Human
Immunogen	Full length protein. Raised against alpha1 beta2 gamma2 GABA-A receptor.
Positive control	ICC: U251 cells.
General notes	<p>ab281915 is the rabbit chimera vesion of ab281914.</p> <p>This chimeric rabbit antibody was made using the variable domain sequences of the original Mouse IgG2b format, for improved compatibility with existing reagents, assays and techniques.</p> <p>This product is a recombinant monoclonal antibody, which offers several advantages including:</p> <ul style="list-style-type: none">- High batch-to-batch consistency and reproducibility- Improved sensitivity and specificity- Long-term security of supply- Animal-free production <p>For more information see here.</p>

Properties

Form	Liquid
Storage instructions	Shipped at 4°C. Store at +4°C short term (1-2 weeks). Upon delivery aliquot. Store at -20°C. Avoid freeze / thaw cycle.
Storage buffer	Preservative: 0.02% Proclin 300 Constituent: 99% PBS
Purity	Protein A purified

Clonality	Monoclonal
Clone number	1F4
Isotype	IgG
Light chain type	kappa

Applications

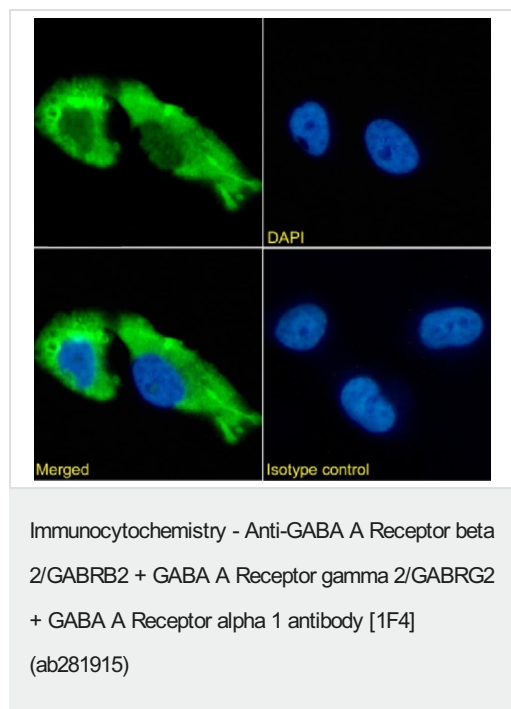
The Abpromise guarantee Our **Abpromise guarantee** covers the use of ab281915 in the following tested applications. The application notes include recommended starting dilutions; optimal dilutions/concentrations should be determined by the end user.

Application	Abreviews	Notes
ICC		Use a concentration of 10 µg/ml.

Target

Cellular localization GABA A Receptor beta 2/GABRB2: Cell junction > synapse > postsynaptic cell membrane. Cell membrane. GABA A Receptor gamma 2/GABRG2: Cell junction > synapse > postsynaptic cell membrane. Cell membrane. GABA A Receptor alpha 1: Cell junction > synapse > postsynaptic cell membrane. Cell membrane.

Images



U251 cells stained for GABA A Receptor gamma 2/GABRG2 + GABA A Receptor alpha 1 + GABA Receptor Beta 2 (green) using ab281915 at 10 µg/ml for 1 hour, followed by Alexa Fluor® 488 secondary antibody at 2 µg/ml in ICC. The nuclear stain is DAPI (blue). Panels show from left-right, top-bottom ab281915, DAPI, merged channels and an isotype control. The isotype control was an unknown specificity antibody followed by staining with Alexa Fluor® 488 secondary antibody.

Please note: All products are "FOR RESEARCH USE ONLY. NOT FOR USE IN DIAGNOSTIC PROCEDURES"

Our Abpromise to you: Quality guaranteed and expert technical support

- Replacement or refund for products not performing as stated on the datasheet
- Valid for 12 months from date of delivery
- Response to your inquiry within 24 hours

- We provide support in Chinese, English, French, German, Japanese and Spanish
- Extensive multi-media technical resources to help you
- We investigate all quality concerns to ensure our products perform to the highest standards

If the product does not perform as described on this datasheet, we will offer a refund or replacement. For full details of the Abpromise, please visit <https://www.abcam.com/abpromise> or contact our technical team.

Terms and conditions

- Guarantee only valid for products bought direct from Abcam or one of our authorized distributors