




## Product datasheet

# Anti-GABA Transporter 2 antibody ab229815

[1 References](#) [4 Images](#)

### Overview

<b>Product name</b>	Anti-GABA Transporter 2 antibody
<b>Description</b>	Rabbit polyclonal to GABA Transporter 2
<b>Host species</b>	Rabbit
<b>Tested applications</b>	<b>Suitable for:</b> WB, ICC/IF, IHC-P
<b>Species reactivity</b>	<b>Reacts with:</b> Mouse, Human <b>Predicted to work with:</b> Cynomolgus monkey 
<b>Immunogen</b>	Recombinant fragment corresponding to Human GABA Transporter 2 aa 1-100. Database link: <a href="#">Q9NSD5</a> <div>  <a href="#">Run BLAST with</a>  <a href="#">Run BLAST with</a> </div>
<b>Positive control</b>	WB: Mouse heart, brain and kidney lysates. IHC-P: Human testis and kidney tissues. ICC/IF: A549 cells.
<b>General notes</b>	<p>The Life Science industry has been in the grips of a reproducibility crisis for a number of years. Abcam is leading the way in addressing this with our range of recombinant monoclonal antibodies and knockout edited cell lines for gold-standard validation. Please check that this product meets your needs before purchasing.</p> <p>If you have any questions, special requirements or concerns, please send us an inquiry and/or contact our Support team ahead of purchase. Recommended alternatives for this product can be found below, along with publications, customer reviews and Q&amp;As</p>

### Properties

<b>Form</b>	Liquid
<b>Storage instructions</b>	Shipped at 4°C. Store at +4°C short term (1-2 weeks). Upon delivery aliquot. Store at -20°C long term. Avoid freeze / thaw cycle.
<b>Storage buffer</b>	pH: 7.40 Preservative: 0.03% Proclin 300 Constituents: PBS, 50% Glycerol (glycerin, glycerine)
<b>Purity</b>	Protein G purified
<b>Purification notes</b>	Purity >95%.
<b>Clonality</b>	Polyclonal

Isotype

IgG

## Applications

### The Abpromise guarantee

Our **Abpromise guarantee** covers the use of ab229815 in the following tested applications.

The application notes include recommended starting dilutions; optimal dilutions/concentrations should be determined by the end user.

Application	Abreviews	Notes
WB		1/500 - 1/5000. Detects a band of approximately 69 kDa (predicted molecular weight: 68 kDa).
ICC/IF		1/50 - 1/200.
IHC-P		1/20 - 1/200.

## Target

### Function

Sodium-dependent GABA and taurine transporter. In presynaptic terminals, regulates GABA signaling termination through GABA uptake. May also be involved in beta-alanine transport.

### Tissue specificity

Expressed in brain, kidney, lung, liver and testis.

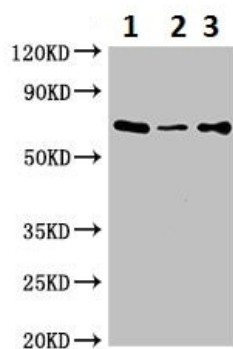
### Sequence similarities

Belongs to the sodium:neurotransmitter symporter (SNF) (TC 2.A.22) family. SLC6A13 subfamily.

### Cellular localization

Cell membrane.

## Images



Western blot - Anti-GABA Transporter 2 antibody (ab229815)

**All lanes** : Anti-GABA Transporter 2 antibody (ab229815) at 1/500 dilution

**Lane 1** : Mouse heart lysate

**Lane 2** : Mouse brain lysate

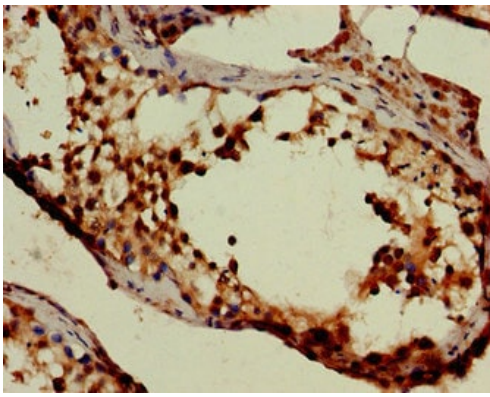
**Lane 3** : Mouse kidney lysate

### Secondary

**All lanes** : Goat anti-rabbit IgG at 1/50000 dilution

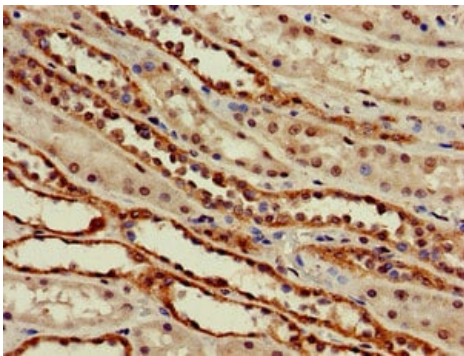
**Predicted band size:** 68 kDa

**Observed band size:** 69 kDa



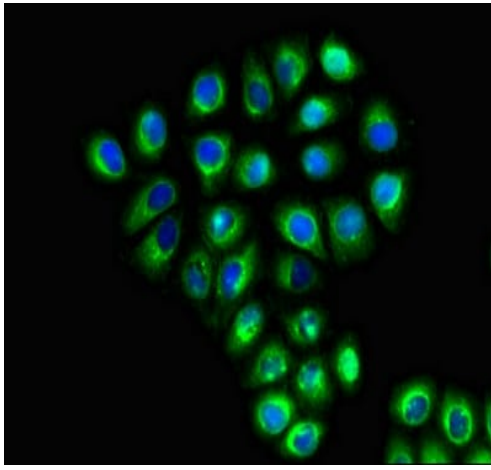
Paraffin-embedded human testis tissue stained for GABA Transporter 2 using ab229815 at 1/100 dilution in immunohistochemical analysis.

Immunohistochemistry (Formalin/PFA-fixed paraffin-embedded sections) - Anti-GABA Transporter 2 antibody (ab229815)



Paraffin-embedded human kidney tissue stained for GABA Transporter 2 using ab229815 at 1/100 dilution in immunohistochemical analysis.

Immunohistochemistry (Formalin/PFA-fixed paraffin-embedded sections) - Anti-GABA Transporter 2 antibody (ab229815)



Immunocytochemistry/ Immunofluorescence - Anti-GABA Transporter 2 antibody (ab229815)

A549 (human lung carcinoma cell line) cells stained for GABA Transporter 2 (green) using ab229815 at 1/100 dilution in ICC/IF, followed by Alexa Fluor 488<sup>®</sup> conjugated Goat Anti-Rabbit IgG (H+L).

**Please note:** All products are "FOR RESEARCH USE ONLY. NOT FOR USE IN DIAGNOSTIC PROCEDURES"

#### Our Abpromise to you: Quality guaranteed and expert technical support

---

- Replacement or refund for products not performing as stated on the datasheet
- Valid for 12 months from date of delivery
- Response to your inquiry within 24 hours
- We provide support in Chinese, English, French, German, Japanese and Spanish
- Extensive multi-media technical resources to help you
- We investigate all quality concerns to ensure our products perform to the highest standards

If the product does not perform as described on this datasheet, we will offer a refund or replacement. For full details of the Abpromise, please visit <https://www.abcam.com/abpromise> or contact our technical team.

#### Terms and conditions

---

- Guarantee only valid for products bought direct from Abcam or one of our authorized distributors