


## Product datasheet

# Anti-GABRR2 antibody ab153961

2 Images

### Overview

---

<b>Product name</b>	Anti-GABRR2 antibody
<b>Description</b>	Rabbit polyclonal to GABRR2
<b>Host species</b>	Rabbit
<b>Tested applications</b>	<b>Suitable for:</b> WB
<b>Species reactivity</b>	<b>Reacts with:</b> Mouse, Human <b>Predicted to work with:</b> Rat, Cow 
<b>Immunogen</b>	Recombinant fragment, corresponding to a region within amino acids 21-294 of Human GABRR2 (Uniprot ID P28476).
<b>Positive control</b>	SK-N-SH and Neuro2A whole cell lysate.
<b>General notes</b>	<p>The Life Science industry has been in the grips of a reproducibility crisis for a number of years. Abcam is leading the way in addressing this with our range of recombinant monoclonal antibodies and knockout edited cell lines for gold-standard validation. Please check that this product meets your needs before purchasing.</p> <p>If you have any questions, special requirements or concerns, please send us an inquiry and/or contact our Support team ahead of purchase. Recommended alternatives for this product can be found below, along with publications, customer reviews and Q&amp;As</p>

### Properties

---

<b>Form</b>	Liquid
<b>Storage instructions</b>	Shipped at 4°C. Upon delivery aliquot. Store at -20°C or -80°C. Avoid freeze / thaw cycle.
<b>Storage buffer</b>	pH: 7.00 Preservative: 0.01% Thimerosal (merthiolate) Constituents: 78.99% PBS, 1% BSA, 20% Glycerol (glycerin, glycerine)
<b>Purity</b>	Immunogen affinity purified
<b>Clonality</b>	Polyclonal
<b>Isotype</b>	IgG

### Applications

---

## The Abpromise guarantee

Our **Abpromise guarantee** covers the use of ab153961 in the following tested applications.

The application notes include recommended starting dilutions; optimal dilutions/concentrations should be determined by the end user.

Application	Abreviews	Notes
WB		1/500 - 1/3000. Predicted molecular weight: 57 kDa.

## Target

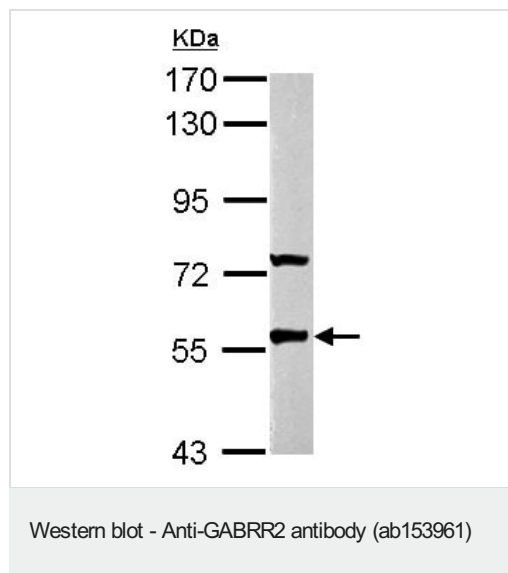
### Relevance

GABA is the major inhibitory neurotransmitter in the vertebrate brain and mediates neuronal inhibition by binding to the gaba/benzodiazepine receptors and opening an integral chloride channel. GABRR2 is a member of the rho subunit family of GABA receptors and could play a role in retinal neurotransmission.

### Cellular localization

Cell junction > synapse > postsynaptic cell membrane; Multi-pass membrane protein. Cell membrane; Multi-pass membrane protein.

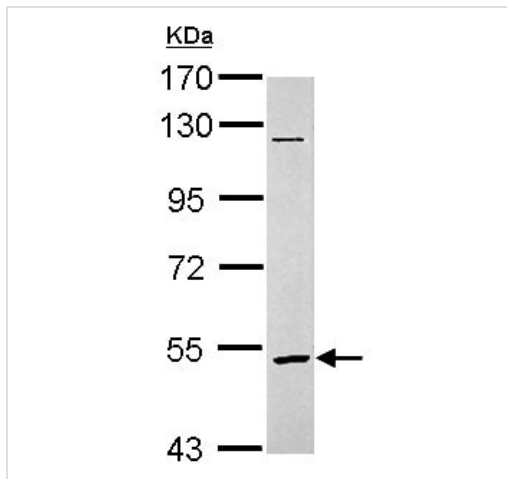
## Images



Anti-GABRR2 antibody (ab153961) at 1/1000 dilution + Neuro2A whole cell lysate at 30  $\mu$ g

**Predicted band size:** 57 kDa

7.5% SDS PAGE



Western blot - Anti-GABRR2 antibody (ab153961)

Anti-GABRR2 antibody (ab153961) at 1/3000 dilution + SK-N-SH whole cell lysate at 30  $\mu$ g

**Predicted band size:** 57 kDa

7.5% SDS PAGE

**Please note:** All products are "FOR RESEARCH USE ONLY. NOT FOR USE IN DIAGNOSTIC PROCEDURES"

### Our Abpromise to you: Quality guaranteed and expert technical support

---

- Replacement or refund for products not performing as stated on the datasheet
- Valid for 12 months from date of delivery
- Response to your inquiry within 24 hours
- We provide support in Chinese, English, French, German, Japanese and Spanish
- Extensive multi-media technical resources to help you
- We investigate all quality concerns to ensure our products perform to the highest standards

If the product does not perform as described on this datasheet, we will offer a refund or replacement. For full details of the Abpromise, please visit <https://www.abcam.com/abpromise> or contact our technical team.

### Terms and conditions

---

- Guarantee only valid for products bought direct from Abcam or one of our authorized distributors