



Product datasheet

Anti-Galactosidase alpha antibody ab230924

3 Images

Overview

Product name	Anti-Galactosidase alpha antibody
Description	Rabbit polyclonal to Galactosidase alpha
Host species	Rabbit
Tested applications	Suitable for: WB, IHC-P, ICC/IF
Species reactivity	Reacts with: Human
Immunogen	Recombinant fragment corresponding to Human Galactosidase alpha aa 150 to the C-terminus. (NP_000160.1). Database link: P06280
	<div>  Run BLAST with </div> <div>  Run BLAST with </div>
Positive control	WB: SW620, BT-474 and HeLa cell extracts. IHC-P: Human adrenal tissue. ICC/IF: HeLa cells.
General notes	<p>The Life Science industry has been in the grips of a reproducibility crisis for a number of years. Abcam is leading the way in addressing this with our range of recombinant monoclonal antibodies and knockout edited cell lines for gold-standard validation. Please check that this product meets your needs before purchasing.</p> <p>If you have any questions, special requirements or concerns, please send us an inquiry and/or contact our Support team ahead of purchase. Recommended alternatives for this product can be found below, along with publications, customer reviews and Q&As</p>

Properties

Form	Liquid
Storage instructions	Shipped at 4°C. Store at +4°C short term (1-2 weeks). Upon delivery aliquot. Store at -20°C long term. Avoid freeze / thaw cycle.
Storage buffer	pH: 7.30 Preservative: 0.02% Sodium azide Constituents: PBS, 50% Glycerol (glycerin, glycerine)
Purity	Affinity purified
Clonality	Polyclonal
Isotype	IgG

Applications

The Abpromise guarantee

Our **Abpromise guarantee** covers the use of ab230924 in the following tested applications.

The application notes include recommended starting dilutions; optimal dilutions/concentrations should be determined by the end user.

Application	Abreviews	Notes
WB		1/500 - 1/2000. Predicted molecular weight: 49 kDa.
IHC-P		1/100 - 1/200. Perform heat mediated antigen retrieval before commencing with IHC staining protocol.
ICC/IF		1/50 - 1/100.

Target

Involvement in disease

Defects in GLA are the cause of Fabry disease (FD) [MIM:301500]. FD is a rare X-linked sphingolipidosis disease where glycolipid accumulates in many tissues. The disease consists of an inborn error of glycosphingolipid catabolism. FD patients show systemic accumulation of globotriaosylceramide (Gb3) and related glycosphingolipids in the plasma and cellular lysosomes throughout the body. Clinical recognition in males results from characteristic skin lesions (angiokeratomas) over the lower trunk. Patients may show ocular deposits, febrile episodes, and burning pain in the extremities. Death results from renal failure, cardiac or cerebral complications of hypertension or other vascular disease. Heterozygous females may exhibit the disorder in an attenuated form, they are more likely to show corneal opacities.

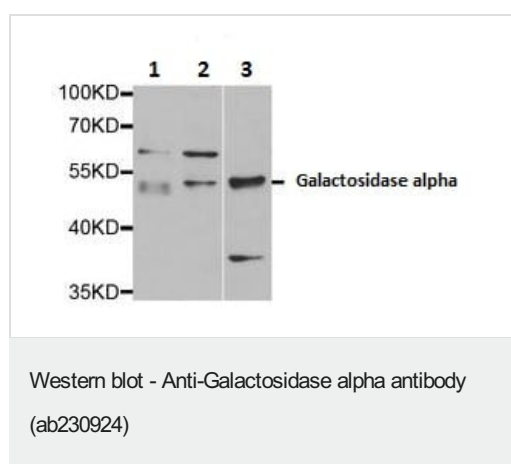
Sequence similarities

Belongs to the glycosyl hydrolase 27 family.

Cellular localization

Lysosome.

Images



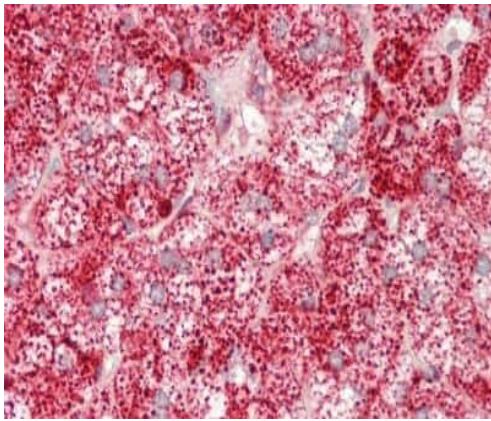
All lanes : Anti-Galactosidase alpha antibody (ab230924) at 1/500 dilution

Lane 1 : SW620 cell extract

Lane 2 : BT-474 (human ductal breast epithelial tumor cell line) cell extract

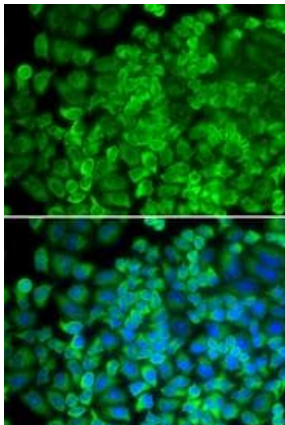
Lane 3 : HeLa (human epithelial cell line from cervix adenocarcinoma) cell extract

Predicted band size: 49 kDa



Immunohistochemistry (Formalin/PFA-fixed paraffin-embedded sections) - Anti-Galactosidase alpha antibody (ab230924)

Formalin-fixed, paraffin-embedded human adrenal tissue stained for Galactosidase alpha with ab230924 at 1/100 dilution in immunohistochemical analysis.



Immunocytochemistry/ Immunofluorescence - Anti-Galactosidase alpha antibody (ab230924)

HeLa (human epithelial cell line from cervix adenocarcinoma) cells stained for Galactosidase alpha (green) using ab230924 at 1/50 dilution in ICC/IF.

The nuclear counter stain is DAPI (blue).

Please note: All products are "FOR RESEARCH USE ONLY. NOT FOR USE IN DIAGNOSTIC PROCEDURES"

Our Abpromise to you: Quality guaranteed and expert technical support

- Replacement or refund for products not performing as stated on the datasheet
- Valid for 12 months from date of delivery
- Response to your inquiry within 24 hours
- We provide support in Chinese, English, French, German, Japanese and Spanish
- Extensive multi-media technical resources to help you
- We investigate all quality concerns to ensure our products perform to the highest standards

If the product does not perform as described on this datasheet, we will offer a refund or replacement. For full details of the Abpromise, please visit <https://www.abcam.com/abpromise> or contact our technical team.

Terms and conditions

- Guarantee only valid for products bought direct from Abcam or one of our authorized distributors