

## Product datasheet

# Anti-Galactoside 2-alpha-L-fucosyltransferase 1 antibody ab198712

★★★★★ [2 Abreviews](#) [2 References](#) [3 Images](#)

### Overview

<b>Product name</b>	Anti-Galactoside 2-alpha-L-fucosyltransferase 1 antibody
<b>Description</b>	Rabbit polyclonal to Galactoside 2-alpha-L-fucosyltransferase 1
<b>Host species</b>	Rabbit
<b>Specificity</b>	May cross react with FUT2.
<b>Tested applications</b>	<b>Suitable for:</b> IHC-P, WB
<b>Species reactivity</b>	<b>Reacts with:</b> Human
<b>Immunogen</b>	Synthetic peptide corresponding to Human Galactoside 2-alpha-L-fucosyltransferase 1 (internal sequence). Database link: <a href="#">P19526</a>
<b>Positive control</b>	WB: Human cerebella and cerebrum tissue and Raji cell lysates; IHC: Human esophagus and cervical cancer tissue.
<b>General notes</b>	<p>The protein encoded by this gene is a Golgi stack membrane protein that is involved in the creation of a precursor of the H antigen, which is required for the final step in the soluble A and B antigen synthesis pathway. This gene is one of two encoding the galactoside 2-L-fucosyltransferase enzyme. Mutations in this gene are a cause of the H-Bombay blood group.</p> <p>The Life Science industry has been in the grips of a reproducibility crisis for a number of years. Abcam is leading the way in addressing this with our range of recombinant monoclonal antibodies and knockout edited cell lines for gold-standard validation. Please check that this product meets your needs before purchasing.</p> <p>If you have any questions, special requirements or concerns, please send us an inquiry and/or contact our Support team ahead of purchase. Recommended alternatives for this product can be found below, along with publications, customer reviews and Q&amp;As</p>

### Properties

<b>Form</b>	Liquid
<b>Storage instructions</b>	Shipped at 4°C. Store at +4°C short term (1-2 weeks). Upon delivery aliquot. Store at -20°C long term. Avoid freeze / thaw cycle.
<b>Storage buffer</b>	pH: 7.4 Preservative: 0.05% Sodium azide

	Constituents: 49% PBS, 50% Glycerol (glycerin, glycerine)
<b>Purity</b>	Immunogen affinity purified
<b>Clonality</b>	Polyclonal
<b>Isotype</b>	IgG

## Applications

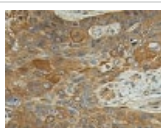
**The Abpromise guarantee** Our **Abpromise guarantee** covers the use of ab198712 in the following tested applications. The application notes include recommended starting dilutions; optimal dilutions/concentrations should be determined by the end user.

Application	Abreviews	Notes
IHC-P	★★★★★ (2)	1/50 - 1/200.
WB		1/500 - 1/2000. Predicted molecular weight: 41 kDa.

## Target

<b>Function</b>	Creates a soluble precursor oligosaccharide FuC-alpha ((1,2)Galbeta-) called the H antigen which is an essential substrate for the final step in the soluble A and B antigen synthesis pathway. H and Se enzymes fucosylate the same acceptor substrates but exhibit different Km values.
<b>Pathway</b>	Protein modification; protein glycosylation.
<b>Sequence similarities</b>	Belongs to the glycosyltransferase 11 family.
<b>Cellular localization</b>	Golgi apparatus > Golgi stack membrane. Membrane-bound form in trans cisternae of Golgi.

## Images



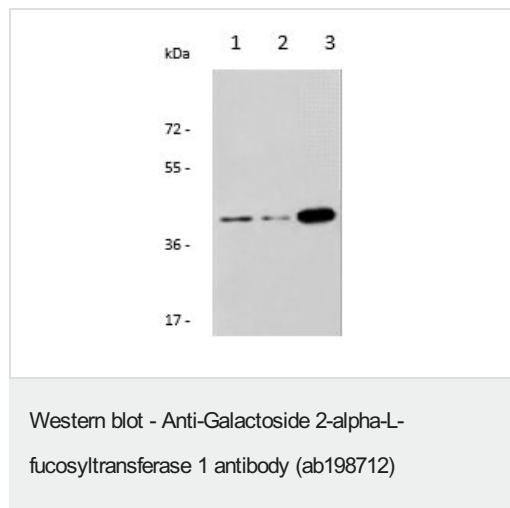
Immunohistochemical analysis of paraffin-embedded Human esophagus cancer tissue using ab 198712 at dilution 1/35.

Immunohistochemistry (Formalin/PFA-fixed paraffin-embedded sections) - Anti-Galactoside 2-alpha-L-fucosyltransferase 1 antibody (ab198712)



Immunohistochemical analysis of paraffin-embedded Human cervical cancer tissue using ab 198712 at dilution 1/35.

Immunohistochemistry (Formalin/PFA-fixed paraffin-embedded sections) - Anti-Galactoside 2-alpha-L-fucosyltransferase 1 antibody (ab198712)



**All lanes :** Anti-Galactoside 2-alpha-L-fucosyltransferase 1 antibody (ab198712) at 1/800 dilution

**Lane 1 :** Human cerebella tissue

**Lane 2 :** Human cerebrum tissue

**Lane 3 :** Raji cell lysates

Lysates/proteins at 40 µg per lane.

### Secondary

**All lanes :** Goat anti rabbit IgG at 1/5000 dilution

**Predicted band size:** 41 kDa

**Exposure time:** 1 minute

Gel: 8%SDS-PAGE

**Please note:** All products are "FOR RESEARCH USE ONLY. NOT FOR USE IN DIAGNOSTIC PROCEDURES"

### Our Abpromise to you: Quality guaranteed and expert technical support

- Replacement or refund for products not performing as stated on the datasheet
- Valid for 12 months from date of delivery
- Response to your inquiry within 24 hours
- We provide support in Chinese, English, French, German, Japanese and Spanish
- Extensive multi-media technical resources to help you
- We investigate all quality concerns to ensure our products perform to the highest standards

If the product does not perform as described on this datasheet, we will offer a refund or replacement. For full details of the Abpromise, please visit <https://www.abcam.com/abpromise> or contact our technical team.

### Terms and conditions

- Guarantee only valid for products bought direct from Abcam or one of our authorized distributors