


Product datasheet

Anti-Galectin 3 antibody [EPR2774] ab76466

KO VALIDATED Recombinant RabMAb

★★★★★ 1 Abreviews 4 References 5 Images

Overview

Product name	Anti-Galectin 3 antibody [EPR2774]
Description	Rabbit monoclonal [EPR2774] to Galectin 3
Host species	Rabbit
Tested applications	Suitable for: WB, ICC/IF, Flow Cyt (Intra) Unsuitable for: IHC-P or IP
Species reactivity	Reacts with: Human Predicted to work with: Rat 
Immunogen	Synthetic peptide within Human Galectin 3 aa 1-100. The exact sequence is proprietary.
Positive control	WB: HeLa, SW480, A431 and MCF7 cell lysates ICC/IF: HeLa cells.
General notes	<p>This product is a recombinant monoclonal antibody, which offers several advantages including:</p> <ul style="list-style-type: none"> - High batch-to-batch consistency and reproducibility - Improved sensitivity and specificity - Long-term security of supply - Animal-free production <p>For more information see here.</p> <p>Our RabMAb[®] technology is a patented hybridoma-based technology for making rabbit monoclonal antibodies. For details on our patents, please refer to RabMAb[®] patents.</p> <p>Mouse: We have preliminary internal testing data to indicate this antibody may not react with this species. Please contact us for more information.</p>

Properties

Form	Liquid
Storage instructions	Shipped at 4°C. Upon delivery aliquot and store at -20°C. Avoid repeated freeze / thaw cycles.
Storage buffer	pH: 7.20 Preservative: 0.01% Sodium azide Constituents: 9% PBS, 40% Glycerol (glycerin, glycerine), 0.05% BSA, 50% Tissue culture supernatant
Purity	Protein A purified

Clonality	Monoclonal
Clone number	EPR2774
Isotype	IgG

Applications

The Abpromise guarantee Our **Abpromise guarantee** covers the use of ab76466 in the following tested applications. The application notes include recommended starting dilutions; optimal dilutions/concentrations should be determined by the end user.

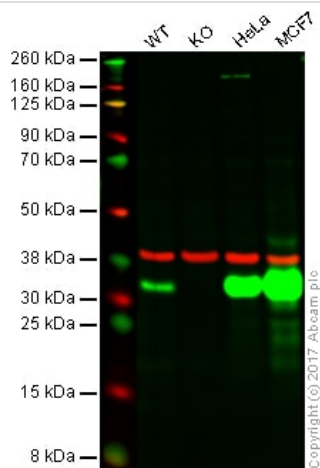
Application	Abreviews	Notes
WB	★★★★★ (1)	1/2000 - 1/10000. Predicted molecular weight: 26 kDa.
ICC/IF		1/100 - 1/250.
Flow Cyt (Intra)		1/30 - 1/100. ab172730 - Rabbit monoclonal IgG, is suitable for use as an isotype control with this antibody.

Application notes Is unsuitable for IHC-P or IP.

Target

Function	Galactose-specific lectin which binds IgE. May mediate with the alpha-3, beta-1 integrin the stimulation by CSPG4 of endothelial cells migration. Together with DMBT1, required for terminal differentiation of columnar epithelial cells during early embryogenesis.
Tissue specificity	A major expression is found in the colonic epithelium. It is also abundant in the activated macrophages.
Sequence similarities	Contains 1 galectin domain.
Cellular localization	Nucleus. Cytoplasmic in adenomas and carcinomas. May be secreted by a non-classical secretory pathway and associate with the cell surface.

Images



Western blot - Anti-Galectin 3 antibody [EPR2774] (ab76466)

Lane 1: Wild type HAP1 whole cell lysate (20 µg)

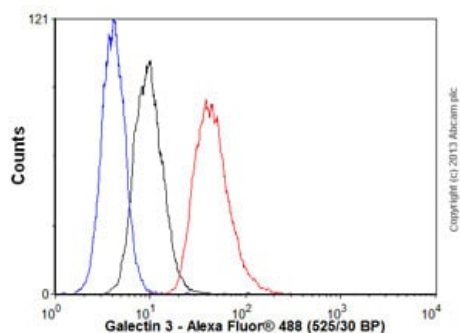
Lane 2: Galectin 3 (KO) knockout HAP1 whole cell lysate (20 µg)

Lane 3: HeLa whole cell lysate (20 µg)

Lane 4: MCF7 whole cell lysate (20 µg)

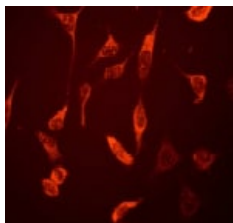
Lanes 1 - 4: Merged signal (red and green). Green - ab76466 observed at 35 kDa. Red - loading control, **ab8245**, observed at 37 kDa.

ab76466 was shown to specifically react with Galectin 3 (KO) when Galectin 3 (KO) knockout samples were used. Wild-type and Galectin 3 (KO) knockout samples were subjected to SDS-PAGE. Ab76466 and **ab8245** (Mouse anti GAPDH loading control) were incubated overnight at 4°C at 2000 dilution and 1/10000 dilution respectively. Blots were developed with Goat anti-Rabbit IgG H&L (IRDye® 800CW) preabsorbed **ab216773** and Goat anti-Mouse IgG H&L (IRDye® 680RD) preabsorbed **ab216776** secondary antibodies at 1/20000 dilution for 1 hour at room temperature before imaging.



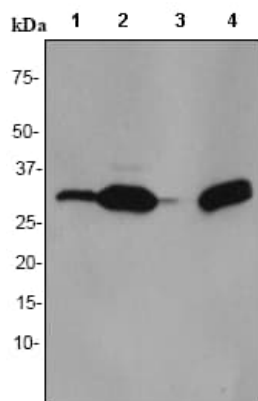
Flow Cytometry (Intracellular) - Anti-Galectin 3 antibody [EPR2774] (ab76466)

Overlay histogram showing THP1 cells stained with ab76466 (red line). The cells were fixed with 80% methanol (5 min) and then permeabilized with 0.1% PBS-Tween for 20 min. The cells were then incubated in 1x PBS / 10% human serum / 0.3M glycine to block non-specific protein-protein interactions followed by the antibody (ab76466, 1/100 dilution) for 30 min at 22°C. The secondary antibody used was Alexa Fluor® 488 goat anti-rabbit IgG (H&L) (**ab150077**) at 1/2000 dilution for 30 min at 22°C. Isotype control antibody (black line) was rabbit IgG (monoclonal) (1 µg/1x10⁶ cells) used under the same conditions. Unlabelled sample (blue line) was also used as a control. Acquisition of >5,000 events were collected using a 20mW Argon ion laser (488nm) and 525/30 bandpass filter.



Immunocytochemistry/ Immunofluorescence - Anti-Galectin 3 antibody [EPR2774] (ab76466)

ab76466, at a 1/100 dilution, staining Galectin 3 in HeLa cells by Immunofluorescence.



Western blot - Anti-Galectin 3 antibody [EPR2774] (ab76466)

All lanes : Anti-Galectin 3 antibody [EPR2774] (ab76466) at 1/5000 dilution

Lane 1 : HeLa cell lysate

Lane 2 : SW480 cell lysate

Lane 3 : A431 cell lysate

Lane 4 : MCF7 cell lysate

Lysates/proteins at 10 µg per lane.

Secondary

All lanes : goat anti-rabbit HRP at 1/2000 dilution

Predicted band size: 26 kDa

Observed band size: 30 kDa

Why choose a recombinant antibody?



Research with confidence
Consistent and reproducible results



Long-term and scalable supply
Recombinant technology



Success from the first experiment
Confirmed specificity



Ethical standards compliant
Animal-free production

Anti-Galectin 3 antibody [EPR2774] (ab76466)

Please note: All products are "FOR RESEARCH USE ONLY. NOT FOR USE IN DIAGNOSTIC PROCEDURES"

Our Abpromise to you: Quality guaranteed and expert technical support

- Replacement or refund for products not performing as stated on the datasheet
- Valid for 12 months from date of delivery
- Response to your inquiry within 24 hours
- We provide support in Chinese, English, French, German, Japanese and Spanish
- Extensive multi-media technical resources to help you
- We investigate all quality concerns to ensure our products perform to the highest standards

If the product does not perform as described on this datasheet, we will offer a refund or replacement. For full details of the Abpromise, please visit <https://www.abcam.com/abpromise> or contact our technical team.

Terms and conditions

- Guarantee only valid for products bought direct from Abcam or one of our authorized distributors