

## Product datasheet

### Anti-galectin 9/Gal-9 antibody ab69630

★★★★☆ [4 Abreviews](#) [28 References](#) [3 Images](#)

#### Overview

<b>Product name</b>	Anti-galectin 9/Gal-9 antibody
<b>Description</b>	Rabbit polyclonal to galectin 9/Gal-9
<b>Host species</b>	Rabbit
<b>Tested applications</b>	<b>Suitable for:</b> ELISA, IHC-P, WB, ICC/IF
<b>Species reactivity</b>	<b>Reacts with:</b> Mouse, Rat, Human
<b>Immunogen</b>	Synthetic peptide corresponding to Human galectin 9/Gal-9 aa 51-100 (internal sequence). Database link: <a href="#">O00182</a>
<b>General notes</b>	<p>The Life Science industry has been in the grips of a reproducibility crisis for a number of years. Abcam is leading the way in addressing this with our range of recombinant monoclonal antibodies and knockout edited cell lines for gold-standard validation. Please check that this product meets your needs before purchasing.</p> <p>If you have any questions, special requirements or concerns, please send us an inquiry and/or contact our Support team ahead of purchase. Recommended alternatives for this product can be found below, along with publications, customer reviews and Q&amp;As</p>

#### Properties

<b>Form</b>	Liquid
<b>Storage instructions</b>	Shipped at 4°C. Store at +4°C short term (1-2 weeks). Upon delivery aliquot. Store at -20°C long term. Avoid freeze / thaw cycle.
<b>Storage buffer</b>	pH: 7 Preservative: 0.02% Sodium azide Constituents: 50% Glycerol, 0.87% Sodium chloride, PBS  without Mg <sup>2+</sup> and Ca <sup>2+</sup>
<b>Purity</b>	Protein A purified
<b>Purification notes</b>	The antibody was affinity-purified from rabbit antiserum by affinity-chromatography using epitope-specific immunogen.
<b>Clonality</b>	Polyclonal
<b>Isotype</b>	IgG

## Applications

### The Abpromise guarantee

Our **Abpromise guarantee** covers the use of ab69630 in the following tested applications.

The application notes include recommended starting dilutions; optimal dilutions/concentrations should be determined by the end user.

Application	Abreviews	Notes
ELISA		Use at an assay dependent concentration.
IHC-P	★ ★ ★ ★ ★ (1)	Use at an assay dependent concentration.
WB	★ ★ ★ ★ ★ (1)	1/500 - 1/1000. Detects a band of approximately 40 kDa (predicted molecular weight: 40 kDa).
ICC/IF	★ ★ ★ ★ ★ (1)	1/500 - 1/1000.

## Target

### Function

Binds galactosides. Has high affinity for the Forssman pentasaccharide. May play a role in thymocyte-epithelial interactions relevant to the biology of the thymus. Inhibits cell proliferation. It is a ligand for HAVCR2/TIM3. Induces T-helper type 1 lymphocyte (Th1) death. Isoform Short acts as an eosinophil chemoattractant.

### Tissue specificity

Peripheral blood leukocytes and lymphatic tissues. Overexpressed in Hodgkin disease tissue.

### Sequence similarities

Contains 2 galectin domains.

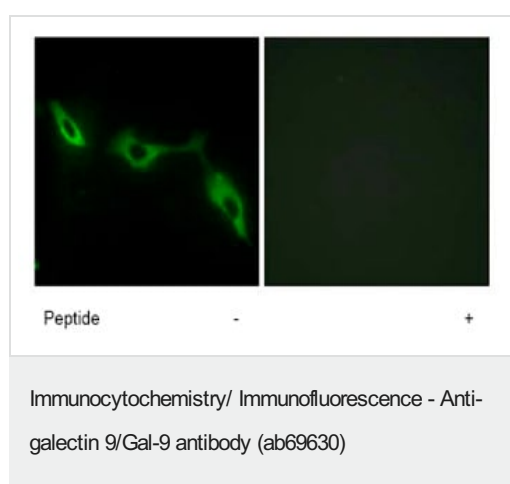
### Domain

Contains two homologous but distinct carbohydrate-binding domains.

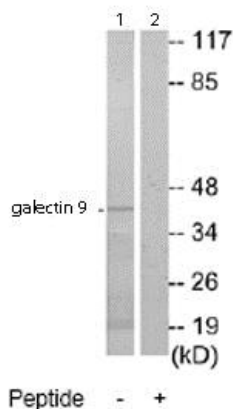
### Cellular localization

Cytoplasm. Secreted. May also be secreted by a non-classical secretory pathway.

## Images



Immunofluorescence analysis of NIH/3T3 cells using ab69630 at 1/500 dilution, with (right panel) or without (left panel) the immunising peptide.



Western blot - Anti-galectin 9/Gal-9 antibody (ab69630)

**All lanes** : Anti-galectin 9/Gal-9 antibody (ab69630) at 1/500 dilution

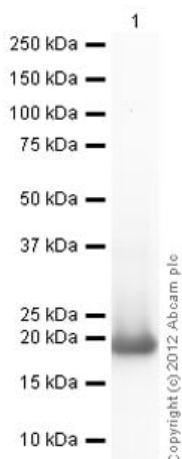
**Lane 1** : Extracts from HepG2 cells

**Lane 2** : Extracts from HepG2 cells with immunising peptide at 5 µg

Lysates/proteins at 5 µg per lane.

**Predicted band size:** 40 kDa

**Observed band size:** 40 kDa



Western blot - Anti-galectin 9/Gal-9 antibody (ab69630)

Ab69630 recognizes the partial tagged recombinant Human galectin 9/Gal-9 protein (galectin 1 domain only) which has an expected molecular weight of 19 kDa.

**Please note:** All products are "FOR RESEARCH USE ONLY. NOT FOR USE IN DIAGNOSTIC PROCEDURES"

## Our Abpromise to you: Quality guaranteed and expert technical support

- Replacement or refund for products not performing as stated on the datasheet
- Valid for 12 months from date of delivery
- Response to your inquiry within 24 hours
- We provide support in Chinese, English, French, German, Japanese and Spanish
- Extensive multi-media technical resources to help you

- We investigate all quality concerns to ensure our products perform to the highest standards

If the product does not perform as described on this datasheet, we will offer a refund or replacement. For full details of the Abpromise, please visit <https://www.abcam.com/abpromise> or contact our technical team.

### **Terms and conditions**

---

- Guarantee only valid for products bought direct from Abcam or one of our authorized distributors