


Product datasheet

Anti-GALR1 antibody - C-terminal ab150486

[1 References](#) [1 Image](#)

Overview

| | |
|----------------------------|---|
| Product name | Anti-GALR1 antibody - C-terminal |
| Description | Rabbit polyclonal to GALR1 - C-terminal |
| Host species | Rabbit |
| Specificity | BLAST analysis of the peptide immunogen showed no homology with other Human proteins. |
| Tested applications | Suitable for: IHC-P |
| Species reactivity | Reacts with: Human Predicted to work with: Chimpanzee, Monkey, Gorilla, Orangutan  |
| Immunogen | A 20 amino acid synthetic peptide corresponding to the C-terminus of Human GALR1 (NP_001471.1). |
| Positive control | Human brain tissue |
| General notes | <p>The Life Science industry has been in the grips of a reproducibility crisis for a number of years. Abcam is leading the way in addressing this with our range of recombinant monoclonal antibodies and knockout edited cell lines for gold-standard validation. Please check that this product meets your needs before purchasing.</p> <p>If you have any questions, special requirements or concerns, please send us an inquiry and/or contact our Support team ahead of purchase. Recommended alternatives for this product can be found below, along with publications, customer reviews and Q&As</p> |

Properties

| | |
|-----------------------------|--|
| Form | Liquid |
| Storage instructions | Shipped at 4°C. |
| Storage buffer | pH: 7.4 Preservative: 0.1% Sodium azide Constituent: 99% PBS |
| Purity | Immunogen affinity purified |
| Clonality | Polyclonal |
| Isotype | IgG |

Applications

Applications

The Abpromise guarantee Our **Abpromise guarantee** covers the use of ab150486 in the following tested applications. The application notes include recommended starting dilutions; optimal dilutions/concentrations should be determined by the end user.

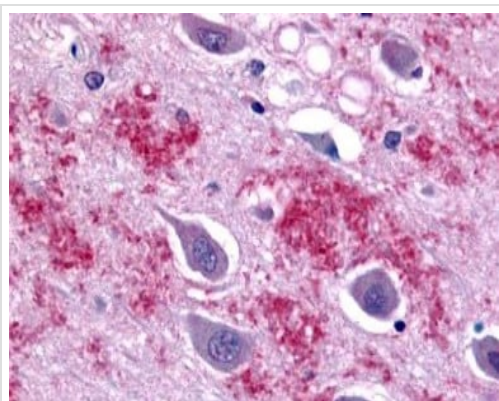
| Application | Abreviews | Notes |
|-------------|-----------|---|
| IHC-P | | Use a concentration of 7 µg/ml. Perform heat mediated antigen retrieval before commencing with IHC staining protocol. |

Target

Relevance The activity of this receptor for the hormone galanin is mediated by G proteins of the Gi/Go family that inhibit adenylate cyclase activity. GALR1 is widely expressed in the brain and spinal cord, as well as in peripheral sites such as the colon, small intestine and heart. ESTs have been isolated from nerve and fetal lung/testis/B cell libraries.

Cellular localization Cell membrane; Multi-pass membrane protein.

Images



Immunohistochemical analysis of paraffin embedded Human brain tissue labelling GALR1 with ab150486 antibody at a concentration of 7 µg/ml.

Immunohistochemistry (Formalin/PFA-fixed paraffin-embedded sections) - Anti-GALR1 antibody - C-terminal (ab150486)

Please note: All products are "FOR RESEARCH USE ONLY. NOT FOR USE IN DIAGNOSTIC PROCEDURES"

Our Abpromise to you: Quality guaranteed and expert technical support

- Replacement or refund for products not performing as stated on the datasheet
- Valid for 12 months from date of delivery
- Response to your inquiry within 24 hours
- We provide support in Chinese, English, French, German, Japanese and Spanish
- Extensive multi-media technical resources to help you
- We investigate all quality concerns to ensure our products perform to the highest standards

If the product does not perform as described on this datasheet, we will offer a refund or replacement. For full details of the Abpromise, please visit <https://www.abcam.com/abpromise> or contact our technical team.

Terms and conditions

- Guarantee only valid for products bought direct from Abcam or one of our authorized distributors