


Anti-gamma Adducin antibody ab230354

2 Images

Overview

Product name	Anti-gamma Adducin antibody
Description	Rabbit polyclonal to gamma Adducin
Host species	Rabbit
Tested applications	Suitable for: WB, IHC-P
Species reactivity	Reacts with: Human Predicted to work with: Mouse, Rat 
Immunogen	Synthetic peptide within Human gamma Adducin aa 431-480. The exact sequence is proprietary. Database link: Q9UEY8
Positive control	IHC-P: Human kidney tissue. WB: HepG2 and HEK-293 cell extracts.
General notes	<p>The Life Science industry has been in the grips of a reproducibility crisis for a number of years. Abcam is leading the way in addressing this with our range of recombinant monoclonal antibodies and knockout edited cell lines for gold-standard validation. Please check that this product meets your needs before purchasing.</p> <p>If you have any questions, special requirements or concerns, please send us an inquiry and/or contact our Support team ahead of purchase. Recommended alternatives for this product can be found below, along with publications, customer reviews and Q&As</p>

Properties

Form	Liquid
Storage instructions	Shipped at 4°C. Store at +4°C short term (1-2 weeks). Upon delivery aliquot. Store at -20°C long term. Avoid freeze / thaw cycle.
Storage buffer	pH: 7.40 Preservative: 0.02% Sodium azide Constituents: PBS, 0.87% Sodium chloride, 50% Glycerol (glycerin, glycerine)
Purity	Immunogen affinity purified
Clonality	Polyclonal
Isotype	IgG

Applications

The Abpromise guarantee

Our **Abpromise guarantee** covers the use of ab230354 in the following tested applications.

The application notes include recommended starting dilutions; optimal dilutions/concentrations should be determined by the end user.

Application	Abreviews	Notes
WB		1/500 - 1/1000. Predicted molecular weight: 79, 75 kDa.
IHC-P		1/100. Perform heat mediated antigen retrieval before commencing with IHC staining protocol.

Target

Function

Membrane-cytoskeleton-associated protein that promotes the assembly of the spectrin-actin network. Binds to calmodulin.

Tissue specificity

Heart only expresses isoform 1.

Sequence similarities

Belongs to the aldolase class II family. Adducin subfamily.

Domain

Comprised of three regions: a N-terminal protease-resistant globular head region, a short connecting subdomain, and a protease-sensitive tail region.

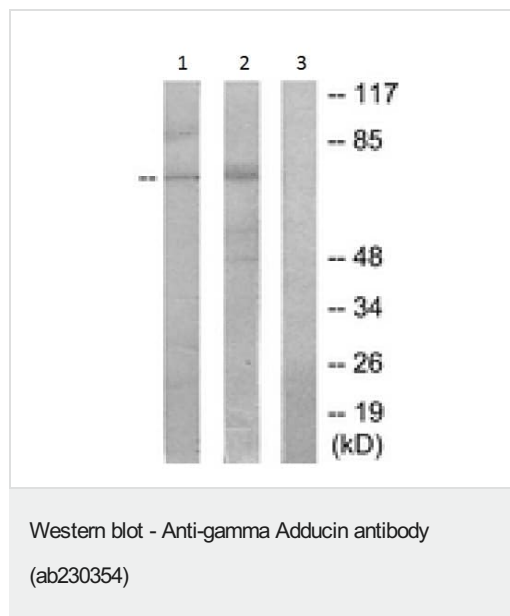
Post-translational modifications

Sumoylated.

Cellular localization

Cytoplasm > cytoskeleton. Cell membrane.

Images



All lanes : Anti-gamma Adducin antibody (ab230354) at 1/500 dilution

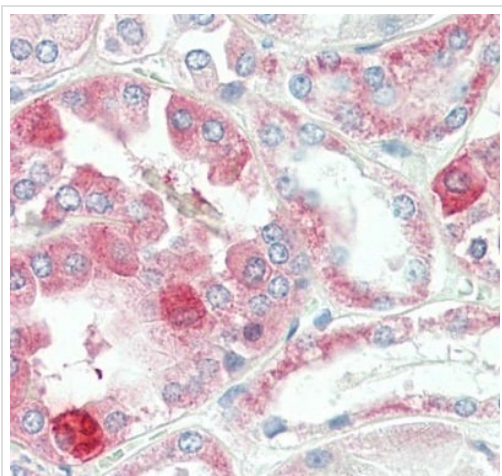
Lane 1 : HepG2 (Human liver hepatocellular carcinoma cell line) cell extracts

Lane 2 : HEK-293 (Human epithelial cell line from embryonic kidney) cell extracts

Lane 3 : HEK-293 (Human epithelial cell line from embryonic kidney) cell extracts with immunizing peptide

Developed using the ECL technique.

Predicted band size: 79, 75 kDa



Formalin-fixed, paraffin-embedded human kidney tissue stained for gamma Adducin with ab230354 at a 1:100 dilution in immunohistochemical analysis.

Immunohistochemistry (Formalin/PFA-fixed paraffin-embedded sections) - Anti-gamma Adducin antibody (ab230354)

Please note: All products are "FOR RESEARCH USE ONLY. NOT FOR USE IN DIAGNOSTIC PROCEDURES"

Our Abpromise to you: Quality guaranteed and expert technical support

- Replacement or refund for products not performing as stated on the datasheet
- Valid for 12 months from date of delivery
- Response to your inquiry within 24 hours
- We provide support in Chinese, English, French, German, Japanese and Spanish
- Extensive multi-media technical resources to help you
- We investigate all quality concerns to ensure our products perform to the highest standards

If the product does not perform as described on this datasheet, we will offer a refund or replacement. For full details of the Abpromise, please visit <https://www.abcam.com/abpromise> or contact our technical team.

Terms and conditions

- Guarantee only valid for products bought direct from Abcam or one of our authorized distributors