

## Product datasheet

# Anti-gamma Tubulin antibody [4D11] - C-terminal ab173831

[1 References](#) [4 Images](#)

### Overview

---

<b>Product name</b>	Anti-gamma Tubulin antibody [4D11] - C-terminal
<b>Description</b>	Mouse monoclonal [4D11] to gamma Tubulin - C-terminal
<b>Host species</b>	Mouse
<b>Tested applications</b>	<b>Suitable for:</b> WB, ICC/IF, IHC-P
<b>Species reactivity</b>	<b>Reacts with:</b> Mouse, Human, African green monkey
<b>Immunogen</b>	Recombinant fragment within Human gamma Tubulin aa 437-451 (C terminal). The exact sequence is proprietary. Sequence: AATRPDYISWGTQEQ  Database link: <a href="#">P23258</a> <a href="#">Run BLAST with</a> <a href="#">Run BLAST with</a>
<b>Positive control</b>	Human breast carcinoma and colon tissues; HeLa and U2OS cells; HeLa, HepG2, U2OS and K562 cell lysates; mouse 3T3L1 and spleen lysates; monkey COS7 cell lysate.
<b>General notes</b>	<p>The Life Science industry has been in the grips of a reproducibility crisis for a number of years. Abcam is leading the way in addressing this with our range of recombinant monoclonal antibodies and knockout edited cell lines for gold-standard validation. Please check that this product meets your needs before purchasing.</p> <p>If you have any questions, special requirements or concerns, please send us an inquiry and/or contact our Support team ahead of purchase. Recommended alternatives for this product can be found below, along with publications, customer reviews and Q&amp;As</p>

### Properties

---

<b>Form</b>	Liquid
<b>Storage instructions</b>	Shipped at 4°C. Store at +4°C short term (1-2 weeks). Upon delivery aliquot. Store at -20°C. Avoid freeze / thaw cycle.
<b>Storage buffer</b>	Preservative: 0.05% Sodium azide Constituents: 0.1% BSA, 99% PBS
<b>Purity</b>	Protein G purified

<b>Clonality</b>	Monoclonal
<b>Clone number</b>	4D11
<b>Isotype</b>	IgG2b

## Applications

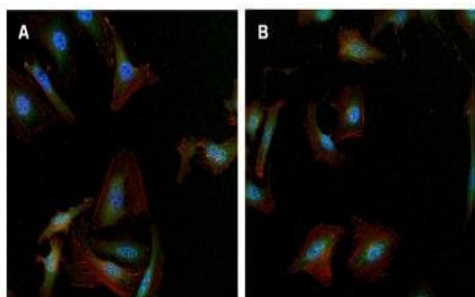
**The Abpromise guarantee** Our **Abpromise guarantee** covers the use of ab173831 in the following tested applications. The application notes include recommended starting dilutions; optimal dilutions/concentrations should be determined by the end user.

Application	Abreviews	Notes
<b>WB</b>		1/1000. Predicted molecular weight: 51 kDa.
<b>ICC/IF</b>		1/50.
<b>IHC-P</b>		1/20 - 1/200. Perform heat mediated antigen retrieval with citrate buffer pH 6 before commencing with IHC staining protocol.

## Target

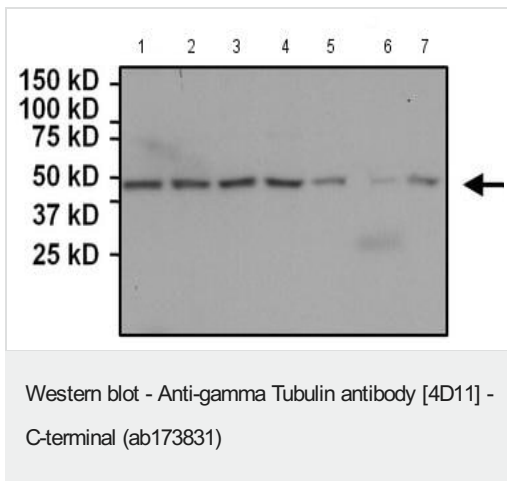
<b>Function</b>	Tubulin is the major constituent of microtubules. Gamma tubulin is found at microtubule organizing centers (MTOC) such as the spindle poles or the centrosome. Pericentriolar matrix component that regulates alpha/beta tubulin minus-end nucleation, centrosome duplication and spindle formation.
<b>Sequence similarities</b>	Belongs to the tubulin family.
<b>Post-translational modifications</b>	Phosphorylation at Ser-131 by BRSK1 regulates centrosome duplication, possibly by mediating relocation of gamma-tubulin and its associated proteins from the cytoplasm to the centrosome.
<b>Cellular localization</b>	Cytoplasm > cytoskeleton > centrosome.

## Images



Immunofluorescence analysis of formalin-fixed, permeabilized A) HeLa cells and B) U2OS, labeling gamma Tubulin (green) using ab173831 at a 1/50 dilution. Cells were washed with PBS and incubated with a DyLight-488 conjugated secondary antibody. F-Actin (red) was stained with DyLight 547 Phalloidin and nuclei (blue) were stained with Hoechst 33342 dye.

Immunocytochemistry/ Immunofluorescence - Anti-gamma Tubulin antibody [4D11] - C-terminal (ab173831)



**All lanes** : Anti-gamma Tubulin antibody [4D11] - C-terminal (ab173831) at 1/1000 dilution

**Lane 1** : HeLa cell lysate

**Lane 2** : HepG2 cell lysate

**Lane 3** : U2OS cell lysate

**Lane 4** : K562 cell lysate

**Lane 5** : mouse 3T3L1 cell lysate

**Lane 6** : mouse spleen lysate

**Lane 7** : monkey COS7 cell lysate

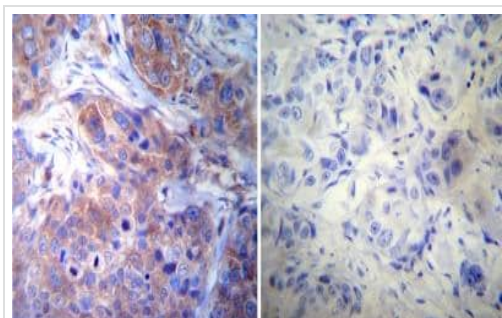
Lysates/proteins at 50 µg per lane.

### Secondary

**All lanes** : goat anti-mouse-HRP at 1/20000 dilution

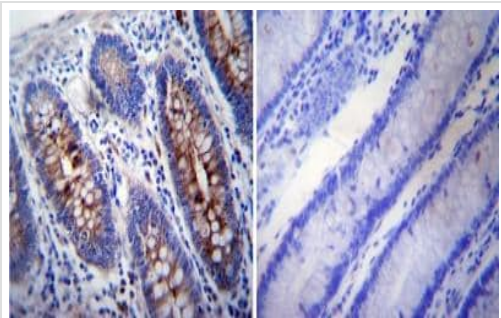
Developed using the ECL technique.

**Predicted band size:** 51 kDa



Immunohistochemistry (Formalin/PFA-fixed paraffin-embedded sections) - Anti-gamma Tubulin antibody [4D11] - C-terminal (ab173831)

Immunohistochemical analysis of Human breast carcinoma tissue, labeling gamma Tubulin with ab173831 at a 1/20 dilution (left panel) or without primary antibody (right panel). To expose target proteins, heat induced antigen retrieval was performed using 10mM sodium citrate (pH6.0) buffer, microwaved for 8-15 minutes. Detection was performed using a biotin-conjugated secondary antibody and SA-HRP, followed by colorimetric detection using DAB. Tissues were counterstained with hematoxylin and prepped for mounting.



Immunohistochemistry (Formalin/PFA-fixed paraffin-embedded sections) - Anti-gamma Tubulin antibody [4D11] - C-terminal (ab173831)

Immunohistochemical analysis of Human colon tissue, labeling gamma Tubulin with ab173831 at a 1/200 dilution (left panel) or without primary antibody (right panel). To expose target proteins, heat induced antigen retrieval was performed using 10mM sodium citrate (pH6.0) buffer, microwaved for 8-15 minutes. Detection was performed using a biotin-conjugated secondary antibody and SA-HRP, followed by colorimetric detection using DAB. Tissues were counterstained with hematoxylin and prepped for mounting.

**Please note:** All products are "FOR RESEARCH USE ONLY. NOT FOR USE IN DIAGNOSTIC PROCEDURES"

### **Our Abpromise to you: Quality guaranteed and expert technical support**

---

- Replacement or refund for products not performing as stated on the datasheet
- Valid for 12 months from date of delivery
- Response to your inquiry within 24 hours
- We provide support in Chinese, English, French, German, Japanese and Spanish
- Extensive multi-media technical resources to help you
- We investigate all quality concerns to ensure our products perform to the highest standards

If the product does not perform as described on this datasheet, we will offer a refund or replacement. For full details of the Abpromise, please visit <https://www.abcam.com/abpromise> or contact our technical team.

### **Terms and conditions**

---

- Guarantee only valid for products bought direct from Abcam or one of our authorized distributors